

## Anti-CLOCK Monoclonal Antibody

Catalog Number: M00064

### About CLOCK

Phosphoinositide-3-kinase (PI3K) that phosphorylates PtdIns (Phosphatidylinositol), PtdIns4P (Phosphatidylinositol 4-phosphate) and PtdIns (4,5) P2 (Phosphatidylinositol 4,5-bisphosphate) to generate phosphatidylinositol 3,4,5-trisphosphate (PIP3) . PIP3 plays a key role by recruiting PH domain-containing proteins to the membrane, including AKT1 and PDK1, activating signaling cascades involved in cell growth, survival, proliferation, motility and morphology. Participates in cellular signaling in response to various growth factors.

### Overview

Product Name	Anti-CLOCK Monoclonal Antibody
Reactive Species	Human, Mouse, Rat
Description	Boster Bio Anti-CLOCK Monoclonal Antibody catalog # M00064. Tested in WB, IHC, ICC/IF, Flow Cytometry applications. This antibody reacts with Human, Mouse, Rat.
Application	Flow Cytometry, IF, IHC, ICC, WB
Clonality	Monoclonal ACCH-3
Formulation	Rabbit IgG in phosphate buffered saline, pH 7.4, 150mM NaCl, 0.02% sodium azide and 50% glycerol, 0.4-0.5mg/ml BSA.
Storage Instructions	Store at -20°C for one year. For short term storage and frequent use, store at 4°C for up to one month. Avoid repeated freeze-thaw cycles.
Host	Rabbit
Uniprot ID	O15516

### Technical Details

Immunogen	A synthesized peptide derived from human CLOCK
Isotype	Rabbit IgG
Form	Liquid
Concentration	Actual concentration vary by lot. Use suggested dilution ratio to decide dilution procedure.
Purification	Affinity-chromatography
Suggested Dilutions	Dilute the sample so that the expected range of concentrations fall within the detection range of this kit. If the expected range of concentration is unknown, a pilot test should be conducted to decide the optimal dilution ratio for your samples. Some PubMed article(s) citing the expression level of this target are as follows:

Boster Bio's internal QC testing used:

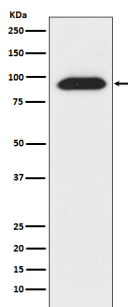
WB 1:1000-1:5000

IHC 1:50-1:200

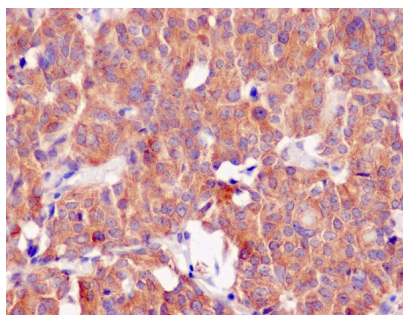
ICC/IF 1:50-1:200

FC 1:50

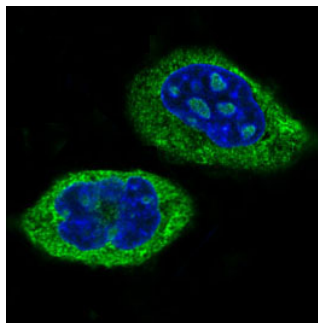
## Anti-CLOCK Monoclonal Antibody (M00064) Images



Western blot analysis of CLOCK expression in 293T cell lysate.



Immunohistochemical analysis of paraffin-embedded human thyroid carcinoma, using CLOCK Antibody.



Immunofluorescent analysis of HeLa cells, using CLOCK Antibody .

### Submit a product review to Biocompare.com

Submit a review of this product to Biocompare.com to receive a \$20 Amazon.com giftcard! Your reviews help your fellow scientists make the right decisions. Thank you for your contribution.



Anti-CLOCK Monoclonal Antibody