

Anti-TNFRSF5 / CD40 Reference Antibody (bleseelumab)

Catalog Number: M00068-5

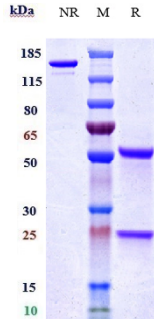
Overview

Product Name	Anti-TNFRSF5 / CD40 Reference Antibody (bleseelumab)
Reactive Species	Cynomolgus monkey, Human
Description	Boster Bio Anti-TNFRSF5 / CD40 Reference Antibody (bleseelumab) (Catalog # M00068-5). Tested in Flow Cytometry, ELISA, FTA. This antibody reacts with Cynomolgus monkey, Human. Endotoxin: < 0.112EU/ug,determined by LAL method. Expression system: CHO Cell
Application	ELISA, Flow Cytometry, Functional Assay, Kinetics
Clonality	Monoclonal
Formulation	Purified monoclonal antibody supplied in PBS, pH6.0, without preservative.This antibody is purified through a protein A column.
Storage Instructions	Maintain refrigerated at 2-8°C for up to 2 weeks. For long-term storage, aliquot and store at -20°C to avoid repeated freeze-thaw cycles.
Uniprot ID	P25942

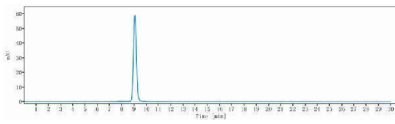
Technical Details

Isotype	IgG4PE
Form	Liquid

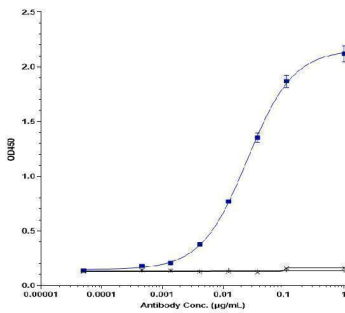
Anti-TNFRSF5 / CD40 Reference Antibody (bleseelumab) (M00068-5) Images



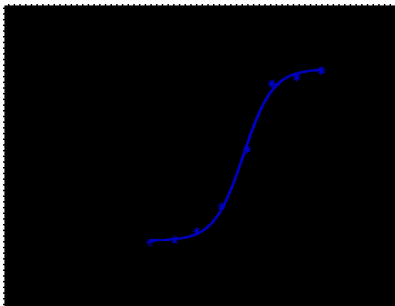
Anti-TNFRSF5/CD40 Reference Antibody (bleseelumab) on SDS-PAGE under reducing (R) condition. The gel was stained with Coomassie Blue. The purity of the protein is greater than 95%



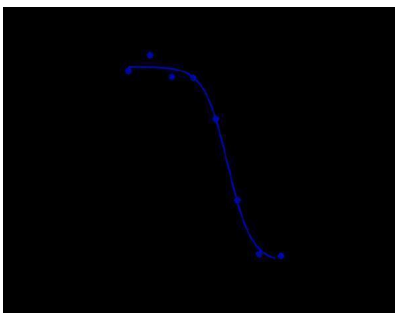
The purity of Anti-TNFRSF5/CD40 Reference Antibody (bleseelumab) is more than 99.21%



Immobilized human TNFRSF5/CD40 His at 2 µg/mL can bind Anti-TNFRSF5/CD40 Reference Antibody (bleseelumab)



Human CD40 CHO cells were stained with Anti-TNFRSF5/CD40 Reference Antibody (bleseelumab) and negative control protein respectively



Anti-TNFRSF5/CD40 Reference Antibody (bleseelumab) FACS Blocking was evaluated using CCRF-CEM. The IC50 was approximately 1.359 µg/mL.

Submit a product review to [Biocompare.com](https://www.biocompare.com)



Submit a review of this product to Biocompare.com to receive a \$20 Amazon.com giftcard! Your reviews help your fellow scientists make the right decisions. Thank you for your contribution.

Anti-TNFRSF5 / CD40 Reference Antibody (bleseelumab)

For Research Use Only. Not for use in diagnostic procedures.