

Anti-IGF1R / CD221 Reference Antibody (lonigutamAb)

Catalog Number: M00070-5

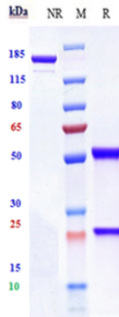
Overview

| | |
|----------------------|---|
| Product Name | Anti-IGF1R / CD221 Reference Antibody (lonigutamAb) |
| Reactive Species | Human |
| Description | Boster Bio Anti-IGF1R / CD221 Reference Antibody (lonigutamAb) (Catalog # M00070-5). Tested in Flow Cytometry, ELISA, FTA. This antibody reacts with Human. Endotoxin: < 0.115EU/ug,determined by LAL method. Expression system: CHO Cell |
| Application | ELISA, Flow Cytometry, Functional Assay, Kinetics |
| Clonality | Monoclonal |
| Formulation | Purified monoclonal antibody supplied in PBS, pH6.0, without preservative.This antibody is purified through a protein A column. |
| Storage Instructions | Maintain refrigerated at 2-8°C for up to 2 weeks. For long-term storage, aliquot and store at -20°C to avoid repeated freeze-thaw cycles. |
| Uniprot ID | P08069 |

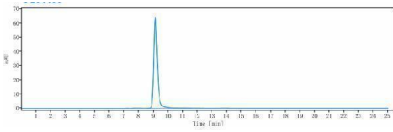
Technical Details

| | |
|---------|--------|
| Isotype | IgG1 |
| Form | Liquid |

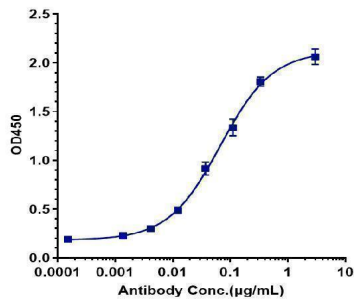
Anti-IGF1R / CD221 Reference Antibody (lonigutamAb) (M00070-5) Images



Anti-IGF1R/CD221 Reference Antibody (lonigutamAb) on SDS-PAGE under reducing (R) condition. The gel was stained with Coomassie Blue. The purity of the protein is greater than 95%



The purity of Anti-IGF1R/CD221 Reference Antibody (lonigutamAb) is more than 100%



Immobilized human IGF1R His at 2 µg/mL can bind Anti-IGF1R/CD221 Reference Antibody (lonigutamAb)

Submit a product review to Biocompare.com

Submit a review of this product to Biocompare.com to receive a \$20 Amazon.com giftcard! Your reviews help your fellow scientists make the right decisions. Thank you for your contribution.



Anti-IGF1R / CD221 Reference Antibody (lonigutamAb)

For Research Use Only. Not for use in diagnostic procedures.