

## Anti-Smad4 Rabbit Monoclonal Antibody

Catalog Number: M00074

### About SMAD4

Phosphoinositide-3-kinase (PI3K) that phosphorylates PtdIns (Phosphatidylinositol), PtdIns4P (Phosphatidylinositol 4-phosphate) and PtdIns (4,5) P2 (Phosphatidylinositol 4,5-bisphosphate) to generate phosphatidylinositol 3,4,5-trisphosphate (PIP3) . PIP3 plays a key role by recruiting PH domain-containing proteins to the membrane, including AKT1 and PDPK1, activating signaling cascades involved in cell growth, survival, proliferation, motility and morphology. Participates in cellular signaling in response to various growth factors.

### Overview

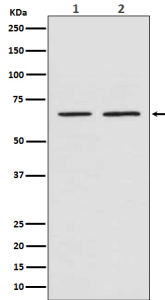
Product Name	Anti-Smad4 Rabbit Monoclonal Antibody
Reactive Species	Human, Mouse, Rat
Description	Boster Bio Anti-Smad4 Rabbit Monoclonal Antibody catalog # M00074. Tested in WB, IHC applications. This antibody reacts with Human, Mouse, Rat.
Application	IHC, WB
Clonality	Monoclonal FH-19
Formulation	Rabbit IgG in phosphate buffered saline, pH 7.4, 150mM NaCl, 0.02% sodium azide and 50% glycerol, 0.4-0.5mg/ml BSA.
Storage Instructions	Store at -20°C for one year. For short term storage and frequent use, store at 4°C for up to one month. Avoid repeated freeze-thaw cycles.
Host	Rabbit
Uniprot ID	Q13485

### Technical Details

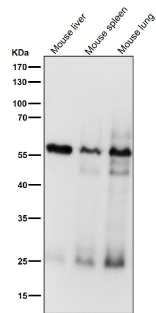
Immunogen	A synthesized peptide derived from human Smad4
Isotype	Rabbit IgG
Form	Liquid
Concentration	Actual concentration vary by lot. Use suggested dilution ratio to decide dilution procedure.
Purification	Affinity-chromatography
Suggested Dilutions	Dilute the sample so that the expected range of concentrations fall within the detection range of this kit. If the expected range of concentration is unknown, a pilot test should be conducted to decide the optimal dilution ratio for your samples. Some PubMed article(s) citing the expression level of this target are as follows:

Boster Bio's internal QC testing used:  
WB 1:500-1:2000  
IHC 1:50-1:200

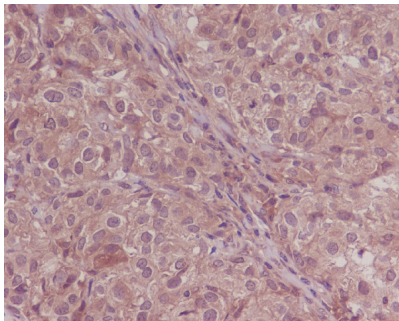
## Anti-Smad4 Rabbit Monoclonal Antibody (M00074) Images



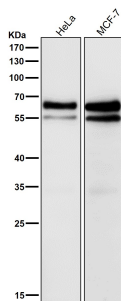
Western blot analysis of SMAD4 expression in (1) SH-SY5Y cell lysate; (2) NIH/3T3 cell lysate.



All lanes use the Antibody at 1:2K dilution for 1 hour at room temperature.



Immunohistochemical analysis of paraffin-embedded human breast cancer, using Smad4 Antibody.



All lanes use the Antibody at 1:2K dilution for 1 hour at room temperature.

## 3 Publications Citing This Product

1. PubMed ID: 25371235, TGF $\beta$ 2 regulates the proliferation of lung adenocarcinoma cells by inhibiting PIK3R3 expression
2. PubMed ID: 19824107, Emodin protects rat liver from CCl<sub>4</sub>-induced fibrogenesis via inhibition of hepatic stellate cells activation
3. PubMed ID: 27019660, Effect of Kuijie Granule on the Expression of TGF- $\beta$ /Smads Signaling Pathway in Patients with Ulcerative Colitis

Visit [bosterbio.com/anti-smad4-rabbit-monoclonal-antibody-m00074-boster.html](https://bosterbio.com/anti-smad4-rabbit-monoclonal-antibody-m00074-boster.html) to see all 3 publications.

## Submit a product review to Biocompare.com

Submit a review of this product to Biocompare.com to receive a \$20 Amazon.com giftcard! Your reviews help your fellow scientists make the right decisions. Thank you for your contribution.



Anti-Smad4 Rabbit Monoclonal Antibody