

## Anti-BRAF Rabbit Monoclonal Antibody, Clone#RM308

Catalog Number: M00075-2

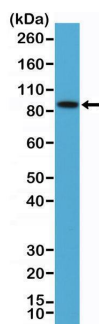
### Overview

Product Name	Anti-BRAF Rabbit Monoclonal Antibody, Clone#RM308
Reactive Species	Human
Description	Boster Bio Anti-BRAF Rabbit Monoclonal Antibody, Clone#RM308 (Catalog # M00075-2). Tested in IHC, WB applications. This antibody reacts with Human.
Application	IHC, WB
Clonality	Monoclonal RM308
Formulation	50% Glycerol/PBS with 1% stabilizing protein and 0.09% sodium azide This antibody is supplied in a stabilized formulation. Compatibility with conjugation reactions depends on the chemistry of the conjugation method used. For conjugation methods that are not compatible with the stabilizing components present in this formulation, a carrier-free antibody format is required.
Storage Instructions	Store at -20°C for one year. Avoid repeated freeze-thaw cycles.
Host	Rabbit
Uniprot ID	P15056

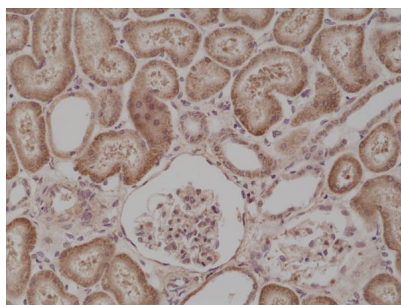
### Technical Details

Immunogen	A peptide corresponding to the residues near N-terminus of human B-raf
Cross Reactivity	This antibody reacts to human serine/threonine-protein kinase B-raf (BRAF). It may also react to mouse B-raf, as predicted by immunogen homology.
Isotype	Rabbit IgG
Form	Liquid
Concentration	0.5-1mg/ml, actual concentration vary by lot. Use suggested dilution ratio to decide dilution procedure.
Purification	Protein A affinity purified from an animal origin-free culture supernatant
Suggested Dilutions	Immunohistochemistry (IHC): 1:200-1:500 dilution WB: 1:100-1:200 dilution.

## Anti-BRAF Rabbit Monoclonal Antibody, Clone#RM308 (M00075-2) Images



Western Blotting result  
Western Blot of K562 cells lysate using anti-B-raf rabbit monoclonal antibody (Clone RM308) at a 1:100 dilution.



IHC result  
Immunohistochemical staining of formalin fixed and paraffin embedded human kidney tissue section using anti-B-raf rabbit monoclonal antibody (Clone RM308) at a 1:500 dilution.

### Submit a product review to Biocompare.com

Submit a review of this product to Biocompare.com to receive a \$20 Amazon.com giftcard! Your reviews help your fellow scientists make the right decisions. Thank you for your contribution.



Anti-BRAF Rabbit Monoclonal Antibody, Clone#RM308

For Research Use Only. Not for use in diagnostic procedures.