

## Anti-Nrf2 NFE2L2 Rabbit Monoclonal Antibody

Catalog Number: M00078

### About NFE2L2

Phosphoinositide-3-kinase (PI3K) that phosphorylates PtdIns (Phosphatidylinositol), PtdIns4P (Phosphatidylinositol 4-phosphate) and PtdIns (4,5) P2 (Phosphatidylinositol 4,5-bisphosphate) to generate phosphatidylinositol 3,4,5-trisphosphate (PIP3) . PIP3 plays a key role by recruiting PH domain-containing proteins to the membrane, including AKT1 and PDK1, activating signaling cascades involved in cell growth, survival, proliferation, motility and morphology. Participates in cellular signaling in response to various growth factors.

### Overview

Product Name	Anti-Nrf2 NFE2L2 Rabbit Monoclonal Antibody
Reactive Species	Human, Mouse
Description	Boster Bio Anti-Nrf2 NFE2L2 Rabbit Monoclonal Antibody catalog # M00078. Tested in WB, IHC, ICC/IF, IP applications. This antibody reacts with Human, Mouse.
Application	IP, IF, IHC, ICC, WB
Clonality	Monoclonal AGH-14
Formulation	Rabbit IgG in phosphate buffered saline, pH 7.4, 150mM NaCl, 0.02% sodium azide and 50% glycerol, 0.4-0.5mg/ml BSA.
Storage Instructions	Store at -20°C for one year. For short term storage and frequent use, store at 4°C for up to one month. Avoid repeated freeze-thaw cycles.
Host	Rabbit
Uniprot ID	Q16236

### Technical Details

Immunogen	A synthesized peptide derived from human Nrf2
Isotype	Rabbit IgG
Form	Liquid
Concentration	Actual concentration vary by lot. Use suggested dilution ratio to decide dilution procedure.
Purification	Affinity-chromatography
Suggested Dilutions	Dilute the sample so that the expected range of concentrations fall within the detection range of this kit. If the expected range of concentration is unknown, a pilot test should be conducted to decide the optimal dilution ratio for your samples. Some PubMed article(s) citing the expression level of this target are as follows:

Boster Bio's internal QC testing used:

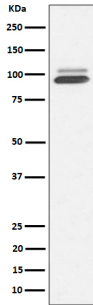
WB 1:500-1:2000

IHC 1:50-1:200

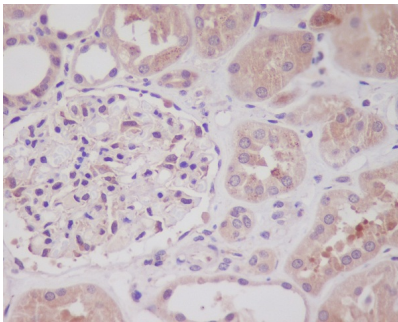
ICC/IF 1:100-1:500

IP 1:50

## Anti-Nrf2 NFE2L2 Rabbit Monoclonal Antibody (M00078) Images



Western blot analysis of Nrf2 expression in 293T cell treated with arsenite.



Immunohistochemical analysis of paraffin-embedded human kidney, using Nrf2 Antibody.



Immunofluorescent analysis of HeLa cells, using Nrf2 Antibody.

## 9 Publications Citing This Product

1. PubMed ID: 31026730, Xin X, Yao D, Zhang K, Han S, Liu D, Wang H, Liu X, Li G, Huang J, Wang J. Protective effects of Rosavin on bleomycin-induced pulmonary fibrosis via suppressing fibrotic and inflammatory signaling pathways in mice. *Biomed Pharmacother*. 2019 Jul;115:108870. doi:10.1016/j.biopha.2019.108870. Epub 2019 Apr 23. PMID:31026730.
2. PubMed ID: 34116043, Chen M, Wang Z, Zhou W, Lu C, Ji T, Yang W, Jin Z, Tian Y, Lei W, Wu S, Fu Q, Wu Z, Wu X, Han M, Fang M, Yang Y. SIRT1/PGC-1alpha signaling activation by mangiferin attenuates cerebral hypoxia/reoxygenation injury in neuroblastoma cells. *Eur J Pharmacol*. 2021 Jun 8;174236. doi:10.1016/j.ejphar.2021.174236. Epub ahead of print. PMID:34116043.
3. PubMed ID: -, Huanyue Cui, Xueying Liu, Jin Zhang, Ke Zhang, Dahong Yao, Shi Dong, Shushu Feng, Lu Yang, Yuyao Li, Hangyu Wang, Jian Huang, Jinhui Wang, "Rhodiola rosea L. Attenuates Cigarette Smoke and Lipopolysaccharide-Induced COPD in Rats via Inflammation Inhibition and Antioxidant and Antifibrosis Pathways", *Evidence-Based Complementary and Alternative Medicine*, vol. 2021, Article ID 6103158, 18 pages, 2021. <https://doi.org/10.1155/2021/6103158>

Visit [bosterbio.com/anti-nrf2-rabbit-monoclonal-antibody-m00078-boster.html](https://www.bosterbio.com/anti-nrf2-rabbit-monoclonal-antibody-m00078-boster.html) to see all 9 publications.

## Submit a product review to Biocompare.com

Submit a review of this product to Biocompare.com to receive a \$20 Amazon.com giftcard! Your reviews help your fellow scientists make the right decisions. Thank you for your contribution.



Anti-Nrf2 NFE2L2 Rabbit Monoclonal Antibody