

Anti-Von Hippel Lindau (VHL) Mouse Monoclonal Antibody [Clone ID: OTI1E1]

Catalog Number: M00079

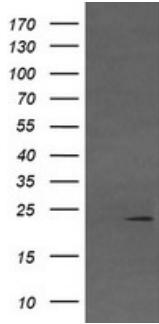
Overview

Product Name	Anti-Von Hippel Lindau (VHL) Mouse Monoclonal Antibody [Clone ID: OTI1E1]
Reactive Species	Human, Mouse, Rat
Description	Boster Bio VHL (Von Hippel Lindau) mouse monoclonal antibody, clone OTI1E1 (formerly 1E1). Catalog# M00079. Tested in IHC, WB. This antibody reacts with Human, Mouse, Rat.
Application	IHC, WB
Clonality	Monoclonal OTI1E1
Formulation	PBS (pH 7.3) containing 1% stabilizing protein, 50% glycerol and 0.02% sodium azide. This antibody is supplied in a stabilized formulation. Compatibility with conjugation reactions depends on the chemistry of the conjugation method used. For conjugation methods that are not compatible with the stabilizing components present in this formulation, a carrier-free antibody format is required.
Storage Instructions	Store at -20°C as received.
Host	Mouse
Uniprot ID	P40337

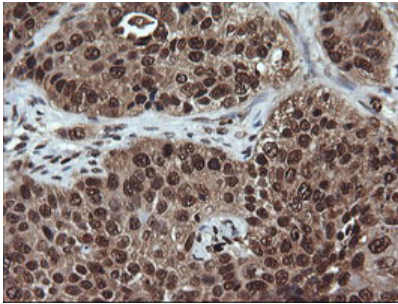
Technical Details

Immunogen	Full length human recombinant protein of human VHL (NP_000542) produced in HEK293T cell.
Isotype	IgG2b
Concentration	1 mg/ml
Purification	Purified from mouse ascites fluids or tissue culture supernatant by affinity chromatography (protein A/G)
Suggested Dilutions	WB 1:4000 IHC 1:150

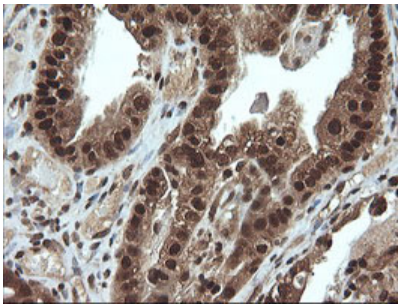
Anti-Von Hippel Lindau (VHL) Mouse Monoclonal Antibody [Clone ID: OTI1E1] (M00079) Images



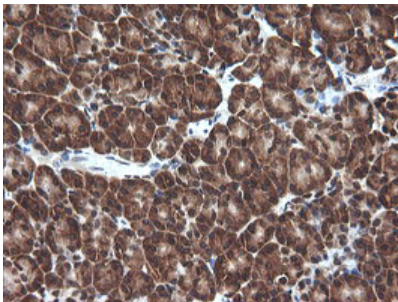
HEK293T cells were transfected with the pCMV6-ENTRY control (Left lane) or pCMV6-ENTRY VHL (Right lane) cDNA for 48 hrs and lysed. Equivalent amounts of cell lysates (5 ug per lane) were separated by SDS-PAGE and immunoblotted with anti-VHL.



Immunohistochemical staining of paraffin-embedded Carcinoma of Human lung tissue using anti-VHL mouse monoclonal antibody. (Heat-induced epitope retrieval by 10mM citric buffer)

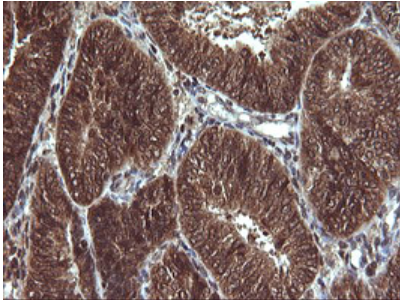
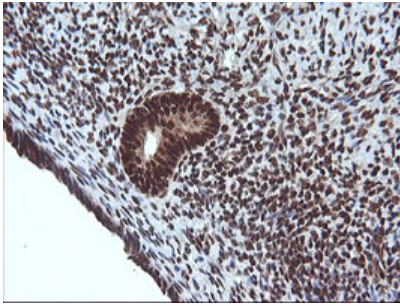


Immunohistochemical staining of paraffin-embedded Adenocarcinoma of Human ovary tissue using anti-VHL mouse monoclonal antibody. (Heat-induced epitope retrieval by 10mM citric buffer)

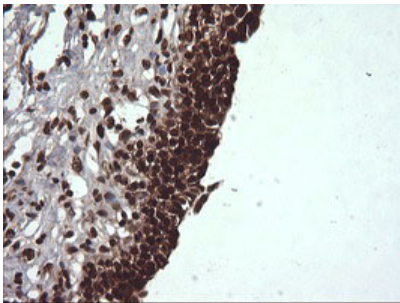


Immunohistochemical staining of paraffin-embedded Human pancreas tissue within the normal limits using anti-VHL mouse monoclonal antibody. (Heat-induced epitope retrieval by 10mM citric buffer)

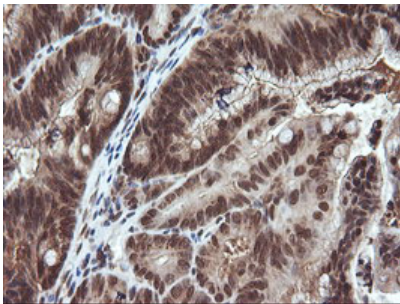
Immunohistochemical staining of paraffin-embedded Human endometrium tissue within the normal limits using anti-VHL mouse monoclonal antibody. (Heat-induced epitope retrieval by 10mM citric buffer)



Immunohistochemical staining of paraffin-embedded Adenocarcinoma of Human endometrium tissue using anti-VHL mouse monoclonal antibody. (Heat-induced epitope retrieval by 10mM citric buffer)



Immunohistochemical staining of paraffin-embedded Human bladder tissue within the normal limits using anti-VHL mouse monoclonal antibody. (Heat-induced epitope retrieval by 10mM citric buffer)



Immunohistochemical staining of paraffin-embedded Adenocarcinoma of Human colon tissue using anti-VHL mouse monoclonal antibody. (Heat-induced epitope retrieval by 10mM citric buffer)

Submit a product review to [Biocompare.com](https://www.biocompare.com)

Submit a review of this product to [Biocompare.com](https://www.biocompare.com) to receive a \$20 Amazon.com giftcard! Your reviews help your fellow scientists make the right decisions. Thank you for your contribution.



Anti-Von Hippel Lindau (VHL) Mouse Monoclonal Antibody [Clone ID: OT11E1]

For Research Use Only. Not for use in diagnostic procedures.