

Anti-Amyloid Precursor Protein (APP) Mouse Monoclonal Antibody [Clone ID: OTI3E3]

Catalog Number: M00081-1

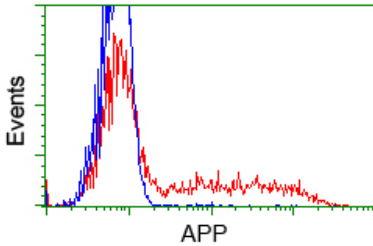
Overview

Product Name	Anti-Amyloid Precursor Protein (APP) Mouse Monoclonal Antibody [Clone ID: OTI3E3]
Reactive Species	Human
Description	Boster Bio Anti-APP (Amyloid beta precursor protein) mouse monoclonal antibody, clone OTI3E3 (formerly 3E3). Catalog# M00081-1. Tested in FC, IF, IHC, WB. This antibody reacts with Human.
Conjugate	Unconjugated
Application	Flow Cytometry, IF, IHC, WB
Clonality	Monoclonal OTI3E3
Formulation	PBS (pH 7.3) containing 1% stabilizing protein, 50% glycerol and 0.02% sodium azide. This antibody is supplied in a stabilized formulation. Compatibility with conjugation reactions depends on the chemistry of the conjugation method used. For conjugation methods that are not compatible with the stabilizing components present in this formulation, a carrier-free antibody format is required.
Storage Instructions	Store at -20°C for one year. For short term storage and frequent use, store at 4°C for up to one month. Avoid repeated freeze-thaw cycles.
Host	Mouse
Uniprot ID	P05067

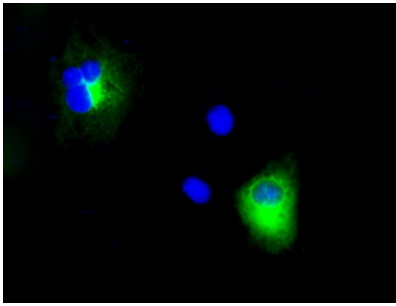
Technical Details

Immunogen	Full length human recombinant protein of human APP (NP_000475) produced in HEK293T cell.
Isotype	IgG1
Concentration	0.75 mg/ml
Purification	Purified from mouse ascites fluids or tissue culture supernatant by affinity chromatography (protein A/G)
Suggested Dilutions	WB 1:500 IHC 1:50 IF 1:100 Flow Cytometry 1:100

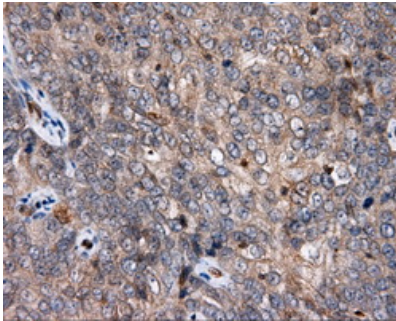
Anti-Amyloid Precursor Protein (APP) Mouse Monoclonal Antibody [Clone ID: OTI3E3] (M00081-1) Images



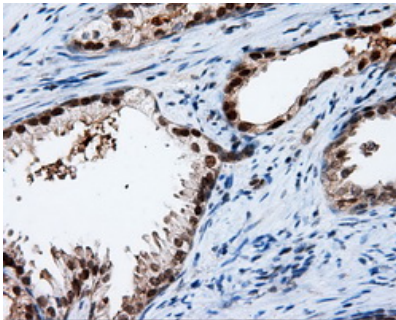
HEK293T cells transfected with either pCMV6-ENTRY APP (Red) or empty vector control plasmid (Blue) were immunostained with anti-APP mouse monoclonal (M00081-1)



Anti-APP mouse monoclonal antibody (M00081-1) immunofluorescent staining of COS7 cells transiently transfected by pCMV6-ENTRY APP.

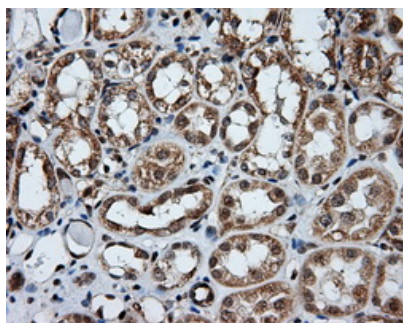
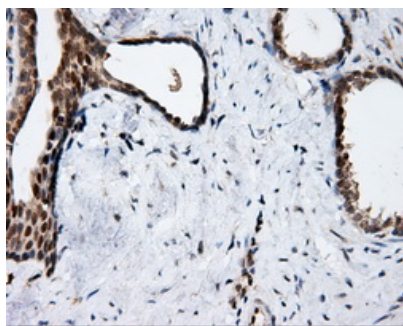


Immunohistochemical staining of paraffin-embedded Adenocarcinoma of ovary tissue using anti-APP mouse monoclonal antibody. (Heat-induced epitope retrieval by 10mM citric buffer)

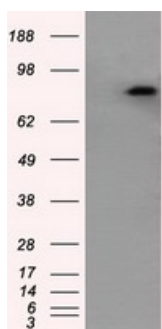


Immunohistochemical staining of paraffin-embedded prostate tissue within the normal limits using anti-APP mouse monoclonal antibody. (Heat-induced epitope retrieval by 10mM citric buffer)

Immunohistochemical staining of paraffin-embedded Carcinoma of prostate tissue using anti-APP mouse monoclonal antibody. (Heat-induced epitope retrieval by 10mM citric buffer)



Immunohistochemical staining of paraffin-embedded Kidney tissue within the normal limits using anti-APP mouse monoclonal antibody. (Heat-induced epitope retrieval by 10mM citric buffer)



HEK293T cells were transfected with the pCMV6-ENTRY control (Left lane) or pCMV6-ENTRY APP (Right lane) cDNA for 48 hrs and lysed. Equivalent amounts of cell lysates (5 ug per lane) were separated by SDS-PAGE and immunoblotted with anti-APP.

Submit a product review to Biocompare.com

Submit a review of this product to Biocompare.com to receive a \$20 Amazon.com giftcard! Your reviews help your fellow scientists make the right decisions. Thank you for your contribution.



Anti-Amyloid Precursor Protein (APP) Mouse Monoclonal Antibody [Clone ID: OT13E3]

For Research Use Only. Not for use in diagnostic procedures.