

Anti-Smad2 Rabbit Monoclonal Antibody

Catalog Number: M00090-1

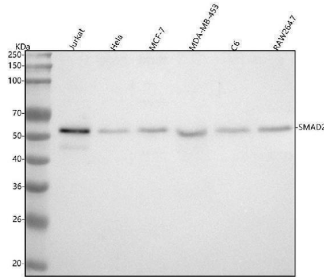
Overview

Product Name	Anti-Smad2 Rabbit Monoclonal Antibody
Reactive Species	Human, Mouse, Rat
Description	Boster Bio Anti-Smad2 Rabbit Monoclonal Antibody catalog # M00090-1. Tested in WB, ICC/IF, Flow Cytometry applications. This antibody reacts with Human, Mouse, Rat.
Application	Flow Cytometry, IF, ICC, WB
Clonality	Monoclonal ACI-19
Formulation	Rabbit IgG in stabilizing components, phosphate buffered saline, pH 7.4, 150mM NaCl, 0.02% sodium azide and 50% glycerol. *This antibody is supplied in a stabilized formulation. Compatibility with conjugation reactions depends on the chemistry of the conjugation method used. For conjugation methods that are not compatible with the stabilizing components present in this formulation, a carrier-free antibody format is required.
Storage Instructions	Store at -20°C for one year. For short term storage and frequent use, store at 4°C for up to one month. Avoid repeated freeze-thaw cycles.
Host	Rabbit
Uniprot ID	Q15796

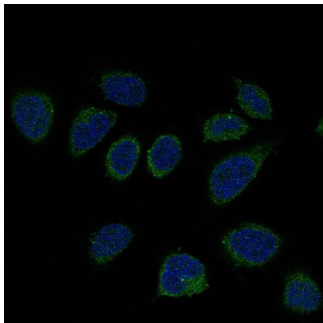
Technical Details

Immunogen	A synthesized peptide derived from human Smad2
Isotype	Rabbit IgG
Form	Liquid
Concentration	0.5mg/ml
Purification	Affinity-chromatography
Suggested Dilutions	WB 1:500-2000 ICC/IF 1:50-200 FC 1:20

Anti-Smad2 Rabbit Monoclonal Antibody (M00090-1) Images



Western blot analysis of SMAD2 using anti-SMAD2 antibody (M00090-1). Electrophoresis was performed on a 5-20% SDS-PAGE gel at 70V (Stacking gel) / 90V (Resolving gel) for 2-3 hours. The sample well of each lane was loaded with 30 ug of sample under reducing conditions. Lane 1: human Jurkat whole cell lysates, Lane 2: human Hela whole cell lysates, Lane 3: human MCF-7 whole cell lysates, Lane 4: human MDA-MB-453 whole cell lysates, Lane 5: rat C6 whole cell lysates, Lane 6: mouse RAW264.7 whole cell lysates. After electrophoresis, proteins were transferred to a nitrocellulose membrane at 150 mA for 50-90 minutes. Blocked the membrane with 5% non-fat milk/TBS for 1.5 hour at RT. The membrane was incubated with rabbit anti-SMAD2 antigen affinity purified monoclonal antibody (Catalog # M00090-1) at 1:500 overnight at 4°C, then washed with TBS-0.1%Tween 3 times with 5 minutes each and probed with a goat anti-rabbit IgG-HRP secondary antibody at a dilution of 1:500 for 1.5 hour at RT. The signal is developed using an Enhanced Chemiluminescent detection (ECL) kit (Catalog # EK1002) with Tanon 5200 system. A specific band was detected for SMAD2 at approximately 52 kDa. The expected band size for SMAD2 is at 52 kDa.



Immunofluorescent analysis of Hela cells, using Smad2 Antibody.

3 Publications Citing This Product

1. PubMed ID: 27019660, Effect of Kujije Granule on the Expression of TGF- β /Smads Signaling Pathway in Patients with Ulcerative Colitis
2. PubMed ID: 26261569, Astragaloside effect on TGF- β 1, SMAD2/3, and β 1-SMA expression in the kidney tissues of diabetic KKAY mice
3. PubMed ID: 30090338, Mouse hepatic neoplasm formation induced by trace level and low frequency exposure to diethylnitrosamine through β 2-catenin signaling pathway

Visit bosterbio.com/anti-smad2-rabbit-monoclonal-antibody-m00090-1-boster.html to see all 3 publications.

Submit a product review to Biocompare.com

Submit a review of this product to Biocompare.com to receive a \$20 Amazon.com giftcard! Your



reviews help your fellow scientists make the right decisions. Thank you for your contribution.

Anti-Smad2 Rabbit Monoclonal Antibody

For Research Use Only. Not for use in diagnostic procedures.