

Anti-Smad2 Rabbit Monoclonal Antibody

Catalog Number: M00090-5

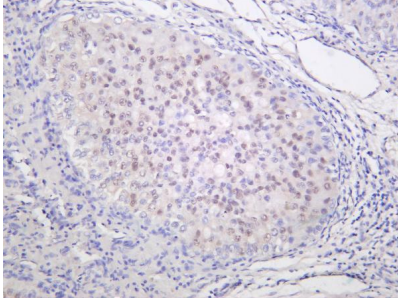
Overview

Product Name	Anti-Smad2 Rabbit Monoclonal Antibody
Reactive Species	Human, Mouse, Rat
Description	The antibody detects endogenous levels of Smad2 protein only when phosphorylated at Ser250. The antibody does not cross-react with Smad2 phosphorylated at other sites. Validated for research with WB,IHC,IF,IP,ELISA applications. Anti Smad2 is reactive for Human, Mouse, Rat samples
Application	ELISA, IP, IF, IHC, WB
Clonality	Monoclonal
Formulation	PBS, 50% glycerol, 0.05% Proclin 300, 0.05% stabilizing protein This antibody is supplied in a stabilized formulation. Compatibility with conjugation reactions depends on the chemistry of the conjugation method used. For conjugation methods that are not compatible with the stabilizing components present in this formulation, a carrier-free antibody format is required.
Storage Instructions	Store at -20°C/1 year
Host	Rabbit
Uniprot ID	Q15796

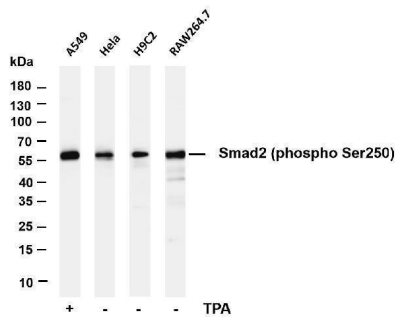
Technical Details

Isotype	IgG, Kappa
Purification	Protein A
Suggested Dilutions	IHC 1:100-1:500 WB 1:1000-1:5000 IF 1:200-1:1000 ELISA 1:5000-1:20000 IP 1:50-1:200

Anti-Smad2 Rabbit Monoclonal Antibody (M00090-5) Images



Human hepatocellular carcinoma was stained with anti-Smad2 (phospho Ser250) rabbit antibody



Various whole cell lysates were separated by 4-20% SDS-PAGE, and the membrane was blotted with anti-Smad2 (phospho Ser250) antibody. The HRP-conjugated Goat anti-Rabbit IgG(H + L) antibody was used to detect the antibody. Lane 1: A549 treated with TPA for 48 hours Lane 2: HeLa Lane 3: H9C2 Lane 4: RAW264.7 Predicted band size: 58kDa Observed band size: 58kDa

Submit a product review to Biocompare.com

Submit a review of this product to Biocompare.com to receive a \$20 Amazon.com giftcard! Your reviews help your fellow scientists make the right decisions. Thank you for your contribution.



Anti-Smad2 Rabbit Monoclonal Antibody

For Research Use Only. Not for use in diagnostic procedures.