

Anti-CD140b (C-term) (PDGFR-beta) (Platelet-derived growth factor receptor beta) Rabbit Monoclonal Antibody, Clone#RM303

Catalog Number: M00096-2

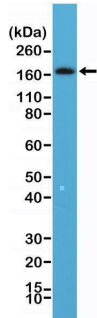
Overview

Product Name	Anti-CD140b (C-term) (PDGFR-beta) (Platelet-derived growth factor receptor beta) Rabbit Monoclonal Antibody, Clone#RM303
Reactive Species	Human
Description	Boster Bio Anti-CD140b (C-term) (PDGFR-beta) (Platelet-derived growth factor receptor beta) Rabbit Monoclonal Antibody, Clone#RM303 (Catalog # M00096-2). Tested in IHC, WB applications. This antibody reacts with Human.
Application	IHC, WB
Clonality	Monoclonal RM303
Formulation	50% Glycerol/PBS with 1% stabilizing protein and 0.09% sodium azide This antibody is supplied in a stabilized formulation. Compatibility with conjugation reactions depends on the chemistry of the conjugation method used. For conjugation methods that are not compatible with the stabilizing components present in this formulation, a carrier-free antibody format is required.
Storage Instructions	Store at -20°C for one year. Avoid repeated freeze-thaw cycles.
Host	Rabbit
Uniprot ID	P09619

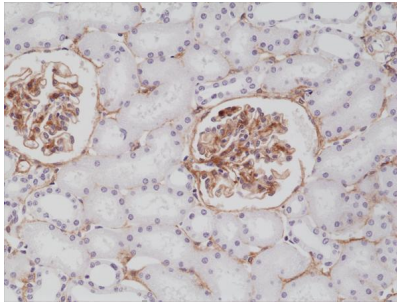
Technical Details

Immunogen	A peptide corresponding to the C-terminus of human CD140b
Cross Reactivity	This antibody reacts to human CD140b (PDGFR-beta) (Platelet-derived growth factor receptor beta).
Isotype	Rabbit IgG
Form	Liquid
Concentration	0.5-1mg/ml, actual concentration vary by lot. Use suggested dilution ratio to decide dilution procedure.
Purification	Protein A affinity purified from an animal origin-free culture supernatant
Suggested Dilutions	Immunohistochemistry (IHC): 1:500-1:1000 dilution WB: 1:250-1:500 dilution.

Anti-CD140b (C-term) (PDGFR-beta) (Platelet-derived growth factor receptor beta) Rabbit Monoclonal Antibody, Clone#RM303 (M00096-2) Images



Western Blotting result Western Blot of human brain tissue lysate using anti-CD140b rabbit monoclonal antibody (Clone RM303) at a 1:100 dilution.



IHC result Immunohistochemical staining of formalin fixed and paraffin embedded human kidney tissue section using anti-CD140b rabbit monoclonal antibody (Clone RM303) at a 1:200 dilution.

Submit a product review to Biocompare.com

Submit a review of this product to Biocompare.com to receive a \$20 Amazon.com giftcard! Your reviews help your fellow scientists make the right decisions. Thank you for your contribution.



Anti-CD140b (C-term) (PDGFR-beta) (Platelet-derived growth factor receptor beta) Rabbit Monoclonal Antibody,

Clone#RM303

For Research Use Only. Not for use in diagnostic procedures.