

Anti-IL1 beta Rabbit Monoclonal Antibody

Catalog Number: M00101

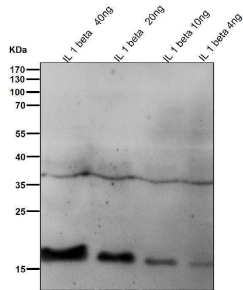
Overview

Product Name	Anti-IL1 beta Rabbit Monoclonal Antibody
Reactive Species	Human
Description	Boster Bio Anti-IL1 beta Rabbit Monoclonal Antibody catalog # M00101. Tested in WB application. This antibody reacts with Human.
Application	WB
Clonality	Monoclonal IBF-9
Formulation	Rabbit IgG in stabilizing components, phosphate buffered saline, pH 7.4, 150mM NaCl, 0.02% sodium azide and 50% glycerol. *This antibody is supplied in a stabilized formulation. Compatibility with conjugation reactions depends on the chemistry of the conjugation method used. For conjugation methods that are not compatible with the stabilizing components present in this formulation, a carrier-free antibody format is required.
Storage Instructions	Store at -20°C for one year. For short term storage and frequent use, store at 4°C for up to one month. Avoid repeated freeze-thaw cycles.
Host	Rabbit
Uniprot ID	P01584

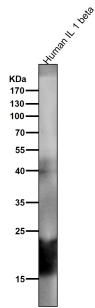
Technical Details

Immunogen	A synthesized peptide derived from human IL1 beta
Isotype	Rabbit IgG
Form	Liquid
Concentration	0.5mg/ml
Purification	Affinity-chromatography
Suggested Dilutions	WB 1:500-1:2000

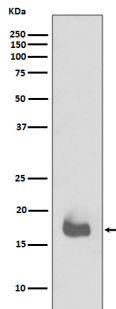
Anti-IL1 beta Rabbit Monoclonal Antibody (M00101) Images



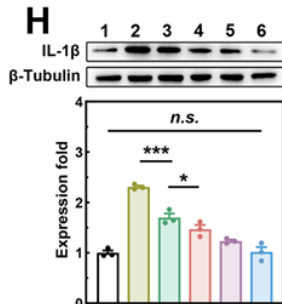
All lanes use the Antibody at 1:500 dilution for 1 hour at room temperature.



All lanes use the Antibody at 1:500 dilution for 1 hour at room temperature.



Western blot analysis of IL1 beta expression in recombinant IL1 beta protein.



Western blot analysis of IL1 beta using anti-IL1 beta antibody (M00101). Electrophoresis was performed on a 5-20% SDS-PAGE gel at 80V (Stacking gel) / 120V (Resolving gel) for 2 hours. The sample well of each lane was loaded with 30 ug of sample under reducing conditions. Lane 1-6: mouse PACs whole cell lysates, After electrophoresis, proteins were transferred to a nitrocellulose membrane at 150 mA for 50-90 minutes. Blocked the membrane with 5% non-fat milk/TBS for 1.5 hour at RT. The membrane was incubated with rabbit anti-IL1 beta antigen affinity purified polyclonal antibody (M00101) at 1:1000 overnight at 4°C, then washed with TBS-0.1%Tween 3 times with 5 minutes each and probed with a goat anti-rabbit IgG-HRP secondary antibody (Catalog # BA1054) at a dilution of 1:5000 for 1.5 hour at RT. The signal is developed using an ECL Plus Western Blotting Substrate (Catalog # AR1196-200) with ChemiDoc MP system. The expected band size for IL1 beta is at 30 kDa.

4 Publications Citing This Product

1. PubMed ID: 22942709, Qin Q, Niu J, Wang Z, Xu W, Qiao Z, Gu Y. Int J Mol Sci. 2012;13(7):8379-87. Doi: 10.3390/ijms13078379. Epub 2012 Jul 5. Astragalus Membranaceus Inhibits Inflammation Via Phospho-P38 Mitogen-Activated Protein Kinase (Mapk) And Nuclear Factor (Nf)-...

2. PubMed ID: 25338658, Antenatal exposure of maternal secondhand smoke (SHS) increases fetal lung expression of RAGE and induces RAGE-mediated pulmonary inflammation

3. PubMed ID: 28910983, Quantitative proteomic analysis of host responses triggered by Mycobacterium tuberculosis infection in human macrophage cells

Visit bosterbio.com/anti-il1-beta-rabbit-monoclonal-antibody-m00101-boster.html to see all 4 publications.

Submit a product review to Biocompare.com

Submit a review of this product to Biocompare.com to receive a \$20 Amazon.com giftcard! Your reviews help your fellow scientists make the right decisions. Thank you for your contribution.



Anti-IL1 beta Rabbit Monoclonal Antibody

For Research Use Only. Not for use in diagnostic procedures.