

Anti-IL1 beta (IL1B) Mouse Monoclonal Antibody [Clone ID: OTI3E1]

Catalog Number: M00101-2

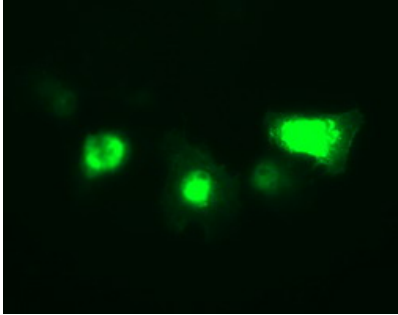
Overview

Product Name	Anti-IL1 beta (IL1B) Mouse Monoclonal Antibody [Clone ID: OTI3E1]
Reactive Species	Human
Description	Boster Bio IL1B mouse monoclonal antibody, clone OTI3E1 (formerly 3E1). Catalog# M00101-2. Tested in IF, IHC, WB. This antibody reacts with Human.
Conjugate	Unconjugated
Application	IF, IHC, WB
Clonality	Monoclonal OTI3E1
Formulation	PBS (pH 7.3) containing 1% stabilizing protein, 50% glycerol and 0.02% sodium azide. This antibody is supplied in a stabilized formulation. Compatibility with conjugation reactions depends on the chemistry of the conjugation method used. For conjugation methods that are not compatible with the stabilizing components present in this formulation, a carrier-free antibody format is required.
Storage Instructions	Store at -20°C for one year. For short term storage and frequent use, store at 4°C for up to one month. Avoid repeated freeze-thaw cycles.
Host	Mouse
Uniprot ID	P01584

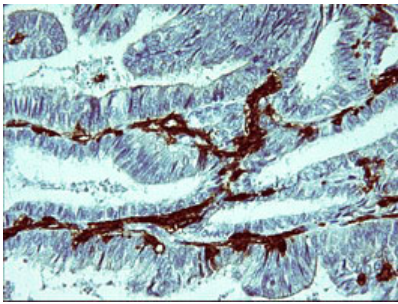
Technical Details

Immunogen	Full length human recombinant protein of human IL1B (NP_000567) produced in HEK293T cell.
Isotype	IgG1
Concentration	1 mg/ml
Purification	Purified from mouse ascites fluids or tissue culture supernatant by affinity chromatography (protein A/G)
Suggested Dilutions	WB 1:1000~4000 IHC 1:150 IF 1:100

Anti-IL1 beta (IL1B) Mouse Monoclonal Antibody [Clone ID: OTI3E1] (M00101-2) Images



Anti-IL1B mouse monoclonal antibody (M00101-2) immunofluorescent staining of COS7 cells transiently transfected by pCMV6-ENTRY IL1B.



Immunohistochemical staining of paraffin-embedded Adenocarcinoma of Human endometrium tissue using anti-IL1B mouse monoclonal antibody. (Heat-induced epitope retrieval by 10mM citric buffer)

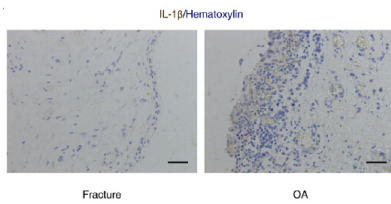
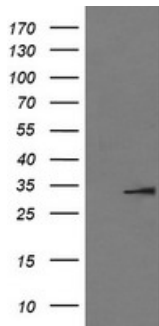


Figure from citation: Immunohistochemistry of IL1B protein level by using anti-IL1B antibody in synovial tissues from fracture and OA patients



HEK293T cells were transfected with the pCMV6-ENTRY control (Left lane) or pCMV6-ENTRY IL1B (Right lane) cDNA for 48 hrs and lysed. Equivalent amounts of cell lysates (5 ug per lane) were separated by SDS-PAGE and immunoblotted with anti-IL1B.

Submit a product review to Biocompare.com

Submit a review of this product to Biocompare.com to receive a \$20 Amazon.com giftcard! Your reviews help your fellow scientists make the right decisions. Thank you for your contribution.



Anti-IL1 beta (IL1B) Mouse Monoclonal Antibody [Clone ID: OTI3E1]

For Research Use Only. Not for use in diagnostic procedures.