

Anti-Glucose 6 phosphate isomerase (GPI) Mouse Monoclonal Antibody [Clone ID: OTI5A11]

Catalog Number: M00108

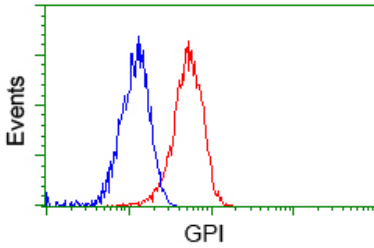
Overview

Product Name	Anti-Glucose 6 phosphate isomerase (GPI) Mouse Monoclonal Antibody [Clone ID: OTI5A11]
Reactive Species	Dog, Human, Monkey, Mouse, Rat
Description	Boster Bio Anti-GPI (Glucose 6 phosphate isomerase) mouse monoclonal antibody, clone OTI5A11 (formerly 5A11). Catalog# M00108. Tested in FC, IF, IHC, WB. This antibody reacts with Human, Monkey, Mouse, Rat, Dog.
Conjugate	Unconjugated
Application	Flow Cytometry, IF, IHC, WB
Clonality	Monoclonal OTI5A11
Formulation	PBS (pH 7.3) containing 1% stabilizing protein, 50% glycerol and 0.02% sodium azide. This antibody is supplied in a stabilized formulation. Compatibility with conjugation reactions depends on the chemistry of the conjugation method used. For conjugation methods that are not compatible with the stabilizing components present in this formulation, a carrier-free antibody format is required.
Storage Instructions	Store at -20°C for one year. For short term storage and frequent use, store at 4°C for up to one month. Avoid repeated freeze-thaw cycles.
Host	Mouse
Uniprot ID	P06744

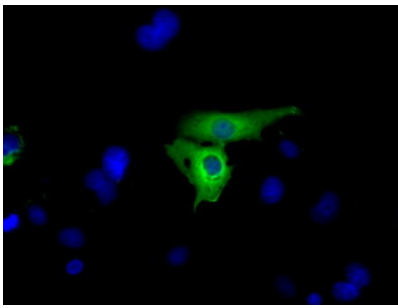
Technical Details

Immunogen	Full length human recombinant protein of human GPI (NP_000166) produced in HEK293T cell.
Isotype	IgG2b
Concentration	0.72 mg/ml
Purification	Purified from mouse ascites fluids or tissue culture supernatant by affinity chromatography (protein A/G)
Suggested Dilutions	WB 1:1000~2000 IHC 1:50 IF 1:100 Flow Cytometry 1:100

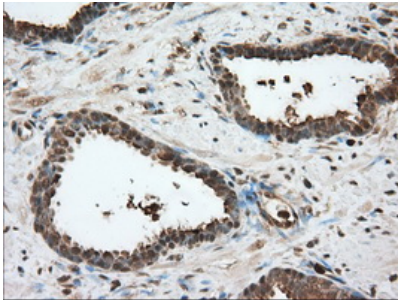
Anti-Glucose 6 phosphate isomerase (GPI) Mouse Monoclonal Antibody [Clone ID: OTI5A11] (M00108) Images



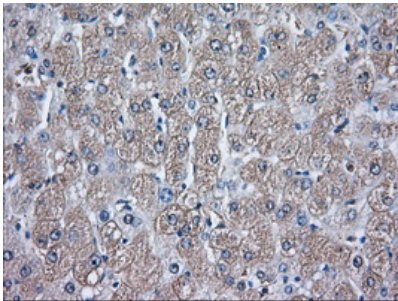
Flow cytometric Analysis of Jurkat cells



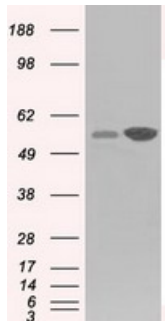
Anti-GPI mouse monoclonal antibody (M00108) immunofluorescent staining of COS7 cells transiently transfected by pCMV6-ENTRY GPI.



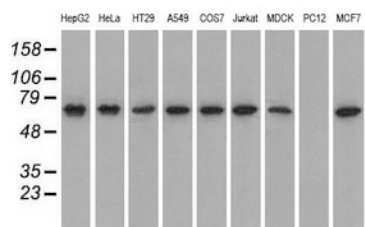
Immunohistochemical staining of paraffin-embedded Carcinoma of Human prostate tissue using anti-GPI mouse monoclonal antibody. (Heat-induced epitope retrieval by 10mM citric buffer)



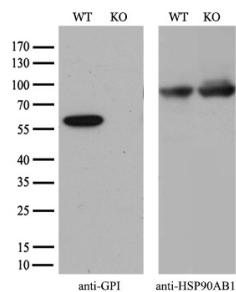
Immunohistochemical staining of paraffin-embedded Human liver tissue within the normal limits using anti-GPI mouse monoclonal antibody. (Heat-induced epitope retrieval by 10mM citric buffer)



HEK293T cells were transfected with the pCMV6-ENTRY control (Left lane) or pCMV6-ENTRY GPI (Right lane) cDNA for 48 hrs and lysed. Equivalent amounts of cell lysates (5 ug per lane) were separated by SDS-PAGE and immunoblotted with anti-GPI.



Western blot analysis of extracts (35ug) from 9 different cell lines by using anti-GPI monoclonal antibody.



Equivalent amounts of cell lysates (10 ug per lane) of wild-type 293T cells (WT) and GPI-Knockout 293T cells (KO) were separated by SDS-PAGE and immunoblotted with anti-GPI monoclonal antibody M00108 (1:500). Then the blotted membrane was stripped and reprobed with anti-HSP90 antibody as a loading control.

Submit a product review to Biocompare.com

Submit a review of this product to Biocompare.com to receive a \$20 Amazon.com giftcard! Your reviews help your fellow scientists make the right decisions. Thank you for your contribution.



Anti-Glucose 6 phosphate isomerase (GPI) Mouse Monoclonal Antibody [Clone ID: OTI5A11]

For Research Use Only. Not for use in diagnostic procedures.