

Anti-PD-L1 (CD274) Rabbit Monoclonal Antibody

Catalog Number: M00109

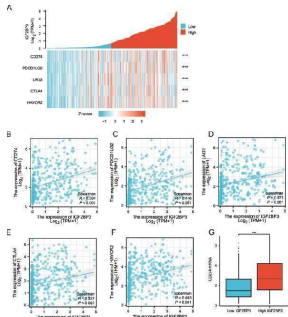
Overview

Product Name	Anti-PD-L1 (CD274) Rabbit Monoclonal Antibody
Reactive Species	Human, Mouse, Rat
Description	Boster Bio Anti-PD-L1 (CD274) Rabbit Monoclonal Antibody catalog # M00109. Tested in WB, IHC applications. This antibody reacts with Human, Mouse, Rat.
Application	IHC, WB
Clonality	Monoclonal IDC-3
Formulation	Rabbit IgG in stabilizing components, phosphate buffered saline, pH 7.4, 150mM NaCl, 0.02% sodium azide and 50% glycerol. *This antibody is supplied in a stabilized formulation. Compatibility with conjugation reactions depends on the chemistry of the conjugation method used. For conjugation methods that are not compatible with the stabilizing components present in this formulation, a carrier-free antibody format is required.
Storage Instructions	Store at -20°C for one year. For short term storage and frequent use, store at 4°C for up to one month. Avoid repeated freeze-thaw cycles.
Host	Rabbit
Uniprot ID	Q9NZQ7

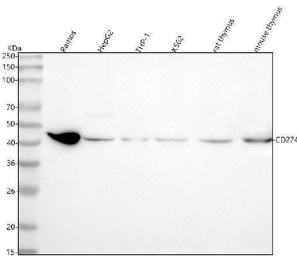
Technical Details

Immunogen	A synthesized peptide derived from human PD-L1 (CD274)
Isotype	Rabbit IgG
Form	Liquid
Concentration	0.5mg/ml
Purification	Affinity-chromatography
Suggested Dilutions	WB 1:500-2000 IHC 1:50-200

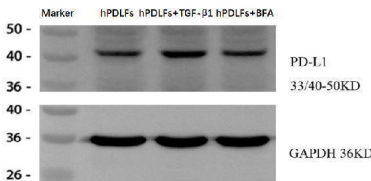
Anti-PD-L1 (CD274) Rabbit Monoclonal Antibody (M00109) Images



IGF2BP3 expression was significantly associated with PD-L1 expression. A heatmap of immune checkpoints based on IGF2BP3 expression. B - F the correlation between IGF2BP3 expression and CD274 (PDL-1), PDCD1LG2 (PDL-2), LAG3, CTLA4, and HAVCR2. G, PD-L1 mRNA expression increased by IGF2BP3 upregulation Index in PubMed under a CC BY license. PMID: 36732736

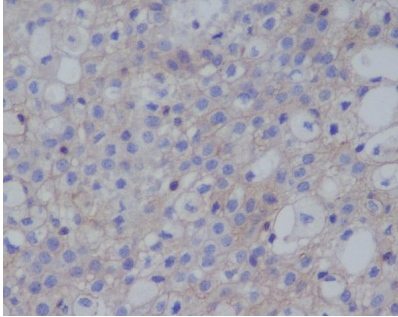


Western blot analysis of PD-L1 using anti-PD-L1 antibody (M00109). Electrophoresis was performed on a 5-20% SDS-PAGE gel at 70V (Stacking gel) / 90V (Resolving gel) for 2-3 hours. The sample well of each lane was loaded with 30 ug of sample under reducing conditions. Lane 1: human Ramos whole cell lysates, Lane 2: human HepG2 whole cell lysates, Lane 3: human THP-1 whole cell lysates, Lane 4: human K562 whole cell lysates, Lane 5: rat thymus tissue lysates, Lane 6: mouse thymus tissue lysates. After electrophoresis, proteins were transferred to a nitrocellulose membrane at 150 mA for 50-90 minutes. Blocked the membrane with 5% non-fat milk/TBS for 1.5 hour at RT. The membrane was incubated with rabbit anti-PD-L1 antigen affinity purified monoclonal antibody (Catalog # M00109) at 1:100 overnight at 4°C, then washed with TBS-0.1%Tween 3 times with 5 minutes each and probed with a goat anti-rabbit IgG-HRP secondary antibody at a dilution of 1:5000 for 1.5 hour at RT. The signal is developed using an Enhanced Chemiluminescent detection (ECL) kit (Catalog # EK1002) with Tanon 5200 system. A specific band was detected for PD-L1 at approximately 40 kDa. The expected band size for PD-L1 is at 33 kDa.



Western blot analysis of PD-L1 using anti-PD-L1 antibody (M00109). Electrophoresis was performed on a 5-20% SDS-PAGE gel at 70V (Stacking gel) / 90V (Resolving gel) for 2-3 hours. The sample well of each lane was loaded with 30 ug of sample under reducing conditions. Lane 1: Human periodontal ligament fibroblasts whole cell lysates, Lane 2: TGF-beta1-induced with human periodontal ligament fibroblasts whole cell lysates, Lane 3: Brefeldin A-treated with human periodontal ligament fibroblasts whole cell lysates. After electrophoresis, proteins were transferred to a nitrocellulose membrane at 150 mA for 50-90 minutes. Blocked the membrane with 5% non-fat milk/TBS for 1.5 hour at RT. The membrane was incubated with rabbit anti-PD-L1 antigen affinity purified monoclonal antibody (Catalog # M00109) at 1:2000 overnight at 4°C, then washed with TBS-0.1%Tween 3 times with 5 minutes each and probed with a goat anti-rabbit IgG-HRP secondary antibody at a dilution of 1:10000 for 1 hour at RT. The signal is developed using an Enhanced Chemiluminescent detection (ECL) kit

(Catalog # EK1002) with ChemiDoc MP system. A specific band was detected for PD-L1 at approximately 40-50 kDa. The expected band size for PD-L1 is at 33 kDa.



Immunohistochemical analysis of paraffin-embedded human thymoma, using PD-L1 (CD274) Antibody.

2 Publications Citing This Product

1. PubMed ID: 33152901, He J,Zhang W,Di T,Meng J,Qi Y,Li G,Zhang Y,Su H,Yan W.Water extract of sporoderm-broken spores of Ganoderma lucidum enhanced pd-l1 antibody efficiency through downregulation and relieved complications of pd-l1 monoclonal antibody.Biomed Pharmacother.2020

2. PubMed ID: 30359281, CD25 and TGF- β 2 blockade based on predictive integrated immune ratio inhibits tumor growth in pancreatic cancer

Visit bosterbio.com/anti-pd-l1-cd274-rabbit-monoclonal-antibody-m00109-boster.html to see all 2 publications.

Submit a product review to Biocompare.com

Submit a review of this product to Biocompare.com to receive a \$20 Amazon.com giftcard! Your reviews help your fellow scientists make the right decisions. Thank you for your contribution.



Anti-PD-L1 (CD274) Rabbit Monoclonal Antibody

For Research Use Only. Not for use in diagnostic procedures.