

Anti-PD-L1 (CD274) (B7-H1) Rabbit Monoclonal Antibody, Clone#RM320

Catalog Number: M00109-1

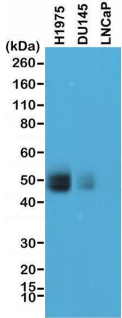
Overview

Product Name	Anti-PD-L1 (CD274) (B7-H1) Rabbit Monoclonal Antibody, Clone#RM320
Reactive Species	Human
Description	Boster Bio Anti-PD-L1 (CD274) (B7-H1) Rabbit Monoclonal Antibody, Clone#RM320 (Catalog # M00109-1). Tested in IHC, WB, ICC applications. This antibody reacts with Human.
Application	IHC, ICC, WB
Clonality	Monoclonal RM320
Formulation	50% Glycerol/PBS with 1% stabilizing protein and 0.09% sodium azide This antibody is supplied in a stabilized formulation. Compatibility with conjugation reactions depends on the chemistry of the conjugation method used. For conjugation methods that are not compatible with the stabilizing components present in this formulation, a carrier-free antibody format is required.
Storage Instructions	Store at -20°C for one year. Avoid repeated freeze-thaw cycles.
Host	Rabbit
Uniprot ID	Q9EP73

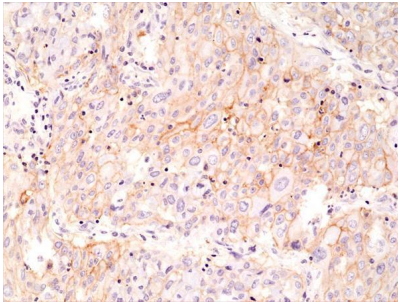
Technical Details

Immunogen	A peptide corresponding to the C-terminus of human PD-L1
Cross Reactivity	This antibody reacts to human PD-L1 (CD274) (B7-H1)
Isotype	Rabbit IgG
Form	Liquid
Concentration	0.5-1mg/ml, actual concentration vary by lot. Use suggested dilution ratio to decide dilution procedure.
Purification	Protein A affinity purified from an animal origin-free culture supernatant
Suggested Dilutions	Immunohistochemistry (IHC): 1:200-1:1000 dilution WB: 1:500-1:1000 dilution Immunocytochemistry (ICC): 1:200-1:500 dilution

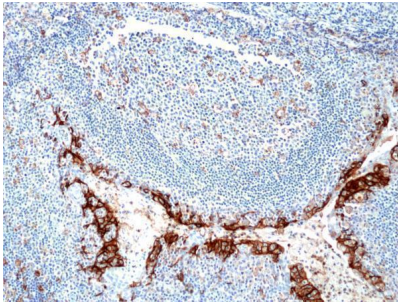
Anti-PD-L1 (CD274) (B7-H1) Rabbit Monoclonal Antibody, Clone#RM320 (M00109-1) Images



Western Blot of lysates H1975, DU145, and LNCaP cells, using anti-PD-L1 rabbit monoclonal antibody (Clone RM320) at a 1:1000 dilution.



Immunohistochemical staining of formalin fixed and paraffin embedded human lung cancer tissue section using anti-PD-L1 rabbit monoclonal antibody (Clone RM320) at a 1:1000 dilution.



Immunohistochemical staining of formalin fixed and paraffin embedded human tonsil tissue section using anti-PD-L1 rabbit monoclonal antibody (Clone RM320) at a 1:250 dilution.

Submit a product review to [Biocompare.com](https://www.biocompare.com)

Submit a review of this product to [Biocompare.com](https://www.biocompare.com) to receive a \$20 Amazon.com giftcard! Your reviews help your fellow scientists make the right decisions. Thank you for your contribution.



Anti-PD-L1 (CD274) (B7-H1) Rabbit Monoclonal Antibody, Clone#RM320

For Research Use Only. Not for use in diagnostic procedures.