

## Anti-PDL1 CD274 Monoclonal Antibody [4F2]

Catalog Number: M00109-2

### About CD274

Cell-mediated immune responses are initiated by T lymphocytes that are themselves stimulated by cognate peptides bound to MHC molecules on antigen-presenting cells (APC) (1). T-cell activation is generally self-limited as activated T cells express receptors such as PD-1 (also known as PDCD-1) that mediate inhibitory signals from the APC (2). PD-1 can bind two different but related ligands, PD-L1 and PD-L2. PD-L1 is a B7-related protein that inhibits cell-mediated immune responses by reducing the secretion of IL-2 and IL-10 from memory T cells (3). This suggests that PD-L1 may be useful in reducing allogenic CD4+ memory T-cell responses to endothelial cells, thereby reducing the likelihood of host immune responses to allografts. PD-L1 also functions as an immune checkpoint protein, and multiple anti-PD-L1 antibodies are currently in phase II and III clinical trials, with one antibody already approved for the treatment of cancer (4).

### Overview

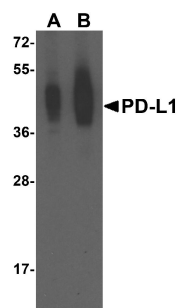
Product Name	Anti-PDL1 CD274 Monoclonal Antibody [4F2]
Reactive Species	Human
Description	Boster Bio Anti-PDL1 CD274 Monoclonal Antibody [4F2] (Catalog # M00109-2). Tested in ELISA, WB, IHC-P, ICC, IF, Flow Cytometry applications. This antibody reacts with Human.
Application	ELISA, Flow Cytometry, IF, IHC-P, ICC, WB
Clonality	Monoclonal Clone: 4F2
Formulation	PD-L1 Antibody is supplied in PBS containing 0.02% sodium azide and 50% glycerol.
Storage Instructions	PD-L1 antibody can be stored at 4°C for three months and -20°C, stable for up to one year. Avoid repeated freeze-thaw cycles. Antibodies should not be exposed to prolonged high temperatures.
Host	Mouse
Uniprot ID	Q9NZQ7

### Technical Details

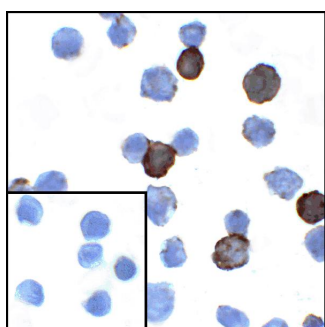
Immunogen	PD-L1 antibody was raised against the extracellular domain of human PD-L1.
Predicted Reactive Species	Human
Cross Reactivity	At least three isoforms of KLRA1 are known to exist; this antibody recognizes only the long isoform.
Isotype	IgG1
Form	Liquid
Concentration	1 mg/mL

Purification	PD-L1 Antibody is supplied as protein A purified IgG1.
Suggested Dilutions	<p>Dilute the sample so that the expected range of concentrations fall within the detection range of this kit.</p> <p>If the expected range of concentration is unknown, a pilot test should be conducted to decide the optimal dilution ratio for your samples.</p> <p>Some PubMed article(s) citing the expression level of this target are as follows:</p> <p>Boster Bio's internal QC testing used:</p> <p>PD-L1 antibody can be used for detection of PD-L1 by Western blot at 0.25 - 0.5 ug/mL. Antibody can also be used for immunohistochemistry starting at 2 - 5 ug/mL. For immunofluorescence start at 5 ug/mL.</p> <p>Antibody validated: Western Blot in human samples; Immunohistochemistry in human samples; Immunocytochemistry in human samples; Immunofluorescence in human samples and Flow Cytometry in mouse samples. All other applications and species not yet tested. Optimal dilutions for each application should be determined by the researcher.</p>

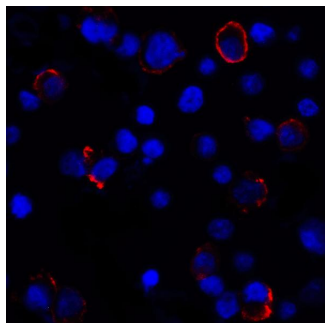
## Anti-PDL1 CD274 Monoclonal Antibody [4F2] (M00109-2) Images



Western blot analysis of PD-L1 in overexpressing HEK293 cells PD-L1 antibody at 0.25 and 0.5 ug/ml

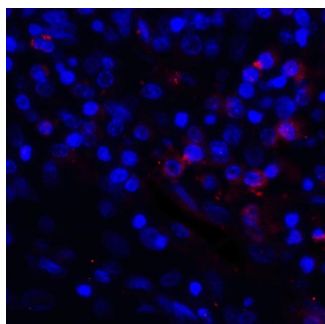


Immunocytochemistry of PD-L1 in transfected HEK293 cells with PD-L1 antibody at 1 ug/mL. Lower left: Immunocytochemistry in transfected HEK293 cells with control mouse IgG antibody at 1 ug/mL.



Immunofluorescence of PD-L1 in transfected HEK293 cells with PD-L1 antibody at 2 ug/mL.

Red: PDL1 Antibody [4F2] (RF16031)  
Blue: DAPI staining

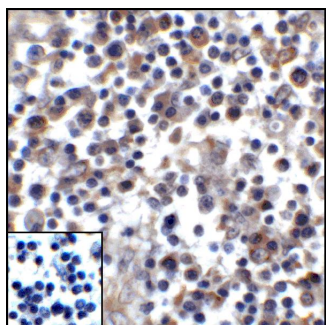
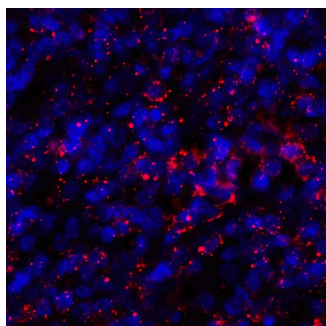


Immunofluorescence of PD-L1 in human stomach carcinoma tissue with PD-L1 antibody at 2 ug/mL.

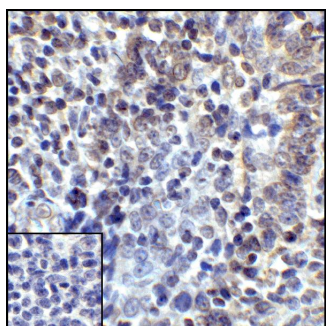
Red: PDL1 Antibody [4F2] (RF16031)  
Blue: DAPI staining

Immunofluorescence of PD-L1 in human tonsil tissue with PD-L1 antibody at 2 ug/mL.

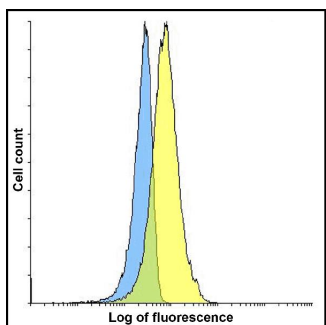
Red: PDL1 Antibody [4F2] (M00109-2)  
Blue: DAPI staining



Immunohistochemistry of PD-L1 in human stomach carcinoma tissue with PD-L1 antibody at 5 ug/mL.



Immunohistochemistry of PD-L1 in human tonsil tissue with PD-L1 antibody at 5 ug/mL.



Flow cytometry analysis of PD-L1 overexpressing HEK293 cells using PD-L1 antibody and control mouse IgG antibody at 10 ug/ml. Blue: Untransfected HEK293 cells. Yellow: PD-L1 overexpressing HEK293 cells.

## Submit a product review to Biocompare.com

Submit a review of this product to Biocompare.com to receive a \$20 Amazon.com giftcard! Your reviews help your fellow scientists make the right decisions. Thank you for your contribution.



Anti-PDL1 CD274 Monoclonal Antibody [4F2]