

Anti-B7-H1/PD-L1/CD274 Reference Antibody (atezolizumab)

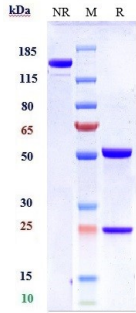
Catalog Number: M00109-6

Overview

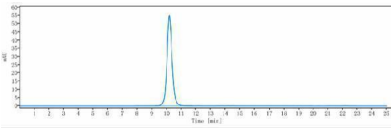
Product Name	Anti-B7-H1/PD-L1/CD274 Reference Antibody (atezolizumab)
Reactive Species	Cynomolgus monkey, Human
Description	Boster Bio Anti-B7-H1/PD-L1/CD274 Reference Antibody (atezolizumab) (Catalog # M00109-6). Tested in Flow Cytometry, ELISA, FTA. This antibody reacts with Cynomolgus monkey, Human. Endotoxin: < 0.005EU/ug,determined by LAL method. Expression system: CHO Cell
Application	ELISA, Flow Cytometry, Functional Assay, Kinetics
Clonality	Monoclonal
Storage Instructions	Maintain refrigerated at 2-8°C for up to 2 weeks. For long-term storage, aliquot and store at -20°C to avoid repeated freeze-thaw cycles.
Uniprot ID	Q9NZQ7

Technical Details

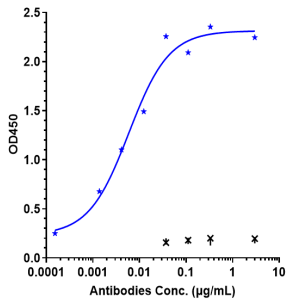
Anti-B7-H1/PD-L1/CD274 Reference Antibody (atezolizumab) (M00109-6) Images



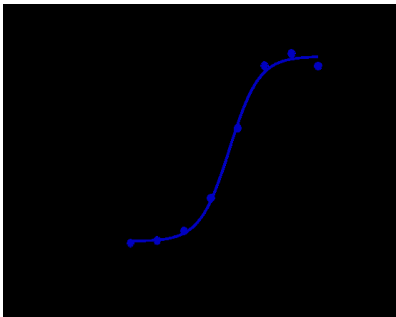
Anti-B7-H1/PD-L1/CD274 Reference Antibody (atezolizumab) on SDS-PAGE under reducing (R) condition. The gel was stained with Coomassie Blue. The purity of the protein is greater than 95%



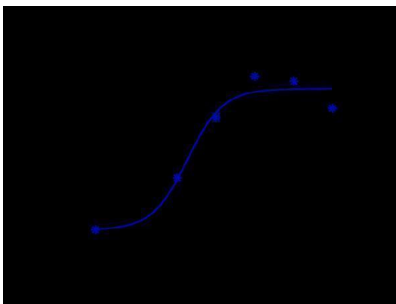
The purity of Anti-B7-H1/PD-L1/CD274 Reference Antibody (atezolizumab) is more than 100%



Immobilized human PD L1 His at 2 μg/mL can bind Anti-B7-H1/PD-L1/CD274 Reference Antibody (atezolizumab)

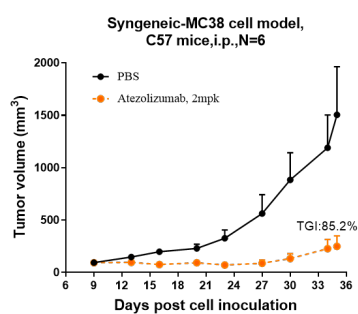


Human PD-L1 CHO-K cells were stained with Anti-B7-H1/PD-L1/CD274 Reference Antibody (atezolizumab) and negative control protein respectively



The endocytosis ratio atezolizumab by HCC827 increased with the increase of antibody concentration

Atezolizumab inhibited the tumor growth of MC38 on C57BL/6N mice. The result showed significant anti-tumor



effects

Submit a product review to Biocompare.com

Submit a review of this product to Biocompare.com to receive a \$20 Amazon.com giftcard! Your reviews help your fellow scientists make the right decisions. Thank you for your contribution.



Anti-B7-H1/PD-L1/CD274 Reference Antibody (atezolizumab)

For Research Use Only. Not for use in diagnostic procedures.