

## Anti-SP1 Antibody

Catalog Number: M00110-1

### About SP1

Transcription factor that can activate or repress transcription in response to physiological and pathological stimuli. Binds with high affinity to GC-rich motifs and regulates the expression of a large number of genes involved in a variety of processes such as cell growth, apoptosis, differentiation and immune responses. Highly regulated by post-translational modifications (phosphorylations, sumoylation, proteolytic cleavage, glycosylation and acetylation). Binds also the PDGFR- alpha G-box promoter. May have a role in modulating the cellular response to DNA damage. Implicated in chromatin remodeling. Plays a role in the recruitment of SMARCA4/BRG1 on the c-FOS promoter. Plays an essential role in the regulation of FE65 gene expression. In complex with ATF7IP, maintains telomerase activity in cancer cells by inducing TERT and TERC gene expression.

### Overview

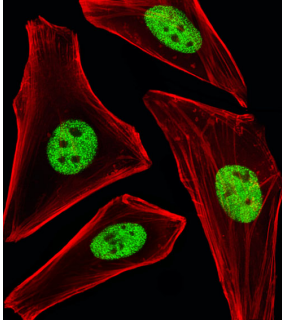
|                      |  |
|----------------------|--|
| Product Name         | Anti-SP1 Antibody  |
| Reactive Species     | Human  |
| Description          | Boster Bio Anti-SP1 Antibody (Catalog # M00110-1). Tested in IF, Flow Cytometry, WB application(s). This antibody reacts with Human.     |
| Application          | Flow Cytometry, IF, WB   |
| Clonality            | Monoclonal 1326CT463.109.176   |
| Formulation          | Purified monoclonal antibody supplied in PBS with 0.09% (W/V) sodium azide.  |
| Storage Instructions | Maintain refrigerated at 2-8°C for up to 2 weeks. For long-term storage, store at -20°C in small aliquots to prevent freeze-thaw cycles. |
| Host                 | Mouse  |
| Uniprot ID           | P08047   |

### Technical Details

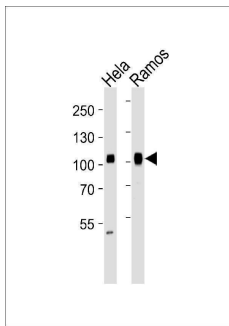
|                            |  |
|----------------------------|--|
| Immunogen                  | This SP1 antibody is generated from a mouse immunized with a recombination protein from the human SP1. |
| Predicted Reactive Species | Bovine, Mouse  |
| Isotype                    | IgG1,kappa   |
| Purification               | This antibody is purified through a protein G column, followed by dialysis against PBS.                |
| Suggested Dilutions        | IF: 1:25<br>WB: 1:1000<br>FC: 1:25   |



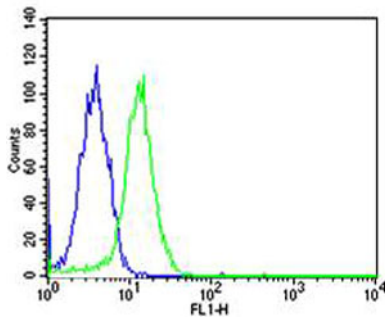
## Anti-SP1 Antibody (M00110-1) Images



Fluorescent image of HeLa cells stained with SP1 Antibody. M00110-1 was diluted at 1:25 dilution. An Alexa Fluor® 488-conjugated goat anti-mouse IgG at 1:400 dilution was used as the secondary antibody (green). Cytoplasmic actin was counterstained with Alexa Fluor® 555 conjugated with Phalloidin (red).



Western blot analysis of lysates from HeLa, Ramos cell line (from left to right), using SP1 Antibody (Cat. #M00110-1). M00110-1 was diluted at 1:1000 at each lane. A goat anti-mouse IgG H&L (HRP) at 1:3000 dilution was used as the secondary antibody. Lysates at 35ug per lane.



Flow cytometric analysis of HeLa cells using SP1 Antibody (green, Cat#M00110-1) compared to an isotype control of mouse IgG1 (blue). M00110-1 was diluted at 1:25 dilution. An Alexa Fluor® 488 goat anti-mouse IgG at 1:400 dilution was used as the secondary antibody.

### Submit a product review to [Biocompare.com](https://www.biocompare.com)

Submit a review of this product to [Biocompare.com](https://www.biocompare.com) to receive a \$20 Amazon.com giftcard! Your reviews help your fellow scientists make the right decisions. Thank you for your contribution.



Anti-SP1 Antibody

For Research Use Only. Not for use in diagnostic procedures.