

## Anti-SP1 Rabbit Monoclonal Antibody

Catalog Number: M00110-3

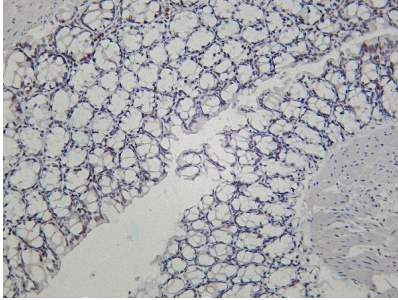
### Overview

Product Name	Anti-SP1 Rabbit Monoclonal Antibody
Reactive Species	Human
Description	This Recombinant Rabbit Monoclonal Antibody detects endogenous levels of SP1 protein. Validated for research with WB,IHC,IF,IP,ELISA applications. Anti SP1 is reactive for Human samples
Application	ELISA, IP, IF, IHC, WB
Clonality	Monoclonal
Formulation	PBS, 50% glycerol, 0.05% Proclin 300, 0.05% stabilizing protein This antibody is supplied in a stabilized formulation. Compatibility with conjugation reactions depends on the chemistry of the conjugation method used. For conjugation methods that are not compatible with the stabilizing components present in this formulation, a carrier-free antibody format is required.
Storage Instructions	Store at -20°C/1 year
Host	Rabbit
Uniprot ID	P08047

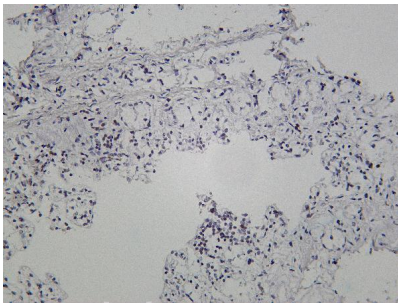
### Technical Details

Isotype	IgG, Kappa
Purification	Protein A
Suggested Dilutions	IHC 1:200-1:1000 WB 1:1000-1:5000 IF 1:200-1:1000 ELISA 1:5000-1:20000 IP 1:50-1:200

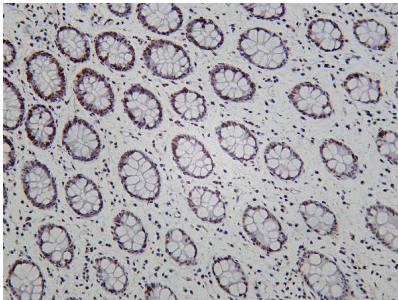
## Anti-SP1 Rabbit Monoclonal Antibody (M00110-3) Images



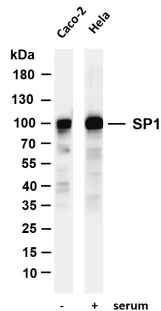
Mouse colon was stained with Anti-SP1 rabbit antibody



Rat colon was stained with Anti-SP1 rabbit antibody



Human colon was stained with Anti-SP1 rabbit antibody



Various whole cell lysates were separated by 4-20% SDS-PAGE, and the membrane was blotted with anti-SP1 antibody. The HRP-conjugated Goat anti-Rabbit IgG(H + L) antibody was used to detect the antibody. Lane 1: Caco-2 Lane 2: HeLa treated with serum for 30 minutes Predicted band size: 100kDa Observed band size: 100kDa

**Submit a product review to Biocompare.com**

Submit a review of this product to Biocompare.com to receive a \$20 Amazon.com giftcard! Your reviews help your fellow scientists make the right decisions. Thank you for your contribution.



For Research Use Only. Not for use in diagnostic procedures.