

## Anti-IRF7 Rabbit Monoclonal Antibody

Catalog Number: M00115

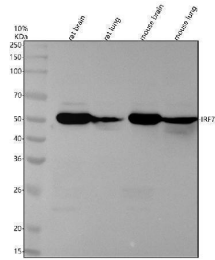
### Overview

Product Name	Anti-IRF7 Rabbit Monoclonal Antibody
Reactive Species	Human, Mouse, Rat
Description	Boster Bio Anti-IRF7 Rabbit Monoclonal Antibody catalog # M00115. Tested in WB, IHC, ICC/IF, IP, Flow Cytometry applications. This antibody reacts with Human, Mouse, Rat.
Application	Flow Cytometry, IP, IF, IHC, ICC, WB
Clonality	Monoclonal FAH-9
Formulation	Rabbit IgG in stabilizing components, phosphate buffered saline, pH 7.4, 150mM NaCl, 0.02% sodium azide and 50% glycerol. *This antibody is supplied in a stabilized formulation. Compatibility with conjugation reactions depends on the chemistry of the conjugation method used. For conjugation methods that are not compatible with the stabilizing components present in this formulation, a carrier-free antibody format is required.
Storage Instructions	Store at -20°C for one year. For short term storage and frequent use, store at 4°C for up to one month. Avoid repeated freeze-thaw cycles.
Host	Rabbit
Uniprot ID	Q92985

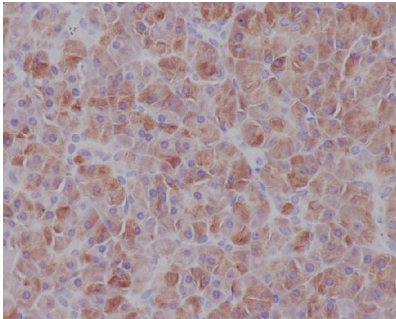
### Technical Details

Immunogen	A synthesized peptide derived from human IRF7
Isotype	Rabbit IgG
Form	Liquid
Concentration	0.5mg/ml
Purification	Affinity-chromatography
Suggested Dilutions	WB 1:500-2000 IHC 1:50-200 ICC/IF 1:50-200 IP 1:20 FC 1:20

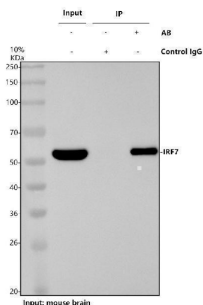
## Anti-IRF7 Rabbit Monoclonal Antibody (M00115) Images



Western blot analysis of IRF7 using anti-IRF7 antibody (M00115). Electrophoresis was performed on a 10% SDS-PAGE gel at 80V (Stacking gel) / 120V (Resolving gel) for 2 hours. The sample well of each lane was loaded with 30 ug of sample under reducing conditions. Lane 1: rat brain tissue lysates, Lane 2: rat lung tissue lysates, Lane 3: mouse brain tissue lysates, Lane 4: mouse lung tissue lysates. After electrophoresis, proteins were transferred to a nitrocellulose membrane at 150 mA for 50-90 minutes. Blocked the membrane with 5% non-fat milk/TBS for 1.5 hour at RT. The membrane was incubated with rabbit anti-IRF7 antigen affinity purified monoclonal antibody (M00115) at 1:500 overnight at 4°C, then washed with TBS-0.1%Tween 3 times with 5 minutes each and probed with a goat anti-rabbit IgG-HRP secondary antibody at a dilution of 1:5000 for 1.5 hour at RT. The signal is developed using an ECL Plus Western Blotting Substrate (Catalog # AR1196-200) with Tanon 5200 system. A specific band was detected for IRF7 at approximately 54 kDa. The expected band size for IRF7 is at 54 kDa.



Immunohistochemical analysis of paraffin-embedded human pancreas, using IRF7 Antibody.



Immunoprecipitation analysis of IRF7 using anti-IRF7 (M00115). Mouse brain lysates were prepared in RIPA with protease inhibitors. Anti-IRF7 (M00115) was pre-bound to Protein A+G magnetic beads and incubated with the lysates; a normal rabbit IgG IP ran in parallel. Beads were washed with TBST and the bound proteins were eluted with SDS sample buffer by heating. Proteins were separated on a 10% SDS-PAGE (80 V stacking / 120 V resolving) and transferred to NC membrane ( $\approx$ 150 mA, 50-90 min). Membranes were blocked with 5% milk/TBST, probed with M00115 (o/n, 4 °C), then with HRP anti-rabbit light-chain IgG (BM2007), and developed by ECL. Lane 1: Input (10% of starting lysate), Lane 2: Control IgG IP, Lane 3: IRF7 IP (M00115). A  $\sim$ 54 kDa band corresponding to IRF7 was detected in the IRF7 IP and positive-control lanes, while the IgG control showed no specific band.

Submit a product review to [Biocompare.com](https://www.biocompare.com)

Submit a review of this product to [Biocompare.com](https://www.biocompare.com) to receive a \$20 Amazon.com giftcard! Your



reviews help your fellow scientists make the right decisions. Thank you for your contribution.

**Anti-IRF7 Rabbit Monoclonal Antibody**

**For Research Use Only. Not for use in diagnostic procedures.**