

Anti-EP300 Antibody (Monoclonal, 34E94)

Catalog Number: M00117-1

About EP300

E1A binding protein p300 also known as EP300 or p300 is a protein that in humans is encoded by the EP300 gene. The EP300 gene is located on the long (q) arm of the human chromosome 22 at position 13.2. This protein regulates the activity of many genes in tissues throughout the body. It plays an essential role in regulating cell growth and division, prompting cells to mature and assume specialized functions (differentiate), and preventing the growth of cancerous tumors. The EP300 protein appears to be critical for normal development before and after birth. It carries out its function by activating transcription. In addition, the protein functions as histone acetyltransferase that regulates transcription via chromatin remodeling, and is important in the processes of cell proliferation and differentiation. EP300 also mediates cAMP-gene regulation by binding specifically to phosphorylated CREB protein.

Overview

Product Name	Anti-EP300 Antibody (Monoclonal, 34E94)
Reactive Species	Human, Mouse, Rat
Description	Boster Bio Anti-EP300 Antibody (Monoclonal, 34E94) catalog # M00117-1. Tested in WB, IHC, ICC/IF, IP, Flow Cytometry applications. This antibody reacts with Human, Mouse, Rat.
Application	Flow Cytometry, IP, IF, IHC, ICC, WB
Clonality	Monoclonal 34E94
Formulation	Rabbit IgG in stabilizing components, phosphate buffered saline, pH 7.4, 150mM NaCl, 0.02% sodium azide and 50% glycerol. This antibody is supplied in a stabilized formulation. Compatibility with conjugation reactions depends on the chemistry of the conjugation method used. For conjugation methods that are not compatible with the stabilizing components present in this formulation, a carrier-free antibody format is required.
Storage Instructions	Store at -20°C for one year. For short term storage and frequent use, store at 4°C for up to one month. Avoid repeated freeze-thaw cycles.
Host	Rabbit
Uniprot ID	Q09472

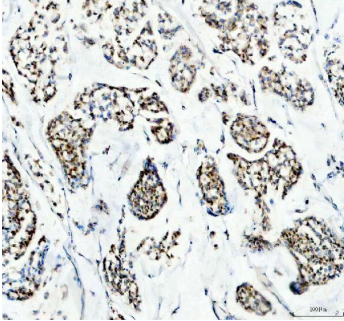
Technical Details

Immunogen	Recombinant protein within human KAT3B / p300 aa 53-348.
Form	Liquid
Concentration	500 ug/ml
Purification	Protein A affinity purified.

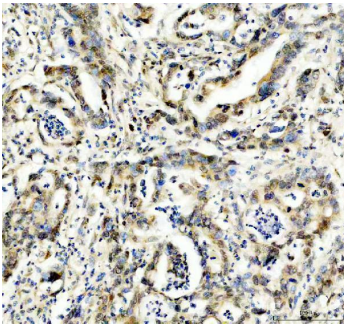
Suggested Dilutions

Western blot, 1:500-2000
Immunohistochemistry, 1:50-200
Immunocytochemistry/Immunofluorescence, 1:50-200
ImmunoPrecipitation, 1:50
Flow Cytometry (Fixed), 1:50-200

Anti-EP300 Antibody (Monoclonal, 34E94) (M00117-1) Images



IHC analysis of EP300 using anti-EP300 antibody (M00117-1). EP300 was detected in a paraffin-embedded section of human breast cancer tissue. Heat mediated antigen retrieval was performed in EDTA buffer (pH 8.0, epitope retrieval solution). The tissue section was blocked with 10% goat serum. The tissue section was then incubated with 1:200 rabbit anti-EP300 Antibody (M00117-1) overnight at 4°C. Peroxidase Conjugated Goat Anti-rabbit IgG was used as secondary antibody and incubated for 30 minutes at 37°C. The tissue section was developed using HRP Conjugated Rabbit IgG Super Vision Assay Kit (Catalog # SV0002) with DAB as the chromogen.



IHC analysis of EP300 using anti-EP300 antibody (M00117-1). EP300 was detected in a paraffin-embedded section of human pancreas cancer tissue. Heat mediated antigen retrieval was performed in EDTA buffer (pH 8.0, epitope retrieval solution). The tissue section was blocked with 10% goat serum. The tissue section was then incubated with 1:200 rabbit anti-EP300 Antibody (M00117-1) overnight at 4°C. Peroxidase Conjugated Goat Anti-rabbit IgG was used as secondary antibody and incubated for 30 minutes at 37°C. The tissue section was developed using HRP Conjugated Rabbit IgG Super Vision Assay Kit (Catalog # SV0002) with DAB as the chromogen.

Submit a product review to [Biocompare.com](https://www.biocompare.com)

Submit a review of this product to [Biocompare.com](https://www.biocompare.com) to receive a \$20 Amazon.com giftcard! Your reviews help your fellow scientists make the right decisions. Thank you for your contribution.



Anti-EP300 Antibody (Monoclonal, 34E94)

For Research Use Only. Not for use in diagnostic procedures.