

## Anti-Mouse Klf4 Antibody (Center)

Catalog Number: M00120-1

### About Klf4

Transcription factor; can act both as activator and as repressor. Binds the 5'-CACCC-3' core sequence. Binds to the promoter region of its own gene and can activate its own transcription. Regulates the expression of key transcription factors during embryonic development. Plays an important role in maintaining embryonic stem cells, and in preventing their differentiation. Required for establishing the barrier function of the skin and for postnatal maturation and maintenance of the ocular surface. Involved in the differentiation of epithelial cells and may also function in skeletal and kidney development. Contributes to the down-regulation of p53/TP53 transcription (By similarity).

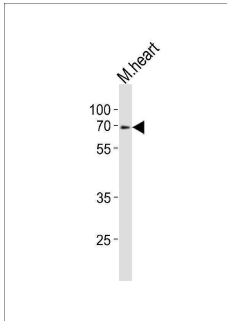
### Overview

Product Name	Anti-Mouse Klf4 Antibody (Center)
Reactive Species	Mouse
Description	Boster Bio Anti-Mouse Klf4 Antibody (Center) (Catalog # M00120-1). Tested in WB, Flow Cytometry application(s). This antibody reacts with Mouse.
Application	Flow Cytometry, WB
Clonality	Polyclonal
Formulation	Purified polyclonal antibody supplied in PBS with 0.09% (W/V) sodium azide.
Storage Instructions	Maintain refrigerated at 2-8°C for up to 2 weeks. For long-term storage, store at -20°C in small aliquots to prevent freeze-thaw cycles.
Host	Rabbit
Uniprot ID	Q60793

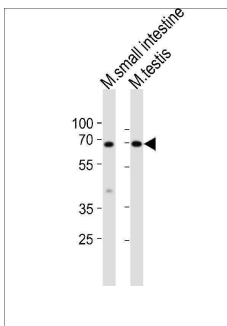
### Technical Details

Immunogen	This Mouse Klf4 antibody is generated from a rabbit immunized with a KLH conjugated synthetic peptide between 321-354 amino acids from the Central region of mouse Klf4.
Predicted Reactive Species	Bovine, Mouse
Isotype	Rabbit IgG
Purification	This antibody is purified through a protein A column, followed by peptide affinity purification.
Suggested Dilutions	WB: 1:1000 FC: 1:25

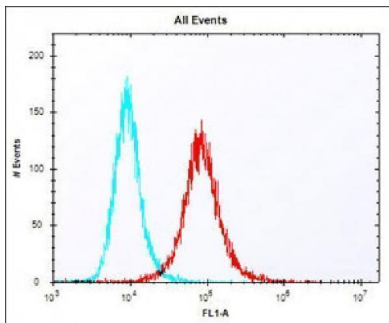
## Anti-Mouse Klf4 Antibody (Center) (M00120-1) Images



Western blot analysis of lysate from mouse heart tissue lysate, using Klf4 Antibody (Center). M00120-1 was diluted at 1:1000. A goat anti-rabbit IgG H&L (HRP) at 1:10000 dilution was used as the secondary antibody. Lysate at 20ug.



Western blot analysis of lysates from mouse small intestine, mouse testis tissue lysate (from left to right), using Klf4 Antibody (Center). M00120-1 was diluted at 1:1000 at each lane. A goat anti-rabbit IgG H&L(HRP) at 1:10000 dilution was used as the secondary antibody. Lysates at 20ug per lane.



Overlay histogram showing NIH/3T3 cells stained with M00120-1 (red line). The cells were fixed with 2% paraformaldehyde (10 min) and then permeabilized with 90% methanol for 10 min. The cells were then incubated in 2% bovine serum albumin to block non-specific protein-protein interactions followed by the antibody (M00120-1, 1:25 dilution) for 60 min at 37°C. The secondary antibody used was Alexa Fluor® 488 goat anti-rabbit IgG (H+L) at 1/400 dilution for 40 min at 37°C. Isotype control antibody (blue line) was rabbit IgG1 (1g/1x10<sup>6</sup> cells) used under the same conditions. Acquisition of >10,000 events was performed.

### Submit a product review to Biocompare.com

Submit a review of this product to Biocompare.com to receive a \$20 Amazon.com giftcard! Your reviews help your fellow scientists make the right decisions. Thank you for your contribution.



Anti-Mouse Klf4 Antibody (Center)

For Research Use Only. Not for use in diagnostic procedures.