

Anti-PARP PARP1 Rabbit Monoclonal Antibody

Catalog Number: M00122

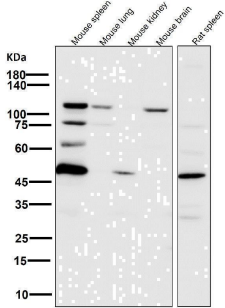
Overview

Product Name	Anti-PARP PARP1 Rabbit Monoclonal Antibody
Reactive Species	Human, Mouse, Rat
Description	Boster Bio Anti-PARP PARP1 Rabbit Monoclonal Antibody catalog # M00122. Tested in WB, IHC, ICC/IF applications. This antibody reacts with Human, Mouse, Rat.
Application	IF, IHC, ICC, WB
Clonality	Monoclonal ABCG-16
Formulation	Rabbit IgG in stabilizing components, phosphate buffered saline, pH 7.4, 150mM NaCl, 0.02% sodium azide and 50% glycerol. *This antibody is supplied in a stabilized formulation. Compatibility with conjugation reactions depends on the chemistry of the conjugation method used. For conjugation methods that are not compatible with the stabilizing components present in this formulation, a carrier-free antibody format is required.
Storage Instructions	Store at -20°C for one year. For short term storage and frequent use, store at 4°C for up to one month. Avoid repeated freeze-thaw cycles.
Host	Rabbit
Uniprot ID	P09874

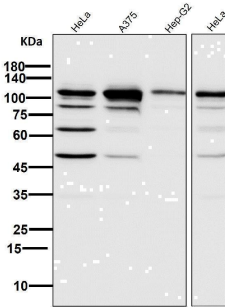
Technical Details

Immunogen	A synthesized peptide derived from human PARP
Isotype	Rabbit IgG
Form	Liquid
Concentration	0.5mg/ml
Purification	Affinity-chromatography
Suggested Dilutions	WB 1:500-1:1000 IHC 1:100-1:500 ICC/IF 1:50-1:200

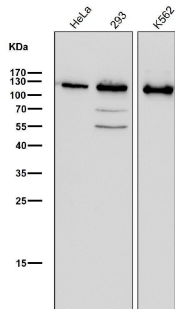
Anti-PARP PARP1 Rabbit Monoclonal Antibody (M00122) Images



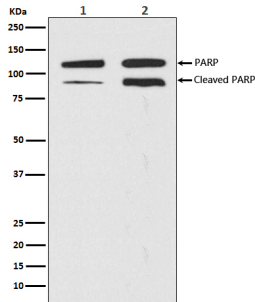
All lanes use the Antibody at 1:6K dilution for 1 hour at room temperature.



All lanes use the Antibody at 1:6K dilution for 1 hour at room temperature.

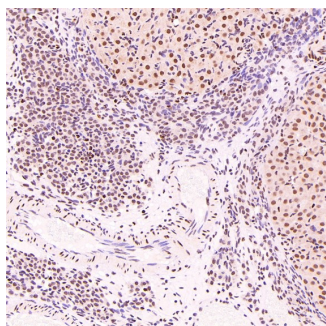


All lanes use the Antibody at 1:1W dilution for 1 hour at room temperature.

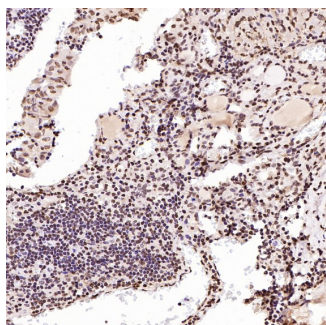


Western blot analysis of PARP expression in (1) HeLa cell lysate; (2) HeLa cell lysate treated with staurosporine.

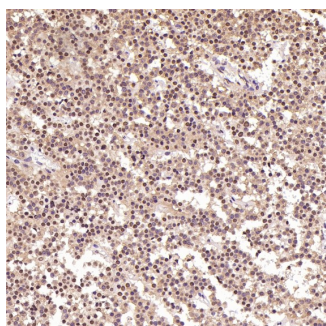
Immunohistochemical analysis of paraffin-embedded Rat ovary, using the Antibody at 1:300 dilution.



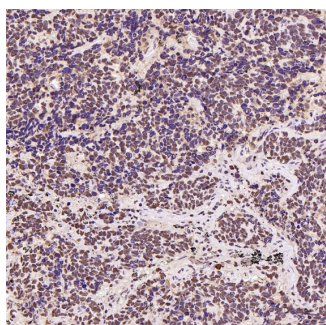
Immunohistochemical analysis of paraffin-embedded Human thyroid cancer, using the Antibody at 1:150 dilution.



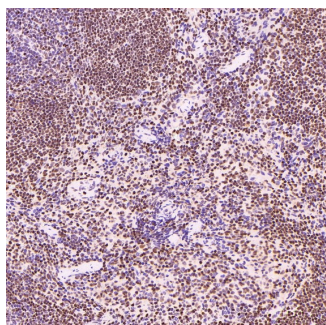
Immunohistochemical analysis of paraffin-embedded Human pituitary tumor, using the Antibody at 1:500 dilution.

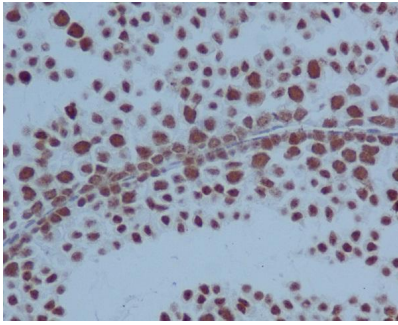


Immunohistochemical analysis of paraffin-embedded Human small cell lung cancer, using the Antibody at 1:500 dilution.

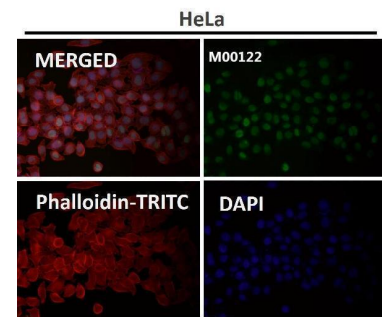


Immunohistochemical analysis of paraffin-embedded Mouse spleen, using the Antibody at 1:300 dilution.

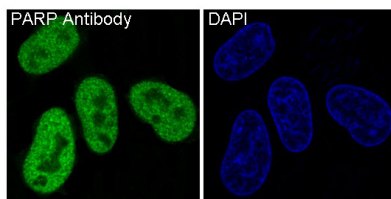




Immunohistochemical analysis of paraffin-embedded mouse testis, using PARP Antibody.



Immunofluorescent analysis using the Antibody at 1:50 dilution.



Immunofluorescent analysis of HeLa cells, using PARP Antibody .

2 Publications Citing This Product

1. PubMed ID: 33281970, Wang P,Wang C,Liu C. Antitumor effects of dioscin in A431 cells via adjusting ATM/p53-mediated cell apoptosis, DNA damage and migration. Oncol Lett. 2021 Jan;21(1):59.doi:10.3892/ol.2020.12321.Epub 2020 Nov 19.PMID:33281970;PMCID:PMC7709553.
2. PubMed ID: 21151457, Li Q, Li Z, Xu Xy, Guo YI, Du F. Int J Mol Sci. 2010 Nov 16;11(11):4580-90. Doi: 10.3390/Ijms11114580. Neuroprotective Properties Of Picoside li In A Rat Model Of Focal Cerebral Ischemia.

Visit bosterbio.com/anti-parp-rabbit-monoclonal-antibody-m00122-boster.html to see all 2 publications.

Submit a product review to Biocompare.com

Submit a review of this product to Biocompare.com to receive a \$20 Amazon.com giftcard! Your reviews help your fellow scientists make the right decisions. Thank you for your contribution.



Anti-PARP PARP1 Rabbit Monoclonal Antibody

For Research Use Only. Not for use in diagnostic procedures.