

Anti-Cleaved PARP PARP1 Rabbit Monoclonal Antibody

Catalog Number: M00122-2

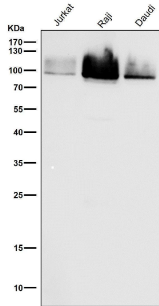
Overview

Product Name	Anti-Cleaved PARP PARP1 Rabbit Monoclonal Antibody
Reactive Species	Human
Description	Boster Bio Anti-Cleaved PARP PARP1 Rabbit Monoclonal Antibody catalog # M00122-2. Tested in WB, ICC/IF, IP, Flow Cytometry applications. This antibody reacts with Human.
Application	Flow Cytometry, IP, IF, ICC, WB
Clonality	Monoclonal BHH-16
Formulation	Rabbit IgG in stabilizing components, phosphate buffered saline, pH 7.4, 150mM NaCl, 0.02% sodium azide and 50% glycerol. *This antibody is supplied in a stabilized formulation. Compatibility with conjugation reactions depends on the chemistry of the conjugation method used. For conjugation methods that are not compatible with the stabilizing components present in this formulation, a carrier-free antibody format is required.
Storage Instructions	Store at -20°C for one year. For short term storage and frequent use, store at 4°C for up to one month. Avoid repeated freeze-thaw cycles.
Host	Rabbit
Uniprot ID	P09874

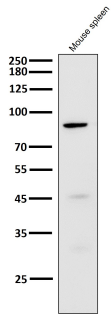
Technical Details

Immunogen	A synthesized peptide derived from human Cleaved PARP
Isotype	Rabbit IgG
Form	Liquid
Concentration	0.5mg/ml
Purification	Affinity-chromatography
Suggested Dilutions	WB 1:500-1:2000 ICC/IF 1:50-1:200 IP 1:50 FC 1:50

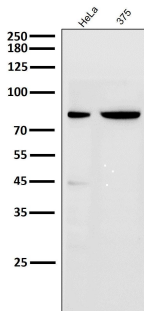
Anti-Cleaved PARP PARP1 Rabbit Monoclonal Antibody (M00122-2) Images



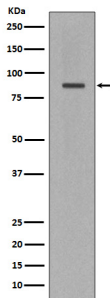
All lanes use the Antibody at 1:1K dilution for 1 hour at room temperature.



All lanes use the Antibody at 1:6K dilution for 1 hour at room temperature.

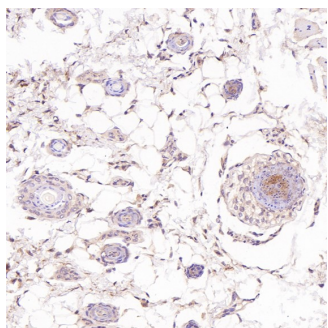


All lanes use the Antibody at 1:6K dilution for 1 hour at room temperature.

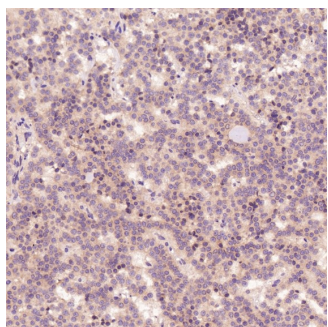


Western blot analysis of Cleaved PARP expression in Jurkat cell lysate.

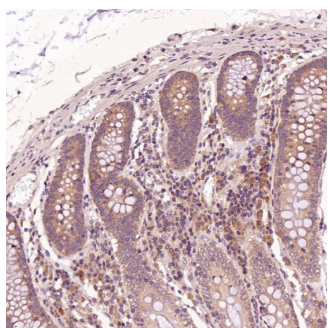
Immunohistochemical analysis of paraffin-embedded Rat skin, using the Antibody at 1:50 dilution.



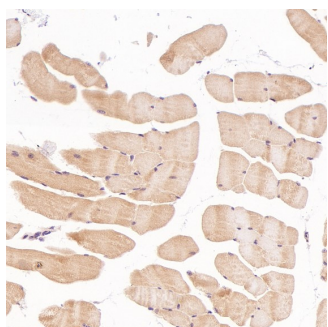
Immunohistochemical analysis of paraffin-embedded Human pituitary tumor, using the Antibody at 1:50 dilution.



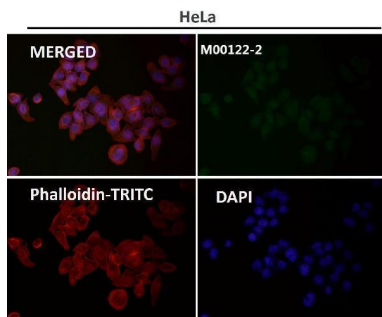
Immunohistochemical analysis of paraffin-embedded Human colon, using the Antibody at 1:50 dilution.

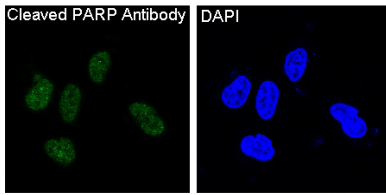


Immunohistochemical analysis of paraffin-embedded Mouse skeletal muscle - gastrocnemius , using the Antibody at 1:50 dilution.



Immunofluorescent analysis using the Antibody at 1:50 dilution.





Immunofluorescent analysis of HeLa cells, using Cleaved PARP Antibody .

2 Publications Citing This Product

1. PubMed ID: 33382670, Chen H,Sheng H,Zhao Y,Zhu G.Piperine Inhibits Cell Proliferation and Induces Apoptosis of Human Gastric Cancer Cells by Downregulating Phosphatidylinositol 3-Kinase (PI3K)/Akt Pathway.Med Sci Monit.2020 Dec 31;26:e928403.doi:10.12659/MSM.928403.PMID:33382

2. PubMed ID: 33281970, Wang P,Wang C,Liu C. Antitumor effects of dioscin in A431 cells via adjusting ATM/p53-mediated cell apoptosis, DNA damage and migration. Oncol Lett. 2021 Jan;21(1):59.doi:10.3892/ol.2020.12321.Epub 2020 Nov 19.PMID:33281970;PMCID:PMC7709553.

Visit bosterbio.com/anti-cleaved-parp-rabbit-monoclonal-antibody-m00122-2-boster.html to see all 2 publications.

Submit a product review to Biocompare.com

Submit a review of this product to Biocompare.com to receive a \$20 Amazon.com giftcard! Your reviews help your fellow scientists make the right decisions. Thank you for your contribution.



Anti-Cleaved PARP PARP1 Rabbit Monoclonal Antibody

For Research Use Only. Not for use in diagnostic procedures.