

Anti-PCNA Rabbit Monoclonal Antibody

Catalog Number: M00125-1

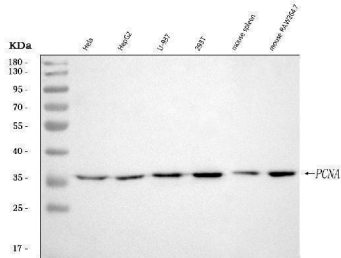
Overview

Product Name	Anti-PCNA Rabbit Monoclonal Antibody
Reactive Species	Human, Mouse, Rat
Description	Boster Bio Anti-PCNA Rabbit Monoclonal Antibody catalog # M00125-1. Tested in WB, IHC, ICC/IF, IP, Flow Cytometry applications. This antibody reacts with Human, Mouse, Rat.
Application	Flow Cytometry, IP, IF, IHC, ICC, WB
Clonality	Monoclonal DO-16
Formulation	Rabbit IgG in stabilizing components, phosphate buffered saline, pH 7.4, 150mM NaCl, 0.02% sodium azide and 50% glycerol. *This antibody is supplied in a stabilized formulation. Compatibility with conjugation reactions depends on the chemistry of the conjugation method used. For conjugation methods that are not compatible with the stabilizing components present in this formulation, a carrier-free antibody format is required.
Storage Instructions	Store at -20°C for one year. For short term storage and frequent use, store at 4°C for up to one month. Avoid repeated freeze-thaw cycles.
Host	Rabbit
Uniprot ID	P12004

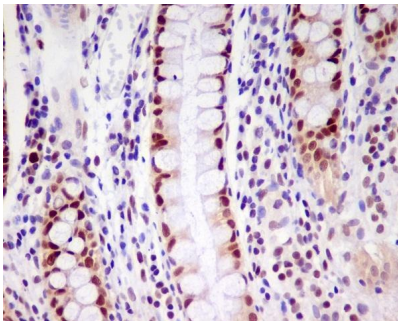
Technical Details

Immunogen	A synthesized peptide derived from human PCNA
Isotype	Rabbit IgG
Form	Liquid
Concentration	0.5mg/ml
Purification	Affinity-chromatography
Suggested Dilutions	WB 1:1000-5000 IHC 1:50-200 ICC/IF 1:50-200 IP 1:20 FC 1:20

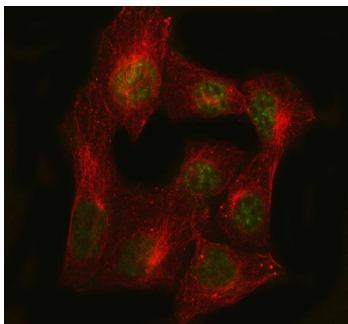
Anti-PCNA Rabbit Monoclonal Antibody (M00125-1) Images



Western blot analysis of PCNA using anti-PCNA antibody (M00125-1). Electrophoresis was performed on a 5-20% SDS-PAGE gel at 70V (Stacking gel) / 90V (Resolving gel) for 2-3 hours. The sample well of each lane was loaded with 30 ug of sample under reducing conditions. Lane 1: human HeLa whole cell lysates, Lane 2: human HepG2 whole cell lysates, Lane 3: human U-937 whole cell lysates, Lane 4: human 293T whole cell lysates, Lane 5: mouse spleen tissue lysates, Lane 6: rat RAW264.7 tissue lysates. After electrophoresis, proteins were transferred to a nitrocellulose membrane at 150 mA for 50-90 minutes. Blocked the membrane with 5% non-fat milk/TBS for 1.5 hour at RT. The membrane was incubated with rabbit anti-PCNA antigen affinity purified monoclonal antibody (Catalog # M00125-1) at 1:3000 overnight at 4°C, then washed with TBS-0.1%Tween 3 times with 5 minutes each and probed with a goat anti-rabbit IgG-HRP secondary antibody at a dilution of 1:5000 for 1.5 hour at RT. The signal is developed using an Enhanced Chemiluminescent detection (ECL) kit (Catalog # EK1002) with Tanon 5200 system. A specific band was detected for PCNA at approximately 36 kDa. The expected band size for PCNA is at 29 kDa.

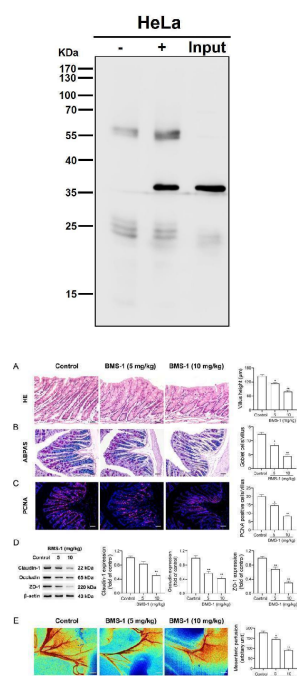


Immunohistochemical analysis of paraffin-embedded human colon, using PCNA Antibody.



IF analysis of PCNA using anti-PCNA antibody (M00125-1) and anti-Beta Tubulin antibody (M01857-3). PCNA was detected in immunocytochemical section of U2OS cell. Enzyme antigen retrieval was performed using IHC enzyme antigen retrieval reagent (AR0022) for 15 mins. The cells were blocked with 10% goat serum. And then incubated at 1:100 with rabbit anti-PCNA Antibody (M00125-1) and mouse anti-Beta Tubulin antibody (M01857-3) overnight at 4°C. DyLight®488 Conjugated Goat Anti-Rabbit IgG (BA1127) and DyLight550-conjugated Anti- mouse IgG Secondary Antibody (red)(Catalog#BA1133) were used as secondary antibody at 1:500 dilution and incubated for 30 minutes at 37°C. Visualize using a fluorescence microscope and filter sets appropriate for the label used.

Immunoprecipitate (IP) analysis using the Antibody at 1:50 dilution. (wb at 1:3K dilution)



BMS-1 induces intestinal barrier injury in mice with melanoma. In the B16F10 melanoma model, the mice were intraperitoneally administered with the PD-1/PD-L1 inhibitor BMS-1 (0, 5 and 10 mg/kg) every 2 days for 6 times (n = 10). A Representative images of hematoxylin and eosin (HE) staining of colonic tissues and corresponding quantification analysis. Scale bars, 100 μ m. B Representative images of Alcian blue-periodic acid-Schiff (ABPAS) of colonic tissues and corresponding quantification analysis. Scale bars, 100 μ m. C Representative images of proliferating cell nuclear antigen (PCNA) and corresponding quantification analysis. Scale bars, 100 μ m. D Representative western blot images of Claudin-1, Occludin and ZO-1 in colonic tissues and corresponding quantification analysis. E Representative images of laser Doppler analysis and corresponding quantification analysis. Scale bar, 2 mm. The values are presented as the mean \pm standard error of the mean. * P

63 Publications Citing This Product

1. PubMed ID: 31562866, Ma Q,Gu JT,Wang B,Feng J,Yang L,Kang XW,Duan P,Sun X,Liu PJ,Wang JC.PIGF signaling and macrophage repolarization contribute to the anti-neoplastic effect of metformin.Eur J Pharmacol.2019 Nov 15;863:172696.doi:10.1016/j.ejphar.2019.172696.Epub 2019 Sep 25.PMID:31562866.
2. PubMed ID: 33593403, Yi M,Zhang J,Li A,Niu M,Yan Y,Jiao Y,Luo S,Zhou P,Wu K.The construction, expression, and enhanced anti-tumor activity of YM101: a bispecific antibody simultaneously targeting TGF-beta and PD-L1.J Hematol Oncol.2021 Feb 16;14(1):27.doi:10.1186/s13045-021-0104
3. PubMed ID: 33492563, Zhang F,Zhang L,He L,Cao M,Yang Y,Duan X,Shi J,Liu K.A PITX2 splice-site mutation in a family with Axenfeld-Rieger syndrome leads to decreased expression of nuclear PITX2 protein.Int Ophthalmol.2021 Jan 25.doi:10.1007/s10792-021-01704-5.Epub ahead of prin

Visit [bosterbio.com/anti-pcna-rabbit-monoclonal-antibody-m00125-1-boster.html](https://www.bosterbio.com/anti-pcna-rabbit-monoclonal-antibody-m00125-1-boster.html) to see all 63 publications.

Submit a product review to Biocompare.com

Submit a review of this product to Biocompare.com to receive a \$20 Amazon.com giftcard! Your reviews help your fellow scientists make the right decisions. Thank you for your contribution.



Anti-PCNA Rabbit Monoclonal Antibody

For Research Use Only. Not for use in diagnostic procedures.