

## Anti-Isocitrate dehydrogenase (IDH1) Mouse Monoclonal Antibody [Clone ID: OTI1D1]

Catalog Number: M00129

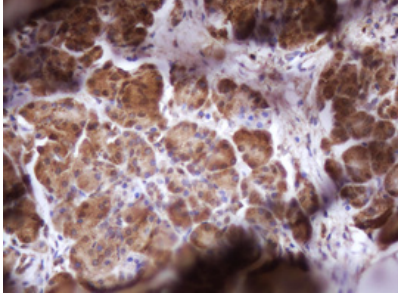
### Overview

Product Name	Anti-Isocitrate dehydrogenase (IDH1) Mouse Monoclonal Antibody [Clone ID: OTI1D1]
Reactive Species	Dog, Human, Monkey, Mouse, Rat
Description	Boster Bio IDH1 (Isocitrate Dehydrogenase 1) mouse monoclonal antibody, clone OTI1D1 (formerly 1D1). Catalog# M00129. Tested in IHC, WB. This antibody reacts with Human, Monkey, Mouse, Rat, Dog.
Conjugate	Unconjugated
Application	IHC, WB
Clonality	Monoclonal OTI1D1
Formulation	PBS (pH 7.3) containing 1% stabilizing protein, 50% glycerol and 0.02% sodium azide. This antibody is supplied in a stabilized formulation. Compatibility with conjugation reactions depends on the chemistry of the conjugation method used. For conjugation methods that are not compatible with the stabilizing components present in this formulation, a carrier-free antibody format is required.
Storage Instructions	Store at -20°C for one year. For short term storage and frequent use, store at 4°C for up to one month. Avoid repeated freeze-thaw cycles.
Host	Mouse
Uniprot ID	O75874

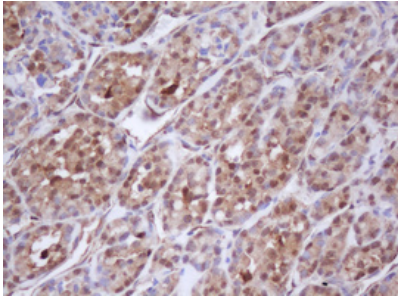
### Technical Details

Immunogen	Synthetic peptide around the R132 region of the human IDH conjugated to KLH
Isotype	IgG1
Concentration	1 mg/ml
Purification	Purified from mouse ascites fluids or tissue culture supernatant by affinity chromatography (protein A/G)
Suggested Dilutions	WB 1:500 IHC 1:150

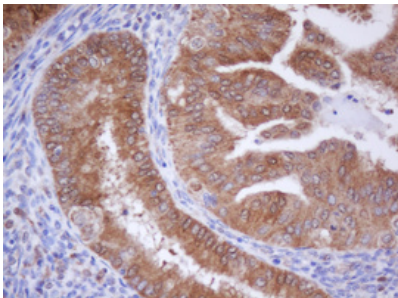
## Anti-Isocitrate dehydrogenase (IDH1) Mouse Monoclonal Antibody [Clone ID: OTI1D1] (M00129) Images



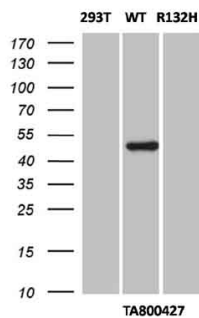
Immunohistochemical staining of paraffin-embedded Human pancreas tissue within the normal limits using anti-IDH1 mouse monoclonal antibody. (Heat-induced epitope retrieval by 10mM citric buffer)



Immunohistochemical staining of paraffin-embedded Carcinoma of Human thyroid tissue using anti-IDH1 mouse monoclonal antibody. (Heat-induced epitope retrieval by 10mM citric buffer)

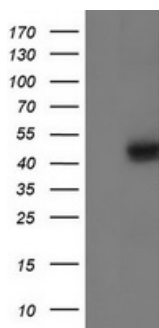


Immunohistochemical staining of paraffin-embedded Human endometrium tissue within the normal limits using anti-IDH1 mouse monoclonal antibody. (Heat-induced epitope retrieval by 10mM citric buffer)

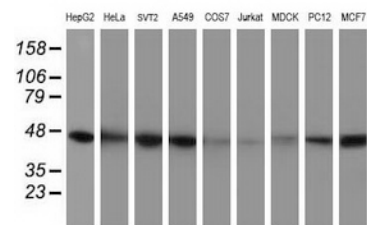


HEK293T cells were either not transfected (left lane "293T") or transfected with pCMV6-ENTRY IDH1 (wild type)

HEK293T cells were transfected with the pCMV6-ENTRY control (Left lane) or pCMV6-ENTRY IDH1 (Right lane) cDNA for 48 hrs and lysed. Equivalent amounts of cell lysates (5 ug per lane) were separated by SDS-PAGE and immunoblotted with anti-IDH1.



Western blot analysis of extracts (35ug) from 9 different cell lines by using anti-IDH1 monoclonal antibody (HepG2: human; HeLa: human; SVT2: mouse; A549: human; COS7: monkey; Jurkat: human; MDCK: canine; PC12: rat; MCF7: human).



## Submit a product review to Biocompare.com

Submit a review of this product to Biocompare.com to receive a \$20 Amazon.com giftcard! Your reviews help your fellow scientists make the right decisions. Thank you for your contribution.



Anti-Isocitrate dehydrogenase (IDH1) Mouse Monoclonal Antibody [Clone ID: OTI1D1]

For Research Use Only. Not for use in diagnostic procedures.