

## Anti-TLR2 Rabbit Monoclonal Antibody

Catalog Number: M00131

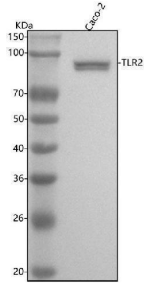
### Overview

Product Name	Anti-TLR2 Rabbit Monoclonal Antibody
Reactive Species	Human, Mouse, Rat
Description	Boster Bio Anti-TLR2 Rabbit Monoclonal Antibody catalog # M00131. Tested in WB application. This antibody reacts with Human, Mouse, Rat.
Application	WB
Clonality	Monoclonal ADH-20
Formulation	Rabbit IgG in stabilizing components, phosphate buffered saline, pH 7.4, 150mM NaCl, 0.02% sodium azide and 50% glycerol. *This antibody is supplied in a stabilized formulation. Compatibility with conjugation reactions depends on the chemistry of the conjugation method used. For conjugation methods that are not compatible with the stabilizing components present in this formulation, a carrier-free antibody format is required.
Storage Instructions	Store at -20°C for one year. For short term storage and frequent use, store at 4°C for up to one month. Avoid repeated freeze-thaw cycles.
Host	Rabbit
Uniprot ID	O60603

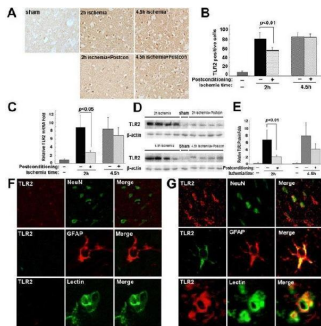
### Technical Details

Immunogen	A synthesized peptide derived from human TLR2
Isotype	Rabbit IgG
Form	Liquid
Concentration	0.5mg/ml
Purification	Affinity-chromatography
Suggested Dilutions	WB 1:500-2000

## Anti-TLR2 Rabbit Monoclonal Antibody (M00131) Images



Western blot analysis of TLR2 using anti-TLR2 antibody (M00131). Electrophoresis was performed on a 5-20% SDS-PAGE gel at 70V (Stacking gel) / 90V (Resolving gel) for 2-3 hours. The sample well of each lane was loaded with 30 ug of sample under reducing conditions. Lane 1: human CACO-2 whole cell lysates. After electrophoresis, proteins were transferred to a nitrocellulose membrane at 150 mA for 50-90 minutes. Blocked the membrane with 5% non-fat milk/TBS for 1.5 hour at RT. The membrane was incubated with rabbit anti-TLR2 antigen affinity purified monoclonal antibody (Catalog # M00131) at 1:1000 overnight at 4°C, then washed with TBS-0.1%Tween 3 times with 5 minutes each and probed with a goat anti-rabbit IgG-HRP secondary antibody at a dilution of 1:500 for 1.5 hour at RT. The signal is developed using an Enhanced Chemiluminescent detection (ECL) kit (Catalog # EK1002) with Tanon 5200 system. A specific band was detected for TLR2 at approximately 90 kDa. The expected band size for TLR2 is at 90 kDa.



The effect of ischemic postconditioning on TLR2 between 2 hour and 4.5 hour ischemia groups. (A) Representative images of cells with positive immunofluorescence staining to TLR2, scale bar = 50 um. (B) Statistics of the number of cells stained with TLR2. (C) Statistics of the transcriptional levels of TLR2. (D) Representative Western blotting images of TLR2. (E) Statistics of the expressional level of TLR2. (F) Representative images under confocal microscope in the sham group. (G) Representative images under confocal microscope in the ischemia group; (n = 4 in each group). Index in PubMed under a CC BY license. PMID: 24460643

## 5 Publications Citing This Product

1. PubMed ID: 31857223, Shi Y, Vistro WA, Bai X, Wu R, Chen C, Huang Y, Fazlani SA, Tarique I, Yang P, Chen Q. Effect of seasonal variance on intestinal epithelial barriers and the associated innate immune response of the small intestine of the Chinese soft-shelled turtles. *Fish Shellfish*
2. PubMed ID: 32801828, Feng S, Ju L, Shao Z, Grzanna M, Jia L, Liu M. Therapeutic Effect of C-C Chemokine Receptor Type 1 (CCR1) Antagonist BX471 on Allergic Rhinitis. *J Inflamm Res.* 2020 Jul 21;13:343-356. doi:10.2147/JIR.S254717. PMID: 32801828; PMCID: PMC7398876.
3. PubMed ID: 27532861, Expression of TLR2/4 on Epididymal Spermatozoa of the Chinese Soft-shelled Turtle *Pelodiscus sinensis* During the Hibernation Season

Visit [bosterbio.com/anti-tnfr2-rabbit-mono-clonal-antibody-m00131-boster.html](http://bosterbio.com/anti-tnfr2-rabbit-mono-clonal-antibody-m00131-boster.html) to see all 5 publications.

## Submit a product review to Biocompare.com

Submit a review of this product to Biocompare.com to receive a \$20 Amazon.com giftcard! Your reviews help your fellow scientists make the right decisions. Thank you for your contribution.



Anti-TLR2 Rabbit Monoclonal Antibody

For Research Use Only. Not for use in diagnostic procedures.