

Anti-IF4E Antibody

Catalog Number: M00135-2

About EIF4E

Recognizes and binds the 7-methylguanosine-containing mRNA cap during an early step in the initiation of protein synthesis and facilitates ribosome binding by inducing the unwinding of the mRNAs secondary structures. Component of the CYFIP1-EIF4E-FMR1 complex which binds to the mRNA cap and mediates translational repression. In the CYFIP1-EIF4E-FMR1 complex this subunit mediates the binding to the mRNA cap.

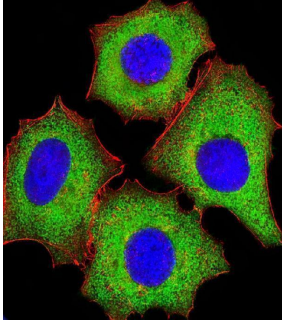
Overview

Product Name	Anti-IF4E Antibody
Reactive Species	Human, Mouse, Rat
Description	Boster Bio Anti-IF4E Antibody (Catalog # M00135-2). Tested in WB, IF application(s). This antibody reacts with Human, Mouse, Rat.
Application	IF, WB
Clonality	Monoclonal 1504CT774.14.55
Formulation	Purified monoclonal antibody supplied in PBS with 0.09% (W/V) sodium azide.
Storage Instructions	Maintain refrigerated at 2-8°C for up to 2 weeks. For long-term storage, store at -20°C in small aliquots to prevent freeze-thaw cycles.
Host	Mouse
Uniprot ID	P06730

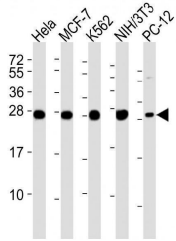
Technical Details

Immunogen	This IF4E antibody is generated from a mouse immunized with a recombinant protein of human IF4E.
Predicted Reactive Species	Bovine, Mouse
Isotype	IgG1, ²
Purification	This antibody is purified through a protein G column, followed by dialysis against PBS.
Suggested Dilutions	IF: 1:25 WB: 1:4000

Anti-IF4E Antibody (M00135-2) Images



Immunofluorescent analysis of 4% paraformaldehyde-fixed, 0.1% Triton X-100 permeabilized MCF-7 (human breast cancer cell line) cells labeling IF4E with M00135-2 at 1/25 dilution, followed by Dylight® 488-conjugated goat anti-mouse IgG secondary antibody at 1/200 dilution (green). Immunofluorescence image showing cytoplasm staining on MCF-7 cell line. Cytoplasmic actin is detected with Dylight® 554 Phalloidin at 1/100 dilution (red). The nuclear counter stain is DAPI (blue).



All lanes : Anti-IF4E Antibody at 1:4000 dilution
Lane 1: HeLa whole cell lysates
Lane 2: MCF-7 whole cell lysates
Lane 3: K562 whole cell lysates
Lane 4: NIH/3T3 whole cell lysates
Lane 5: PC-12 whole cell lysates
Lysates/proteins at 20 ug per lane. Secondary Goat Anti-mouse IgG, (H+L), Peroxidase conjugated at 1/10000 dilution
Predicted band size : 25 kDa
Blocking/Dilution buffer: 5% NFDN/TBST.

Submit a product review to Biocompare.com

Submit a review of this product to Biocompare.com to receive a \$20 Amazon.com giftcard! Your reviews help your fellow scientists make the right decisions. Thank you for your contribution.



Anti-IF4E Antibody

For Research Use Only. Not for use in diagnostic procedures.