

Anti-MSH2 Monoclonal Antibody

Catalog Number: M00140

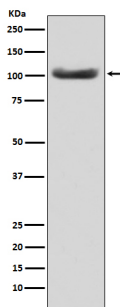
Overview

Product Name	Anti-MSH2 Monoclonal Antibody
Reactive Species	Human
Description	Boster Bio Anti-MSH2 Monoclonal Antibody catalog # M00140. Tested in WB, Flow Cytometry applications. This antibody reacts with Human.
Application	Flow Cytometry, WB
Clonality	Monoclonal ACIH-13
Formulation	Rabbit IgG in stabilizing components, phosphate buffered saline, pH 7.4, 150mM NaCl, 0.02% sodium azide and 50% glycerol. *This antibody is supplied in a stabilized formulation. Compatibility with conjugation reactions depends on the chemistry of the conjugation method used. For conjugation methods that are not compatible with the stabilizing components present in this formulation, a carrier-free antibody format is required.
Storage Instructions	Store at -20°C for one year. For short term storage and frequent use, store at 4°C for up to one month. Avoid repeated freeze-thaw cycles.
Host	Rabbit
Uniprot ID	P43246

Technical Details

Immunogen	A synthesized peptide derived from human MSH2 MSH2 (MutS homologue 2) forms the hMutS-Alpha dimer with MSH6 and is an essential component of the mismatch repair process. hMutS-Alpha is part of the BRCA1-associated surveillance complex (BASC), a complex that also contains BRCA1, MLH1, ATM, BLM, PMS2 proteins and the Rad50-Mre11-NBS1 complex.
Isotype	Rabbit IgG
Form	Liquid
Concentration	0.5mg/ml
Purification	Affinity-chromatography
Suggested Dilutions	WB 1:500-2000 FC 1:20

Anti-MSH2 Monoclonal Antibody (M00140) Images



Western blot analysis of MSH2 expression in HeLa cell lysate.

Submit a product review to Biocompare.com

Submit a review of this product to Biocompare.com to receive a \$20 Amazon.com giftcard! Your reviews help your fellow scientists make the right decisions. Thank you for your contribution.



Anti-MSH2 Monoclonal Antibody

For Research Use Only. Not for use in diagnostic procedures.