

Anti-MSH2 Rabbit Monoclonal Antibody, Clone#RM375

Catalog Number: M00140-1

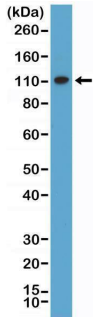
Overview

Product Name	Anti-MSH2 Rabbit Monoclonal Antibody, Clone#RM375
Reactive Species	Human
Description	Boster Bio Anti-MSH2 Rabbit Monoclonal Antibody, Clone#RM375 (Catalog # M00140-1). Tested in IHC, WB applications. This antibody reacts with Human.
Application	IHC, WB
Clonality	Monoclonal RM375
Formulation	50% Glycerol/PBS with 1% stabilizing protein and 0.09% sodium azide This antibody is supplied in a stabilized formulation. Compatibility with conjugation reactions depends on the chemistry of the conjugation method used. For conjugation methods that are not compatible with the stabilizing components present in this formulation, a carrier-free antibody format is required.
Storage Instructions	Store at -20°C for one year. Avoid repeated freeze-thaw cycles.
Host	Rabbit
Uniprot ID	P43246

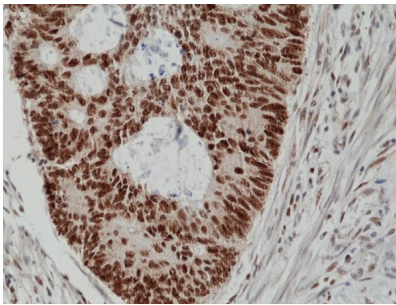
Technical Details

Immunogen	A mammalian cells expressed recombinant protein fragment within 500 amino acids of the N-terminus of human Msh2
Cross Reactivity	This antibody reacts to human DNA mismatch repair protein Msh2
Isotype	Rabbit IgG
Form	Liquid
Concentration	0.5-1mg/ml, actual concentration vary by lot. Use suggested dilution ratio to decide dilution procedure.
Purification	Protein A affinity purified from an animal origin-free culture supernatant
Suggested Dilutions	Immunohistochemistry (IHC): 1:200-1:1000 dilution WB: 1:400-1:2000 dilution.

Anti-MSH2 Rabbit Monoclonal Antibody, Clone#RM375 (M00140-1) Images



Western Blotting resultWestern Blot of HeLa lysate using anti-MSH2 rabbit monoclonal antibody (Clone RM375) at a 1:500 dilution.



IHC resultImmunohistochemical staining of formalin fixed and paraffin embedded human colon cancer tissue section using anti-MSH2 rabbit monoclonal antibody (Clone RM375) at a 1:100 dilution.

Submit a product review to Biocompare.com

Submit a review of this product to Biocompare.com to receive a \$20 Amazon.com giftcard! Your reviews help your fellow scientists make the right decisions. Thank you for your contribution.



Anti-MSH2 Rabbit Monoclonal Antibody, Clone#RM375

For Research Use Only. Not for use in diagnostic procedures.