

Anti-Cbl Monoclonal Antibody

Catalog Number: M00152

Overview

Product Name	Anti-Cbl Monoclonal Antibody
Reactive Species	Human, Mouse, Rat
Description	Boster Bio Anti-Cbl Monoclonal Antibody catalog # M00152. Tested in ELISA, Flow Cytometry, IF, IHC, WB applications. This antibody reacts with Human, Mouse, Rat.
Application	ELISA, Flow Cytometry, IF, IHC, WB
Clonality	Monoclonal 3B12
Formulation	Ascitic fluid containing 0.03% sodium azide.
Storage Instructions	Store at -20°C for one year. For short term storage and frequent use, store at 4°C for up to one month. Avoid repeated freeze-thaw cycles.
Host	Mouse
Uniprot ID	P22681

Technical Details

Immunogen	Purified recombinant fragment of human Cbl expressed in E. Coli.
Isotype	IgG
Form	Liquid
Concentration	1 mg/ml
Purification	Affinity purification
Suggested Dilutions	<p>Dilute the sample so that the expected range of concentrations fall within the detection range of this kit.</p> <p>If the expected range of concentration is unknown, a pilot test should be conducted to decide the optimal dilution ratio for your samples.</p> <p>Some PubMed article(s) citing the expression level of this target are as follows:</p> <p>Boster Bio's internal QC testing used:</p> <p>WB 1:500-1:2000 IHC 1:200-1:1000 IF 1:200-1:1000 FC 1:200-1:400 ELISA 1:10000</p>

Anti-Cbl Monoclonal Antibody (M00152) Images

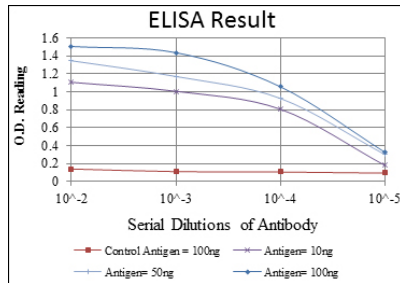


Figure 5. ELISA validation of CBL using Anti-Cbl Monoclonal Antibody (M00152).

ELISA analysis of Cbl antibody.

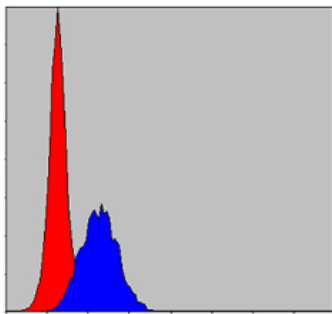


Figure 4. Flow Cytometry validation of CBL using Anti-Cbl Monoclonal Antibody (M00152).

Flow cytometric (FCM) analysis of MCF-7 cells using Cbl Monoclonal Antibody (blue) and negative control (red).

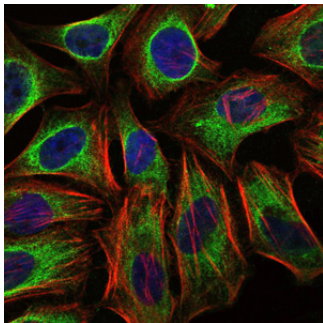


Figure 3. Immunofluorescent staining data of CBL using Anti-Cbl Monoclonal Antibody (M00152).

Immunofluorescence (IF) analysis of HeLa cells using Cbl Monoclonal Antibody (green). Blue: DRAQ5 fluorescent DNA dye. Red: Actin filaments have been labeled with Alexa Fluor-555 phalloidin.

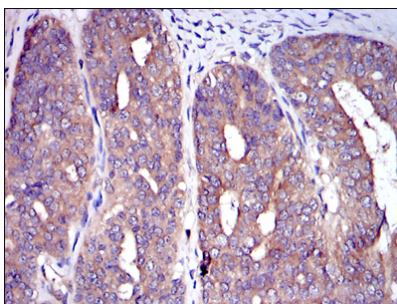


Figure 2. Immunohistochemistry validation of CBL using Anti-Cbl Monoclonal Antibody (M00152).

Immunohistochemistry (IHC) analysis of paraffin-embedded ovarian cancer tissues with DAB staining using Cbl Monoclonal Antibody.
For more protocol information of IHC

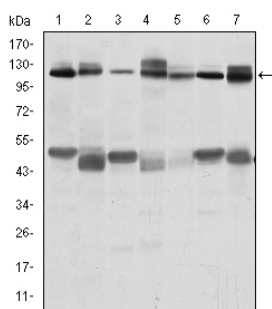


Figure 1. Western blotting validation for Anti-Cbl Monoclonal Antibody M00152

Western Blot (WB) analysis using Cbl Monoclonal Antibody against RAJI (1)

Submit a product review to Biocompare.com

Submit a review of this product to Biocompare.com to receive a \$20 Amazon.com giftcard! Your reviews help your fellow scientists make the right decisions. Thank you for your contribution.



Anti-Cbl Monoclonal Antibody