

Anti-RYR2 Antibody (Monoclonal, 34R95)

Catalog Number: M00155

About Ryr2

Ryanodine receptor 2 (RYR2) is a protein found primarily in cardiac muscle. In humans, it is encoded by the RYR2 gene. This gene encodes a ryanodine receptor found in cardiac muscle sarcoplasmic reticulum. The encoded protein is one of the components of a calcium channel, composed of a tetramer of the ryanodine receptor proteins and a tetramer of FK506 binding protein 1B proteins, that supplies calcium to cardiac muscle. Mutations in this gene are associated with stress-induced polymorphic ventricular tachycardia and arrhythmogenic right ventricular dysplasia.

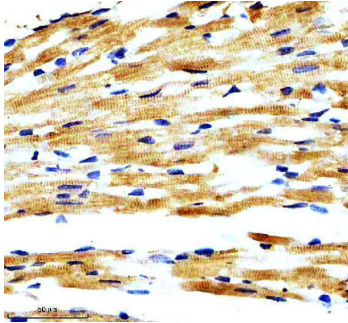
Overview

Product Name	Anti-RYR2 Antibody (Monoclonal, 34R95)
Reactive Species	Mouse, Rat
Description	Boster Bio Anti-RYR2 Antibody (Monoclonal, 34R95) catalog # M00155. Tested in WB, IHC applications. This antibody reacts with Mouse, Rat.
Application	IHC, WB
Clonality	Monoclonal 34R95
Formulation	Rabbit IgG in stabilizing components, phosphate buffered saline, pH 7.4, 150mM NaCl, 0.02% sodium azide and 50% glycerol. This antibody is supplied in a stabilized formulation. Compatibility with conjugation reactions depends on the chemistry of the conjugation method used. For conjugation methods that are not compatible with the stabilizing components present in this formulation, a carrier-free antibody format is required.
Storage Instructions	Store at -20°C for one year. For short term storage and frequent use, store at 4°C for up to one month. Avoid repeated freeze-thaw cycles.
Host	Rabbit
Uniprot ID	E9Q401

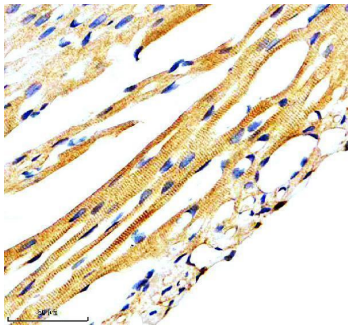
Technical Details

Immunogen	Recombinant protein within human RYR-2 aa 1303-1598.
Form	Liquid
Concentration	500 ug/ml
Purification	Protein A affinity purified.
Suggested Dilutions	Western blot, 1:500-2000 Immunohistochemistry, 1:50-200

Anti-RYR2 Antibody (Monoclonal, 34R95) (M00155) Images



IHC analysis of RYR2 using anti-RYR2 antibody (M00155). RYR2 was detected in a paraffin-embedded section of mouse heart tissue. Heat mediated antigen retrieval was performed in EDTA buffer (pH 8.0, epitope retrieval solution). The tissue section was blocked with 10% goat serum. The tissue section was then incubated with 1:50 rabbit anti-RYR2 Antibody (M00155) overnight at 4°C. Peroxidase Conjugated Goat Anti-rabbit IgG was used as secondary antibody and incubated for 30 minutes at 37°C. The tissue section was developed using HRP Conjugated Rabbit IgG Super Vision Assay Kit (Catalog # SV0002) with DAB as the chromogen.



IHC analysis of RYR2 using anti-RYR2 antibody (M00155). RYR2 was detected in a paraffin-embedded section of rat heart tissue. Heat mediated antigen retrieval was performed in EDTA buffer (pH 8.0, epitope retrieval solution). The tissue section was blocked with 10% goat serum. The tissue section was then incubated with 1:50 rabbit anti-RYR2 Antibody (M00155) overnight at 4°C. Peroxidase Conjugated Goat Anti-rabbit IgG was used as secondary antibody and incubated for 30 minutes at 37°C. The tissue section was developed using HRP Conjugated Rabbit IgG Super Vision Assay Kit (Catalog # SV0002) with DAB as the chromogen.

Submit a product review to Biocompare.com

Submit a review of this product to Biocompare.com to receive a \$20 Amazon.com giftcard! Your reviews help your fellow scientists make the right decisions. Thank you for your contribution.



Anti-RYR2 Antibody (Monoclonal, 34R95)

For Research Use Only. Not for use in diagnostic procedures.