

Anti-CCR2/CKR2 Rabbit Monoclonal Antibody

Catalog Number: M00158

About CCR2

Phosphoinositide-3-kinase (PI3K) that phosphorylates PtdIns (Phosphatidylinositol), PtdIns4P (Phosphatidylinositol 4-phosphate) and PtdIns (4,5) P2 (Phosphatidylinositol 4,5-bisphosphate) to generate phosphatidylinositol 3,4,5-trisphosphate (PIP3) . PIP3 plays a key role by recruiting PH domain-containing proteins to the membrane, including AKT1 and PDK1, activating signaling cascades involved in cell growth, survival, proliferation, motility and morphology. Participates in cellular signaling in response to various growth factors.

Overview

Product Name	Anti-CCR2/CKR2 Rabbit Monoclonal Antibody
Reactive Species	Human, Mouse
Description	Boster Bio Anti-CCR2/CKR2 Rabbit Monoclonal Antibody catalog # M00158. Tested in WB, IHC, Flow Cytometry, IP applications. This antibody reacts with Human, Mouse.
Application	Flow Cytometry, IP, IHC, WB
Clonality	Monoclonal AOF-3
Formulation	Rabbit IgG in phosphate buffered saline, pH 7.4, 150mM NaCl, 0.02% sodium azide and 50% glycerol, 0.4-0.5mg/ml BSA.
Storage Instructions	Store at -20°C for one year. For short term storage and frequent use, store at 4°C for up to one month. Avoid repeated freeze-thaw cycles.
Host	Rabbit
Uniprot ID	P41597

Technical Details

Immunogen	A synthesized peptide derived from human CCR2/CKR2 Receptor.
Isotype	Rabbit IgG
Form	Liquid
Concentration	Actual concentration vary by lot. Use suggested dilution ratio to decide dilution procedure.
Purification	Affinity-chromatography
Suggested Dilutions	Dilute the sample so that the expected range of concentrations fall within the detection range of this kit. If the expected range of concentration is unknown, a pilot test should be conducted to decide the optimal dilution ratio for your samples. Some PubMed article(s) citing the expression level of this target are as follows:

Boster Bio's internal QC testing used:

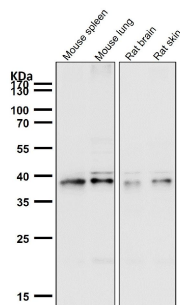
WB 1:500-1:1000

IHC 1:50-1:200

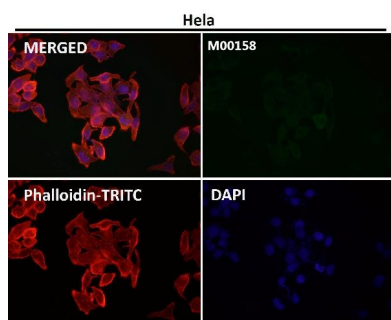
IP 1:50

FC 1:100

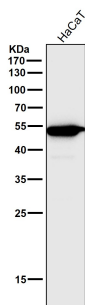
Anti-CCR2/CKR2 Rabbit Monoclonal Antibody (M00158) Images



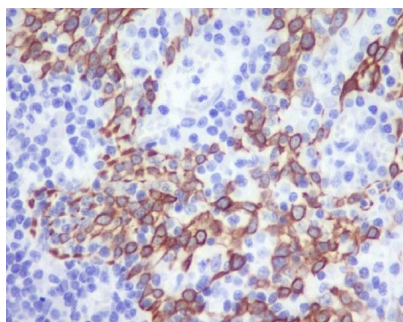
All lanes use the Antibody at 1:500 dilution for 1 hour at room temperature.



Immunofluorescent analysis using the Antibody at 1:50 dilution.

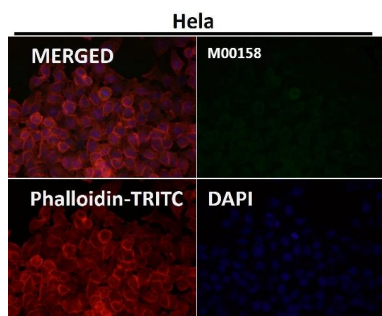


All lanes use the Antibody at 1:1K dilution for 1 hour at room temperature.



Immunohistochemical analysis of paraffin-embedded human tonsil, using CCR2/CKR2 Antibody.

Immunofluorescent analysis using the Antibody at 1:50 dilution.



2 Publications Citing This Product

1. PubMed ID: 26648448, N-methyl-N-nitrosoguanidine induces the expression of CCR2 in human gastric epithelial cells promoting CCL2-mediated migration
2. PubMed ID: 24416340, Zhao C, Bu X, Wang W, Ma T, Ma H. Plos One. 2014 Jan 8;9(1):E85058. Doi: 10.1371/Journal.Pone.0085058. Ecollection 2014. Gec-Derived Sfrp5 Inhibits Wnt5A-Induced Macrophage Chemotaxis And Activation.

Visit bosterbio.com/anti-ccr2-ckr2-m00158-boster.html to see all 2 publications.

Submit a product review to Biocompare.com

Submit a review of this product to Biocompare.com to receive a \$20 Amazon.com giftcard! Your reviews help your fellow scientists make the right decisions. Thank you for your contribution.



Anti-CCR2/CKR2 Rabbit Monoclonal Antibody