

## Anti-GLUT1 SLC2A1 Rabbit Monoclonal Antibody

Catalog Number: M00163

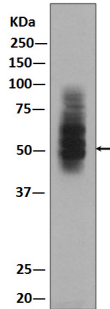
### Overview

Product Name	Anti-GLUT1 SLC2A1 Rabbit Monoclonal Antibody
Reactive Species	Human, Mouse, Rat
Description	Boster Bio Anti-GLUT1 SLC2A1 Rabbit Monoclonal Antibody catalog # M00163. Tested in WB, IHC, ICC/IF, Flow Cytometry applications. This antibody reacts with Human, Mouse, Rat.
Application	Flow Cytometry, IF, IHC, ICC, WB
Clonality	Monoclonal CGG-19
Formulation	Rabbit IgG in stabilizing components, phosphate buffered saline, pH 7.4, 150mM NaCl, 0.02% sodium azide and 50% glycerol. *This antibody is supplied in a stabilized formulation. Compatibility with conjugation reactions depends on the chemistry of the conjugation method used. For conjugation methods that are not compatible with the stabilizing components present in this formulation, a carrier-free antibody format is required.
Storage Instructions	Store at -20°C for one year. For short term storage and frequent use, store at 4°C for up to one month. Avoid repeated freeze-thaw cycles.
Host	Rabbit
Uniprot ID	P11166

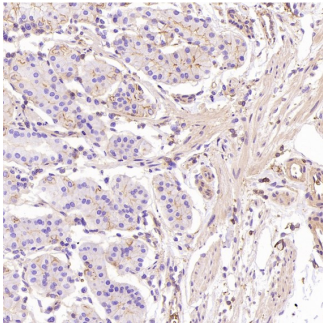
### Technical Details

Immunogen	A synthesized peptide derived from human Glucose Transporter GLUT1
Isotype	Rabbit IgG
Form	Liquid
Concentration	0.5mg/ml
Purification	Affinity-chromatography
Suggested Dilutions	WB 1:500-2000 IHC 1:50-200 ICC/IF 1:50-200 FC 1:50

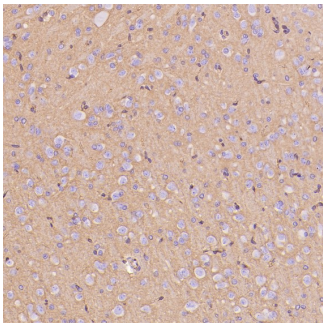
## Anti-GLUT1 SLC2A1 Rabbit Monoclonal Antibody (M00163) Images



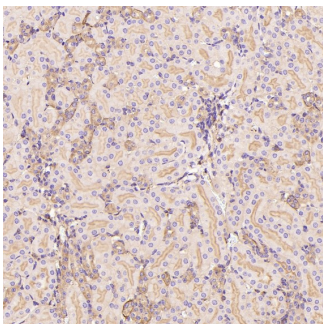
Western blot analysis of GLUT1 expression in HepG2 lysate.



Immunohistochemical analysis of paraffin-embedded Human stomach, using the Antibody at 1:800 dilution.

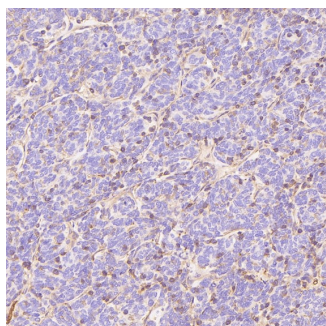


Immunohistochemical analysis of paraffin-embedded Rat hippocampus, using the Antibody at 1:300 dilution.

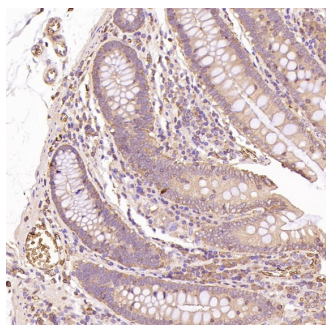


Immunohistochemical analysis of paraffin-embedded Mouse kidney, using the Antibody at 1:300 dilution.

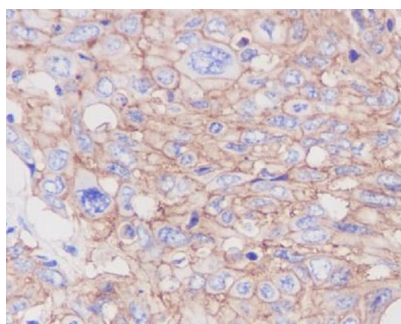
Immunohistochemical analysis of paraffin-embedded Human thymoma, using the Antibody at 1:200 dilution.



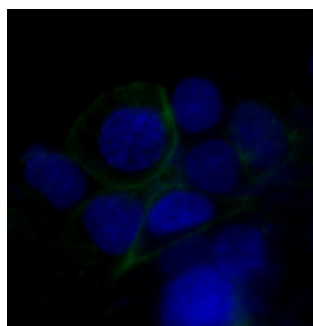
Immunohistochemical analysis of paraffin-embedded Human colon, using the Antibody at 1:200 dilution.



Immunohistochemical analysis of paraffin-embedded human cervix cancer, using GLUT1 Antibody.



Immunofluorescent analysis using the Antibody at 1:50 dilution.



Immunofluorescent analysis of HepG2 cells, using GLUT1 Antibody .

## 4 Publications Citing This Product

---

1. PubMed ID: 32768579, Chen J,Wu D,Dong Z,Chen A,Liu S.The expression and role of glycolysis-associated molecules in infantile hemangioma.Life Sci.2020 Oct 15;259:118215.doi:10.1016/j.lfs.2020.118215.Epub 2020 Aug 5.PMID:32768579.

2. PubMed ID: 26600164, Co-Inhibition of GLUT-1 Expression and the PI3K/Akt Signaling Pathway to Enhance the Radiosensitivity of Laryngeal Carcinoma Xenografts?In Vivo

3. PubMed ID: 25120770, Xu Yy, Wu Tt, Zhou Sh, Bao Yy, Wang Qy, Fan J, Huang Yp. Int J Clin Exp Pathol. 2014 Jun 15;7(7):3938-47. Ecollection 2014. Apigenin Suppresses Glut-1 And P-Akt Expression To Enhance The Chemosensitivity To Cisplatin Of Laryngeal Carcinoma Hep-2 C...

Visit [bosterbio.com/anti-glut1-rabbit-monoclonal-antibody-m00163-boster.html](http://bosterbio.com/anti-glut1-rabbit-monoclonal-antibody-m00163-boster.html) to see all 4 publications.

## Submit a product review to Biocompare.com

---

Submit a review of this product to Biocompare.com to receive a \$20 Amazon.com giftcard! Your reviews help your fellow scientists make the right decisions. Thank you for your contribution.



Anti-GLUT1 SLC2A1 Rabbit Monoclonal Antibody

For Research Use Only. Not for use in diagnostic procedures.