

Anti-IRF3 Rabbit Monoclonal Antibody

Catalog Number: M00165

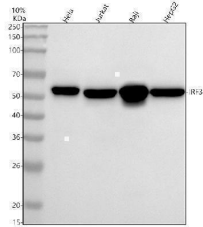
Overview

Product Name	Anti-IRF3 Rabbit Monoclonal Antibody
Reactive Species	Human, Mouse, Rat
Description	Boster Bio Anti-IRF3 Rabbit Monoclonal Antibody catalog # M00165. Tested in WB, IHC, ICC/IF, Flow Cytometry applications. This antibody reacts with Human, Mouse, Rat.
Application	Flow Cytometry, IF, IHC, ICC, WB
Clonality	Monoclonal GDG-9
Formulation	Rabbit IgG in stabilizing components, phosphate buffered saline, pH 7.4, 150mM NaCl, 0.02% sodium azide and 50% glycerol. *This antibody is supplied in a stabilized formulation. Compatibility with conjugation reactions depends on the chemistry of the conjugation method used. For conjugation methods that are not compatible with the stabilizing components present in this formulation, a carrier-free antibody format is required.
Storage Instructions	Store at -20°C for one year. For short term storage and frequent use, store at 4°C for up to one month. Avoid repeated freeze-thaw cycles.
Host	Rabbit
Uniprot ID	Q14653

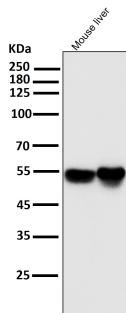
Technical Details

Immunogen	A synthesized peptide derived from human IRF3
Isotype	Rabbit IgG
Form	Liquid
Concentration	0.5mg/ml
Purification	Affinity-chromatography
Suggested Dilutions	WB 1:500-1000 IHC 1:50-200 ICC/IF 1:50-200 <tFC 1:100

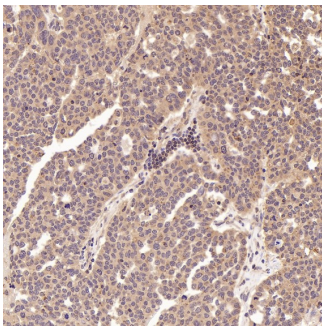
Anti-IRF3 Rabbit Monoclonal Antibody (M00165) Images



Western blot analysis of IRF3 using anti-IRF3 antibody (M00165). Electrophoresis was performed on a 10% SDS-PAGE gel at 80V (Stacking gel) / 120V (Resolving gel) for 2 hours. The sample well of each lane was loaded with 30 ug of sample under reducing conditions. Lane 1: human HeLa whole cell lysates, Lane 2: human Jurkat whole cell lysates, Lane 3: human Raji whole cell lysates, Lane 4: human HepG2 whole cell lysates. After electrophoresis, proteins were transferred to a nitrocellulose membrane at 150 mA for 50-90 minutes. Blocked the membrane with 5% non-fat milk/TBS for 1.5 hour at RT. The membrane was incubated with rabbit anti-IRF3 antigen affinity purified monoclonal antibody (M00165) at 1:500 overnight at 4°C, then washed with TBS-0.1%Tween 3 times with 5 minutes each and probed with a goat anti-rabbit IgG-HRP secondary antibody at a dilution of 1:5000 for 1.5 hour at RT. The signal is developed using an ECL Plus Western Blotting Substrate (Catalog # AR1196-200) with Tanon 5200 system. A specific band was detected for IRF3 at approximately 60 kDa. The expected band size for IRF3 is at 47 kDa.

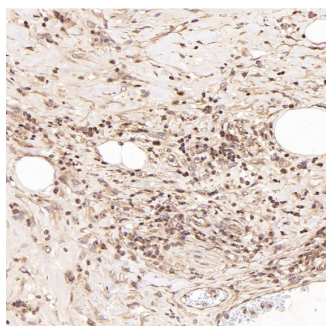


All lanes use the Antibody at 1:2W dilution for 1 hour at room temperature.

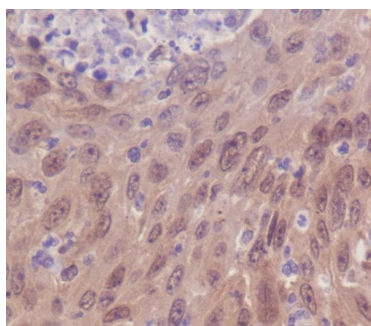
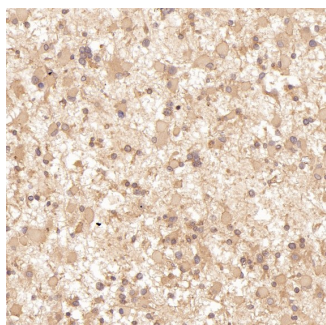


Immunohistochemical analysis of paraffin-embedded Human ovarian cancer, using the Antibody at 1:50 dilution.

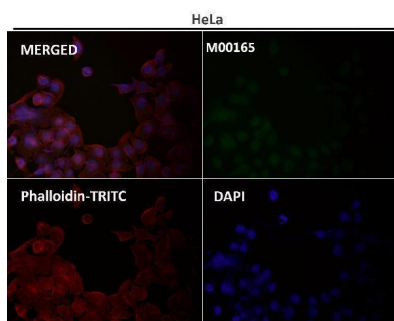
Immunohistochemical analysis of paraffin-embedded Human Hodgkin's Lymphoma, using the Antibody at 1:50 dilution.



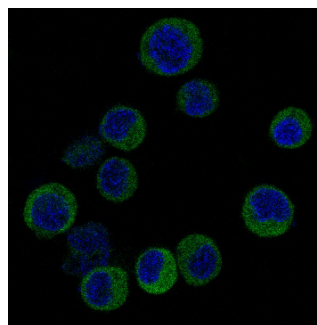
Immunohistochemical analysis of paraffin-embedded Human astrocytoma, using the Antibody at 1:50 dilution.



Immunohistochemical analysis of paraffin-embedded human cervix carcinoma, using IRF3 Antibody.



Immunofluorescent analysis using the Antibody at 1:50 dilution.



Immunofluorescent analysis of Jurkat cells, using IRF3 Antibody.

1 Publications Citing This Product

1. PubMed ID: 27164829, Curcumin exerts anti-inflammatory and antioxidative properties in 1-methyl-4-phenylpyridinium ion (MPP(+))-stimulated mesencephalic astrocytes by interference with TLR4 and downstream signaling pathway

Visit bosterbio.com/anti-irf3-rabbit-monoclonal-antibody-m00165-boster.html to see all 1 publications.

Submit a product review to Biocompare.com

Submit a review of this product to Biocompare.com to receive a \$20 Amazon.com giftcard! Your reviews help your fellow scientists make the right decisions. Thank you for your contribution.



Anti-IRF3 Rabbit Monoclonal Antibody

For Research Use Only. Not for use in diagnostic procedures.