

## Anti-IRF3 Mouse Monoclonal Antibody [Clone ID: OTI4D4]

Catalog Number: M00165-6

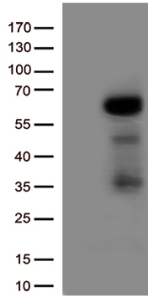
### Overview

|                      |  |
|----------------------|--|
| Product Name         | Anti-IRF3 Mouse Monoclonal Antibody [Clone ID: OTI4D4]   |
| Reactive Species     | Human  |
| Description          | Boster Bio IRF3 mouse monoclonal antibody, clone OTI4D4 (formerly 4D4). Catalog# M00165-6. Tested in FC, IF, IHC, WB. This antibody reacts with Human.   |
| Application          | Flow Cytometry, IF, IHC, WB  |
| Clonality            | Monoclonal OTI4D4  |
| Formulation          | PBS (pH 7.3) containing 1% stabilizing protein, 50% glycerol and 0.02% sodium azide. This antibody is supplied in a stabilized formulation. Compatibility with conjugation reactions depends on the chemistry of the conjugation method used. For conjugation methods that are not compatible with the stabilizing components present in this formulation, a carrier-free antibody format is required. |
| Storage Instructions | Store at -20°C as received.  |
| Host                 | Mouse  |
| Uniprot ID           | Q14653   |

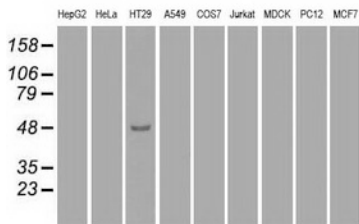
### Technical Details

|                     |   |
|---------------------|---|
| Immunogen           | Full length human recombinant protein of human IRF3 (NP_001562) produced in HEK293T cell.                 |
| Isotype             | IgG2a   |
| Concentration       | 1 mg/ml   |
| Purification        | Purified from mouse ascites fluids or tissue culture supernatant by affinity chromatography (protein A/G) |
| Suggested Dilutions | WB: 1:1000~2000<br>IHC: 1:50<br>IF: 1:100<br>Flow cytometry: 1:100  |

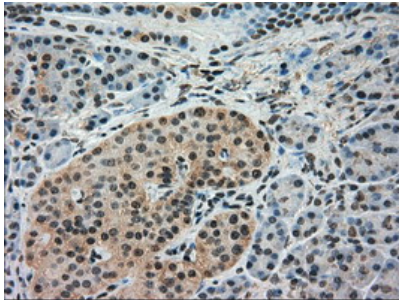
## Anti-IRF3 Mouse Monoclonal Antibody [Clone ID: OTI4D4] (M00165-6) Images



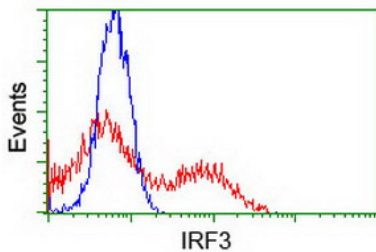
HEK293T cells were transfected with the pCMV6-ENTRY control (Left lane) or pCMV6-ENTRY IRF3 (Right lane) cDNA for 48 hrs and lysed. Equivalent amounts of cell lysates (5 ug per lane) were separated by SDS-PAGE and immunoblotted with anti-IRF3 (1:500).



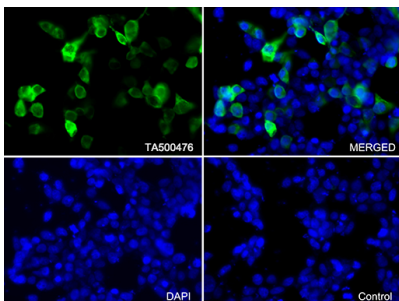
Western blot analysis of extracts (35ug) from 9 different cell lines by using anti-IRF3 monoclonal antibody (HepG2: human; HeLa: human; SVT2: mouse; A549: human; COS7: monkey; Jurkat: human; MDCK: canine; PC12: rat; MCF7: human).



Immunohistochemical staining of paraffin-embedded Human pancreas tissue within the normal limits using anti-IRF3 mouse monoclonal antibody. (Heat-induced epitope retrieval by 10mM citric buffer)



HEK293T cells transfected with either IRF3 (Myc-DDK-tagged) overexpress plasmid (Red) or empty vector control plasmid (Blue) were immunostained by anti-IRF3 antibody (M00165-6)



Immunofluorescent staining of HEK293T cells transfected by pCMV6-ENTRY IRF3 using anti-IRF3 antibody (M00165-6/green)

Submit a review of this product to Biocompare.com to receive a \$20 Amazon.com giftcard! Your reviews help your fellow scientists make the right decisions. Thank you for your contribution.



Anti-IRF3 Mouse Monoclonal Antibody [Clone ID: OTI4D4]

For Research Use Only. Not for use in diagnostic procedures.