

Anti-p27Kip1 (Cyclin-dependent kinase inhibitor 1B) CDKN1B Rabbit Monoclonal Antibody, Clone#RM302

Catalog Number: M00173-2

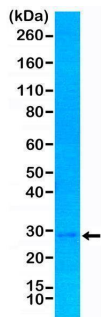
Overview

Product Name	Anti-p27Kip1 (Cyclin-dependent kinase inhibitor 1B) CDKN1B Rabbit Monoclonal Antibody, Clone#RM302
Reactive Species	Human
Description	Boster Bio Anti-p27Kip1 (Cyclin-dependent kinase inhibitor 1B) CDKN1B Rabbit Monoclonal Antibody, Clone#RM302 (Catalog # M00173-2). Tested in IHC, WB applications. This antibody reacts with Human.
Application	IHC, WB
Clonality	Monoclonal RM302
Formulation	50% Glycerol/PBS with 1% stabilizing protein and 0.09% sodium azide This antibody is supplied in a stabilized formulation. Compatibility with conjugation reactions depends on the chemistry of the conjugation method used. For conjugation methods that are not compatible with the stabilizing components present in this formulation, a carrier-free antibody format is required.
Storage Instructions	Store at -20°C for one year. Avoid repeated freeze-thaw cycles.
Host	Rabbit
Uniprot ID	P46527

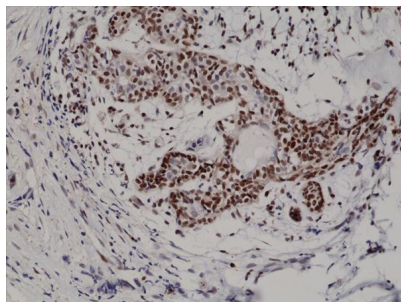
Technical Details

Immunogen	A peptide corresponding to the C-terminus of human p27Kip1.
Predicted Reactive Species	Mouse
Cross Reactivity	This antibody reacts to human p27Kip1 (Cyclin-dependent kinase inhibitor 1B). It may also react to mouse p27Kip1, as predicted by immunogen homology.
Isotype	Rabbit IgG
Form	Liquid
Concentration	0.5-1mg/ml, actual concentration vary by lot. Use suggested dilution ratio to decide dilution procedure.
Purification	Protein A affinity purified from an animal origin-free culture supernatant
Suggested Dilutions	Immunohistochemistry (IHC): 1:100-1:200 dilution WB: 1:500-1:1000 dilution.

Anti-p27Kip1 (Cyclin-dependent kinase inhibitor 1B) CDKN1B Rabbit Monoclonal Antibody, Clone#RM302 (M00173-2) Images



Western Blotting result Western Blot of MCF-7 cells lysate using anti-p27Kip1 rabbit monoclonal antibody (clone RM3.2) at a 1:1000 dilution.



IHC result Immunohistochemical staining of formalin fixed and paraffin embedded human breast cancer tissue section using anti-p27Kip1 rabbit monoclonal antibody (clone RM302) at a 1:200 dilution.

Submit a product review to Biocompare.com

Submit a review of this product to Biocompare.com to receive a \$20 Amazon.com giftcard! Your reviews help your fellow scientists make the right decisions. Thank you for your contribution.



Anti-p27Kip1 (Cyclin-dependent kinase inhibitor 1B) CDKN1B Rabbit Monoclonal Antibody, Clone#RM302

For Research Use Only. Not for use in diagnostic procedures.