

## Anti-p38 MAPK MAPK14 Rabbit Monoclonal Antibody, Clone#RM245

Catalog Number: M00176-3

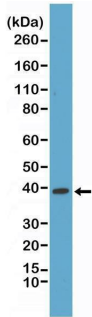
### Overview

Product Name	Anti-p38 MAPK MAPK14 Rabbit Monoclonal Antibody, Clone#RM245
Reactive Species	Human
Description	Boster Bio Anti-p38 MAPK MAPK14 Rabbit Monoclonal Antibody, Clone#RM245 (Catalog # M00176-3). Tested in IHC, WB applications. This antibody reacts with Human.
Application	IHC, WB
Clonality	Monoclonal RM245
Formulation	50% Glycerol/PBS with 1% stabilizing protein and 0.09% sodium azide This antibody is supplied in a stabilized formulation. Compatibility with conjugation reactions depends on the chemistry of the conjugation method used. For conjugation methods that are not compatible with the stabilizing components present in this formulation, a carrier-free antibody format is required.
Storage Instructions	Store at -20°C for one year. Avoid repeated freeze-thaw cycles.
Host	Rabbit
Uniprot ID	Q16539

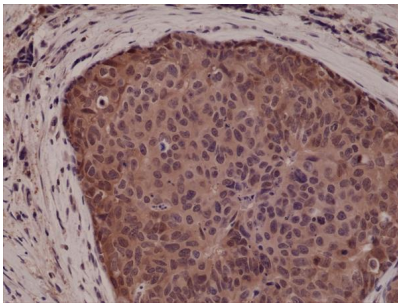
### Technical Details

Immunogen	A peptide corresponding to human p38 MAPK.
Predicted Reactive Species	Mouse, Rat
Cross Reactivity	This antibody reacts to human p38 MAPK. This antibody may also react to rat and mouse p38 MAPK, as predicted by immunogen homology.
Isotype	Rabbit IgG
Form	Liquid
Concentration	0.5-1mg/ml, actual concentration vary by lot. Use suggested dilution ratio to decide dilution procedure.
Purification	Protein A affinity purified from an animal origin-free culture supernatant
Suggested Dilutions	Immunohistochemistry (IHC): 1:1000-1:5000 dilution WB: 1:1000-1:2000 dilution.

## Anti-p38 MAPK MAPK14 Rabbit Monoclonal Antibody, Clone#RM245 (M00176-3) Images



Western Blotting result Western Blot of HeLa cells lysates using Anti-p38 MAPK RM245 at a 1:1000 dilution, showed a band of p38 MAPK (~38 kDa) expressed in HeLa cells.



IHC result Immunohistochemical staining of formalin fixed and paraffin embedded human breast cancer tissue sections using Anti-p38 MAPK RM245 at a 1:5000 dilution.

### 1 Publications Citing This Product

1. PubMed ID: 29048616, Liao S, Xiao S, Chen H, Zhang M, Chen Z, Long Y, Gao L, He J, Ge Y, Yi W, Wu M, Li G, Zhou Y. Int J Oncol. 2017 Nov;51(5):1497-1507. doi: 10.3892/ijo.2017.4137. Epub 2017 Sep 27. The receptor for activated protein kinase C promotes cell growth, in...

Visit [bosterbio.com/anti-p38-mapk-rabbit-monoclonal-antibody-clone-rm245-m00176-3-boster.html](http://bosterbio.com/anti-p38-mapk-rabbit-monoclonal-antibody-clone-rm245-m00176-3-boster.html) to see all 1 publications.

### Submit a product review to Biocompare.com

Submit a review of this product to Biocompare.com to receive a \$20 Amazon.com giftcard! Your reviews help your fellow scientists make the right decisions. Thank you for your contribution.



Anti-p38 MAPK MAPK14 Rabbit Monoclonal Antibody, Clone#RM245

For Research Use Only. Not for use in diagnostic procedures.