

Anti-PD1 PDCD1 Rabbit Monoclonal Antibody

Catalog Number: M00178-1

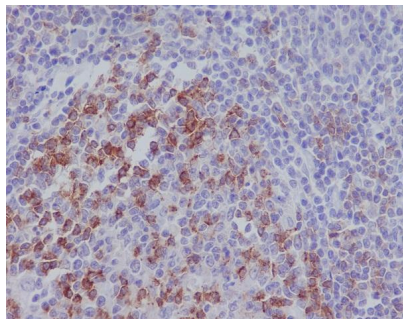
Overview

Product Name	Anti-PD1 PDCD1 Rabbit Monoclonal Antibody
Reactive Species	Human
Description	Boster Bio Anti-PD1 PDCD1 Rabbit Monoclonal Antibody catalog # M00178-1. Tested in IHC application. This antibody reacts with Human.
Application	IHC
Clonality	Monoclonal BEG-16
Formulation	Rabbit IgG in stabilizing components, phosphate buffered saline, pH 7.4, 150mM NaCl, 0.02% sodium azide and 50% glycerol. *This antibody is supplied in a stabilized formulation. Compatibility with conjugation reactions depends on the chemistry of the conjugation method used. For conjugation methods that are not compatible with the stabilizing components present in this formulation, a carrier-free antibody format is required.
Storage Instructions	Store at -20°C for one year. For short term storage and frequent use, store at 4°C for up to one month. Avoid repeated freeze-thaw cycles.
Host	Rabbit
Uniprot ID	Q15116

Technical Details

Immunogen	A synthesized peptide derived from human PD1
Isotype	Rabbit IgG
Form	Liquid
Concentration	0.5mg/ml
Purification	Affinity-chromatography
Suggested Dilutions	IHC 1:50-200

Anti-PD1 PDCD1 Rabbit Monoclonal Antibody (M00178-1) Images



Immunohistochemical analysis of paraffin-embedded human tonsil, using PD1 Antibody .

Submit a product review to Biocompare.com

Submit a review of this product to Biocompare.com to receive a \$20 Amazon.com giftcard! Your reviews help your fellow scientists make the right decisions. Thank you for your contribution.



Anti-PD1 PDCD1 Rabbit Monoclonal Antibody

For Research Use Only. Not for use in diagnostic procedures.