

Anti-PD-1 (CD279) Rabbit Monoclonal Antibody, Clone#RM309

Catalog Number: M00178-2

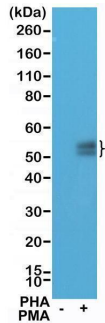
Overview

Product Name	Anti-PD-1 (CD279) Rabbit Monoclonal Antibody, Clone#RM309
Reactive Species	Human
Description	Boster Bio Anti-PD-1 (CD279) Rabbit Monoclonal Antibody, Clone#RM309 (Catalog # M00178-2). Tested in IHC, WB applications. This antibody reacts with Human.
Application	IHC, WB
Clonality	Monoclonal RM309
Formulation	50% Glycerol/PBS with 1% stabilizing protein and 0.09% sodium azide This antibody is supplied in a stabilized formulation. Compatibility with conjugation reactions depends on the chemistry of the conjugation method used. For conjugation methods that are not compatible with the stabilizing components present in this formulation, a carrier-free antibody format is required.
Storage Instructions	Store at -20°C for one year. Avoid repeated freeze-thaw cycles.
Host	Rabbit
Uniprot ID	Q15116

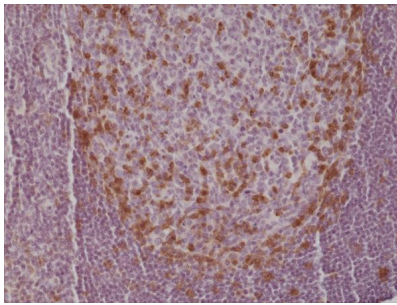
Technical Details

Immunogen	A peptide corresponding to the N-terminus of human PD-1
Cross Reactivity	This antibody reacts to human PD-1 (Programmed cell death protein 1) (CD279)
Isotype	Rabbit IgG
Form	Liquid
Concentration	0.5-1mg/ml, actual concentration vary by lot. Use suggested dilution ratio to decide dilution procedure.
Purification	Protein A affinity purified from an animal origin-free culture supernatant
Suggested Dilutions	Immunohistochemistry (IHC): 1:200-1:500 dilution WB: 1:100-1:200 dilution.

Anti-PD-1 (CD279) Rabbit Monoclonal Antibody, Clone#RM309 (M00178-2) Images



Western Blotting result Western Blot the lysates of Jurkat cells non-treated (-) or treated (+) with PHA and PMA, using anti-PD-1 (CD279) rabbit monoclonal antibody (Clone RM309) at a 1:100 dilution.



IHC result Immunohistochemical staining of formalin fixed and paraffin embedded human tonsil tissue section using anti-PD-1 rabbit monoclonal antibody (Clone RM309) at a 1:500 dilution.

Submit a product review to Biocompare.com

Submit a review of this product to Biocompare.com to receive a \$20 Amazon.com giftcard! Your reviews help your fellow scientists make the right decisions. Thank you for your contribution.



Anti-PD-1 (CD279) Rabbit Monoclonal Antibody, Clone#RM309

For Research Use Only. Not for use in diagnostic procedures.