

## Anti-PD-1 Pdc1 Monoclonal Antibody [7A11B1]

Catalog Number: M00178-3

### About PDCD1

Cell-mediated immune responses are initiated by T lymphocytes that are themselves stimulated by cognate peptides bound to MHC molecules on antigen-presenting cells (APC). T-cell activation is generally self-limited as activated T cells express receptors such as PD-1 (also known as PDCD-1) that mediate inhibitory signals from the APC. PD-1 can bind two different but related ligands, PDL-1 and PDL-2. Upon binding to either of these ligands, signals generated by PD-1 inhibit the activation of the immune response in the absence of "danger signals" such as LPS or other molecules associated with bacteria or other pathogens. Evidence for this is seen in PD1-null mice who exhibit hyperactivated immune systems and autoimmune diseases. Despite its predicted molecular weight, PD-1 often migrates at higher molecular weight in SDS-PAGE.

### Overview

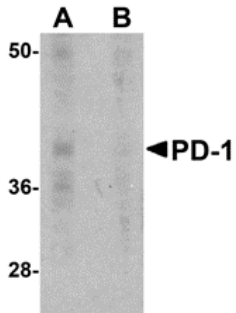
Product Name	Anti-PD-1 Pdc1 Monoclonal Antibody [7A11B1]
Reactive Species	Human, Mouse, Rat
Description	Boster Bio Anti-PD-1 Pdc1 Monoclonal Antibody [7A11B1] (Catalog # M00178-3). Tested in ELISA, WB, IHC-P, IF applications. This antibody reacts with Human, Mouse, Rat.
Application	ELISA, IF, IHC-P, WB
Clonality	Monoclonal Clone: 7A11B1
Formulation	PD-1 Monoclonal Antibody is supplied in PBS containing 0.02% sodium azide.
Storage Instructions	PD-1 monoclonal antibody can be stored at 4°C up to one year. Antibodies should not be exposed to prolonged high temperatures.
Host	Mouse
Uniprot ID	Q02242

### Technical Details

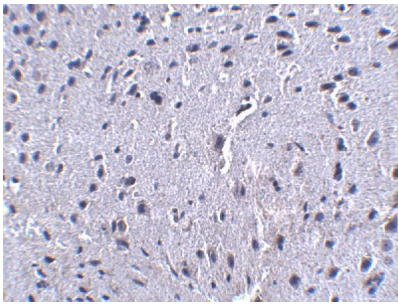
Immunogen	A ~150 amino acid recombinant protein from near the amino terminus of mouse PD-1.
Predicted Reactive Species	Mouse, Rat
Isotype	IgG1
Form	Liquid
Concentration	1 mg/mL
Purification	PD-1 Monoclonal Antibody is Protein A purified.
Suggested Dilutions	PD-1 antibody can be used for detection of PD-1 by Western blot at 1 ug/mL. Antibody can also be

used for immunohistochemistry starting at 2.5 ug/mL. For immunofluorescence start at 20 ug/mL. Antibody validated: Western Blot in mouse samples; Immunohistochemistry in human and mouse samples and Immunofluorescence in human and mouse samples. All other applications and species not yet tested. Optimal dilutions for each application should be determined by the researcher.

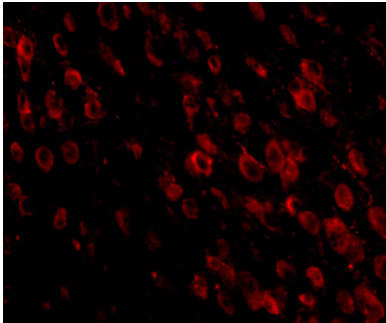
## Anti-PD-1 Pcd1 Monoclonal Antibody [7A11B1] (M00178-3) Images



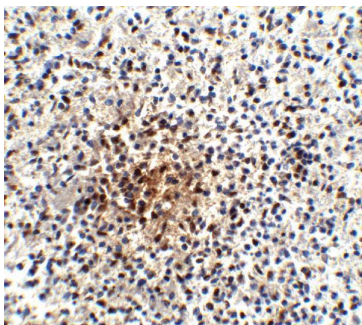
Western blot analysis of PD-1 in A-20 cell lysate with PD-1 antibody at 1 ug/mL in the (A) absence and (B) presence of blocking recombinant protein.



Immunohistochemistry of PD-1 in mouse brain tissue with PD-1 antibody at 2.5 ug/mL.

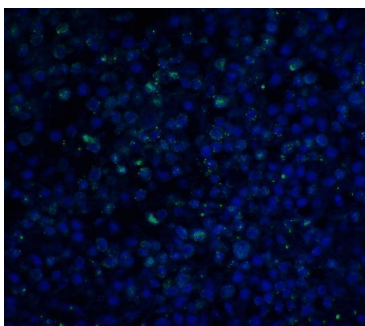


Immunofluorescence of PD-1 in mouse brain tissue with PD-1 antibody at 20 ug/mL.



Immunohistochemistry of PD-1 in human spleen tissue with PD-1 antibody at 25 ug/ml.

Immunofluorescence of PD-1 in human spleen tissue with PD-1 antibody at 20 ug/ml. Green: PD-1 Antibody [7A11B1] (M00178-3) Blue: DAPI staining



## Submit a product review to Biocompare.com

Submit a review of this product to Biocompare.com to receive a \$20 Amazon.com giftcard! Your reviews help your fellow scientists make the right decisions. Thank you for your contribution.



Anti-PD-1 Pdc1 Monoclonal Antibody [7A11B1]

For Research Use Only. Not for use in diagnostic procedures.