

Anti-PDCD1/PD-1/CD279 Reference Antibody (pembrolizumab)

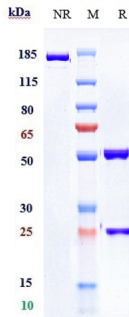
Catalog Number: M00178-6

Overview

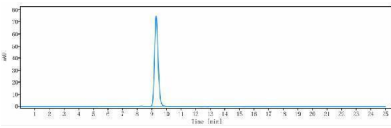
Product Name	Anti-PDCD1/PD-1/CD279 Reference Antibody (pembrolizumab)
Reactive Species	Cynomolgus monkey, Human
Description	Boster Bio Anti-PDCD1/PD-1/CD279 Reference Antibody (pembrolizumab) (Catalog # M00178-6). Tested in Flow Cytometry, ELISA, FTA. This antibody reacts with Cynomolgus monkey, Human. Endotoxin: < 0.013EU/ug,determined by LAL method. Expression system: CHO Cell
Application	ELISA, Flow Cytometry, Functional Assay, Kinetics
Clonality	Monoclonal
Storage Instructions	Maintain refrigerated at 2-8°C for up to 2 weeks. For long-term storage, aliquot and store at -20°C to avoid repeated freeze-thaw cycles.
Uniprot ID	Q15116

Technical Details

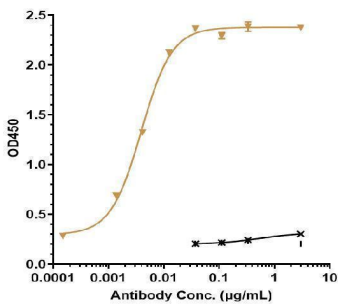
Anti-PDCD1/PD-1/CD279 Reference Antibody (pembrolizumab) (M00178-6) Images



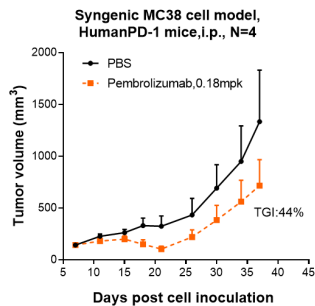
Anti-PDCD1/PD-1/CD279 Reference Antibody (pembrolizumab) on SDS-PAGE under reducing (R) condition. The gel was stained with Coomassie Blue. The purity of the protein is greater than 95%



The purity of Anti-PDCD1/PD-1/CD279 Reference Antibody (pembrolizumab) is more than 95%



Immobilized human PD-1 His at 2 µg/mL can bind Anti-PDCD1/PD-1/CD279 Reference Antibody (pembrolizumab)



Pembrolizumab inhibited the tumor growth of MC38 on human PD-1 mice. The result showed significant anti-tumor effects

Submit a product review to Biocompare.com

Submit a review of this product to Biocompare.com to receive a \$20 Amazon.com giftcard! Your reviews help your fellow scientists make the right decisions. Thank you for your contribution.



Anti-PDCD1/PD-1/CD279 Reference Antibody (pembrolizumab)

For Research Use Only. Not for use in diagnostic procedures.