

## Anti-PDCD1 / PD-1 / CD279 Reference Antibody (toripalimab)

Catalog Number: M00178-7

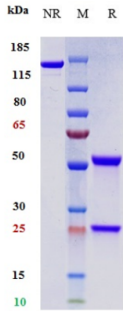
### Overview

|                      |   |
|----------------------|---|
| Product Name         | Anti-PDCD1 / PD-1 / CD279 Reference Antibody (toripalimab)  |
| Reactive Species     | Cynomolgus monkey, Human  |
| Description          | Boster Bio Anti-PDCD1 / PD-1 / CD279 Reference Antibody (toripalimab) (Catalog # M00178-7). Tested in Flow Cytometry, ELISA, FTA. This antibody reacts with Cynomolgus monkey, Human. Endotoxin: < 0.244EU/ug,determined by LAL method. Expression system: CHO Cell |
| Application          | ELISA, Flow Cytometry, Functional Assay, Kinetics   |
| Clonality            | Monoclonal  |
| Formulation          | Purified monoclonal antibody supplied in PBS, pH6.0, without preservative.This antibody is purified through a protein A column.   |
| Storage Instructions | Maintain refrigerated at 2-8°C for up to 2 weeks. For long-term storage, aliquot and store at -20°C to avoid repeated freeze-thaw cycles.   |
| Uniprot ID           | Q15116  |

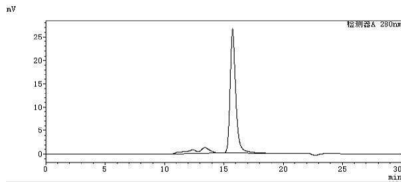
### Technical Details

|         |        |
|---------|--------|
| Isotype | IgG4   |
| Form    | Liquid |

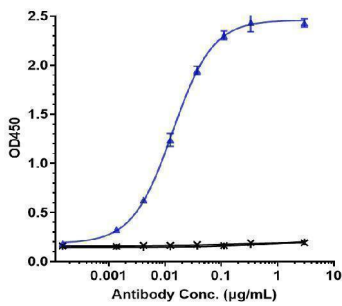
## Anti-PDCD1 / PD-1 / CD279 Reference Antibody (toripalimab) (M00178-7) Images



Anti-PDCD1/PD-1/CD279 Reference Antibody (toripalimab) on SDS-PAGE under reducing (R) condition. The gel was stained with Coomassie Blue. The purity of the protein is greater than 95%



The purity of Anti-PDCD1/PD-1/CD279 Reference Antibody (toripalimab) is more than 95%



Immobilized human PD 1(C 6His) at 2 µg/mL can bind Anti-PDCD1/PD-1/CD279 Reference Antibody (toripalimab)

### Submit a product review to Biocompare.com

Submit a review of this product to Biocompare.com to receive a \$20 Amazon.com giftcard! Your reviews help your fellow scientists make the right decisions. Thank you for your contribution.



Anti-PDCD1 / PD-1 / CD279 Reference Antibody (toripalimab)

For Research Use Only. Not for use in diagnostic procedures.