

Anti-CD56 NCAM1 Rabbit Monoclonal Antibody, Clone#RM315

Catalog Number: M00184-2

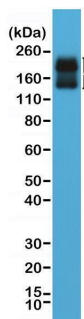
Overview

Product Name	Anti-CD56 NCAM1 Rabbit Monoclonal Antibody, Clone#RM315
Reactive Species	Human
Description	Boster Bio Anti-CD56 NCAM1 Rabbit Monoclonal Antibody, Clone#RM315 (Catalog # M00184-2). Tested in IHC, WB applications. This antibody reacts with Human.
Application	IHC, WB
Clonality	Monoclonal RM315
Formulation	50% Glycerol/PBS with 1% stabilizing protein and 0.09% sodium azide This antibody is supplied in a stabilized formulation. Compatibility with conjugation reactions depends on the chemistry of the conjugation method used. For conjugation methods that are not compatible with the stabilizing components present in this formulation, a carrier-free antibody format is required.
Storage Instructions	Store at -20°C for one year. Avoid repeated freeze-thaw cycles.
Host	Rabbit
Uniprot ID	P13591

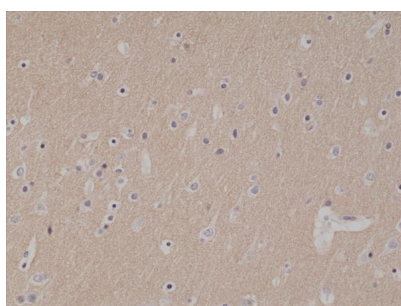
Technical Details

Immunogen	A peptide corresponding to the C-terminus of human CD56.
Cross Reactivity	This antibody reacts to human CD56 (NCAM1). It may also react to mouse CD56, as predicted by immunogen homology.
Isotype	Rabbit IgG
Form	Liquid
Concentration	0.5-1mg/ml, actual concentration vary by lot. Use suggested dilution ratio to decide dilution procedure.
Purification	Protein A affinity purified from an animal origin-free culture supernatant
Suggested Dilutions	Immunohistochemistry (IHC): 1:500-1:1000 dilution WB: 1:1000-1:2000 dilution.

Anti-CD56 NCAM1 Rabbit Monoclonal Antibody, Clone#RM315 (M00184-2) Images



Western Blotting result Western Blot of human brain tissue lysate using anti-CD56 rabbit monoclonal antibody (Clone RM315) at a 1:2000 dilution.



IHC result Immunohistochemical staining of formalin fixed and paraffin embedded human brain tissue section using anti-CD56 rabbit monoclonal antibody (Clone RM315) at a 1:1000 dilution.

Submit a product review to Biocompare.com

Submit a review of this product to Biocompare.com to receive a \$20 Amazon.com giftcard! Your reviews help your fellow scientists make the right decisions. Thank you for your contribution.



Anti-CD56 NCAM1 Rabbit Monoclonal Antibody, Clone#RM315

For Research Use Only. Not for use in diagnostic procedures.