

Anti-TRAF6 Rabbit Monoclonal Antibody

Catalog Number: M00185-1

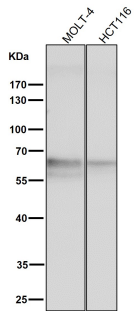
Overview

Product Name	Anti-TRAF6 Rabbit Monoclonal Antibody
Reactive Species	Human, Mouse, Rat
Description	Boster Bio Anti-TRAF6 Rabbit Monoclonal Antibody catalog # M00185-1. Tested in WB, IHC, Flow Cytometry applications. This antibody reacts with Human, Mouse, Rat.
Application	Flow Cytometry, IHC, WB
Clonality	Monoclonal BOF-20
Formulation	Rabbit IgG in stabilizing components, phosphate buffered saline, pH 7.4, 150mM NaCl, 0.02% sodium azide and 50% glycerol. *This antibody is supplied in a stabilized formulation. Compatibility with conjugation reactions depends on the chemistry of the conjugation method used. For conjugation methods that are not compatible with the stabilizing components present in this formulation, a carrier-free antibody format is required.
Storage Instructions	Store at -20°C for one year. For short term storage and frequent use, store at 4°C for up to one month. Avoid repeated freeze-thaw cycles.
Host	Rabbit
Uniprot ID	Q9Y4K3

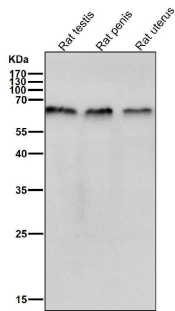
Technical Details

Immunogen	A synthesized peptide derived from human TRAF6
Isotype	Rabbit IgG
Form	Liquid
Concentration	0.5mg/ml
Purification	Affinity-chromatography
Suggested Dilutions	WB 1:500-1:2000 IHC 1:50-1:200 FC 1:50-1:200

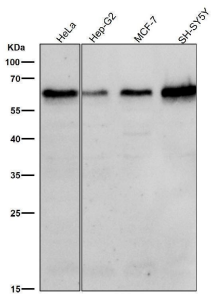
Anti-TRAF6 Rabbit Monoclonal Antibody (M00185-1) Images



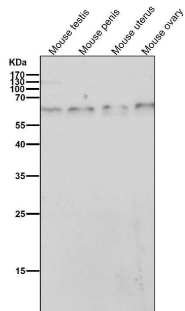
All lanes use the Antibody at 1:3K dilution for 1 hour at room temperature.



All lanes use the Antibody at 1:3K dilution for 1 hour at room temperature.

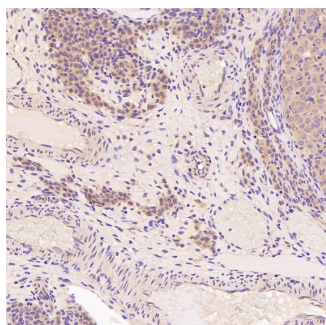
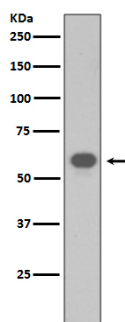


All lanes use the Antibody at 1:3K dilution for 1 hour at room temperature.

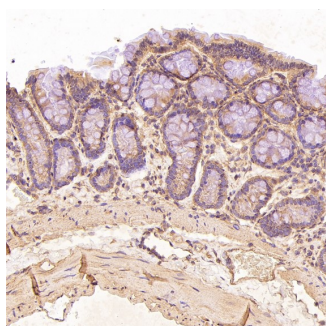


All lanes use the Antibody at 1:3K dilution for 1 hour at room temperature.

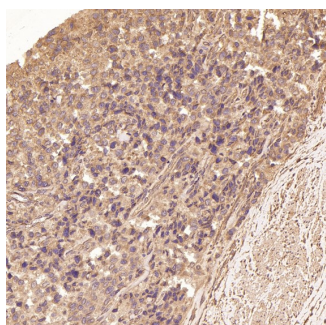
Western blot analysis of TRAF6 expression in NIH/3T3 cell lysate.



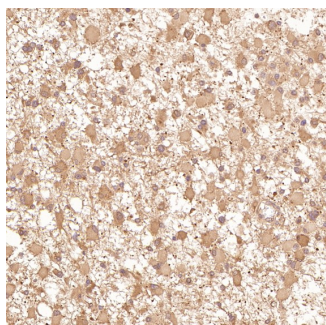
Immunohistochemical analysis of paraffin-embedded Rat ovary, using the Antibody at 1:50 dilution.



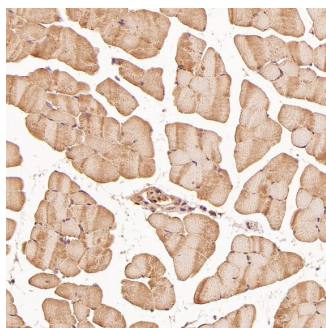
Immunohistochemical analysis of paraffin-embedded Rat stomach, using the Antibody at 1:50 dilution.



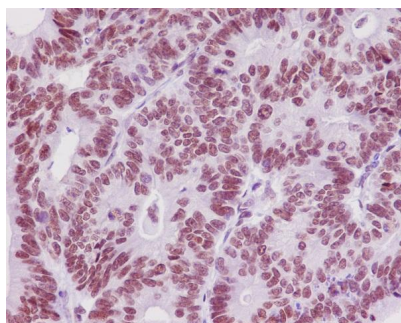
Immunohistochemical analysis of paraffin-embedded Human prostate cancer, using the Antibody at 1:50 dilution.



Immunohistochemical analysis of paraffin-embedded Human astrocytoma, using the Antibody at 1:50 dilution.



Immunohistochemical analysis of paraffin-embedded Mouse skeletal muscle - gastrocnemius, using the Antibody at 1:50 dilution.



Immunohistochemical analysis of paraffin-embedded human colon carcinoma, using TRAF6 Antibody.

3 Publications Citing This Product

1. PubMed ID: 32855700, Liu L, Liu F, Sun Z, Peng Z, You T, Yu Z. LncRNA NEAT1 promotes apoptosis and inflammation in LPS-induced sepsis models by targeting miR-590-3p. *Exp Ther Med*. 2020 Oct; 20(4):3290-3300. doi:10.3892/etm.2020.9079. Epub 2020 Jul 29. PMID:32855700; PMCID:PMC7444425.
2. PubMed ID: 25202335, Yuan Z, Zhang J, Yang C. Evid Based Complement Alternat Med. 2014;2014:620359. Doi: 10.1155/2014/620359. Epub 2014 Aug 17. Ligusticum Wallichii Extract Inhibited The Expression Of Il-1?? After Ami In Rats.
3. PubMed ID: 25269519, Liu Mw, Wang Yh, Qian Cy, Li H. *Int J Mol Med*. 2014 Dec;34(6):1492-504. Doi: 10.3892/ijmm.2014.1943. Epub 2014 Sep 23. Xuebijing Exerts Protective Effects On Lung Permeability Leakage And Lung Injury By Upregulating Toll-Interacting Protein Express...

Visit bosterbio.com/anti-traf6-rabbit-monoclonal-antibody-m00185-1-boster.html to see all 3 publications.

Submit a product review to Biocompare.com

Submit a review of this product to Biocompare.com to receive a \$20 Amazon.com giftcard! Your reviews help your fellow scientists make the right decisions. Thank you for your contribution.



Anti-TRAF6 Rabbit Monoclonal Antibody

For Research Use Only. Not for use in diagnostic procedures.