

## Anti-MUC1 / EMA / CD227 (Epithelial Marker) Monoclonal Antibody

Catalog Number: M00187

### About MUC1

This monoclonal antibody reacts with MUC1. The dominant epitope of This monoclonal antibody has not yet been determined. MUC1 is a large cell surface mucin glycoprotein expressed by most glandular and ductal epithelial cells and some hematopoietic cell lineages. It is expressed on most secretory epithelium, including mammary gland and some hematopoietic cells. It is expressed abundantly in lactating mammary glands and over expressed abundantly in 90% breast carcinomas and metastases. Transgenic MUC1 has been shown to associate with all four c-erbB receptors and localize with c-erbB1 (EGFR) in lactating glands. The MUC1 gene contains seven exons and produces several different alternatively spliced variants. The major expressed form of MUC1 uses all seven exons and is a type 1 transmembrane protein with a large extracellular tandem repeat domain. The tandem repeat domain is highly O glycosylated and alterations in glycosylation have been shown in epithelial cancer cells. Antibody to EMA is useful as a pan-epithelial marker for detecting early metastatic loci of carcinoma in bone marrow or liver.

### Overview

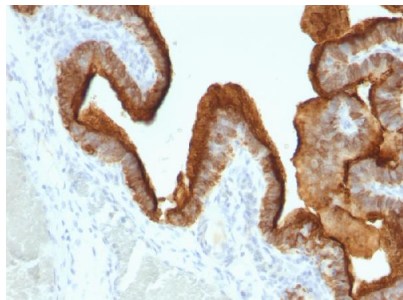
Product Name	Anti-MUC1 / EMA / CD227 (Epithelial Marker) Monoclonal Antibody
Reactive Species	Human, Mouse
Description	Boster Bio Anti-MUC1 / EMA / CD227 (Epithelial Marker) Monoclonal Antibody (Catalog # M00187). Tested in ELISA, Flow Cytometry, IF, IHC applications. This antibody reacts with Human, Mouse.
Conjugate	Biotin
Application	ELISA, Flow Cytometry, IF, IHC
Clonality	Monoclonal Clone: SPM493
Formulation	Prepared in 10mM PBS with 0.05% BSA & 0.05% azide. Also available WITHOUT BSA & azide at 1.0mg/ml.
Storage Instructions	Antibody with azide - store at 2 to 8°C. Antibody without azide - store at -20 to -80°C. Antibody is stable for 24 months. Non-hazardous. No MSDS required.
Host	Mouse
Uniprot ID	P15941

### Technical Details

Immunogen	Breast Cancer Cell line ZR75-1
Predicted Reactive Species	Chimpanzee
Isotype	IgG1, kappa
Form	Liquid

Concentration	Purified antibody with BSA and azide at 200ug/ml
Purification	200ug/ml of antibody purified from Bioreactor Concentrate by Protein A/G.
Suggested Dilutions	<p>Dilute the sample so that the expected range of concentrations fall within the detection range of this kit.</p> <p>If the expected range of concentration is unknown, a pilot test should be conducted to decide the optimal dilution ratio for your samples.</p> <p>Some PubMed article(s) citing the expression level of this target are as follows:</p> <p>Boster Bio's internal QC testing used:</p> <p>ELISA (For coating use Ab at 2-5ug/ml, order Ab without BSA) (Very good capturing Ab)</p> <p>Flow Cytometry (0.25-0.5ug/million cells)</p> <p>Immunofluorescence (1-2ug/ml)</p> <p>Immunohistochemistry (Formalin-fixed) (1-2ug/ml for 30 minutes at RT)(Staining of formalin-fixed tissues requires heating tissue sections in 10mM Tris with 1mM EDTA, pH 9.0, for 45 min at 95&amp;degC followed by cooling at RT for 20 minutes)</p> <p>Optimal dilution for a specific application should be determined.</p>

## Anti-MUC1 / EMA / CD227 (Epithelial Marker) Monoclonal Antibody (M00187) Images



Formalin-fixed, paraffin-embedded human Ovarian Carcinoma stained with Anti-MUC-1 / CA15-3 / EMA Mouse Monoclonal Antibody (SPM493).

## 2 Publications Citing This Product

1. PubMed ID: 27895759, Globose, cystic olfactory ensheathing cell tumor: A case report and literature review
2. PubMed ID: 23384043, Zhang J, Chen X, Shi G, Xie X, Liu H, Zhang X, Lai Y, Zuo Y, Chen Z, Liu S, Wang H. J Ovarian Res. 2013 Feb 6;6(1):9. Doi: 10.1186/1757-2215-6-9. Establishment Of A New Representative Model Of Human Ovarian Cancer In Mice.

Visit [bosterbio.com/anti-muc1-ema-cd227-epithelial-marker-antibody-m00187-boster.html](http://bosterbio.com/anti-muc1-ema-cd227-epithelial-marker-antibody-m00187-boster.html) to see all 2 publications.

## Submit a product review to Biocompare.com

Submit a review of this product to Biocompare.com to receive a \$20 Amazon.com giftcard! Your reviews help your fellow scientists make the right decisions. Thank you for your contribution.



Anti-MUC1 / EMA / CD227 (Epithelial Marker) Monoclonal Antibody