

## Anti-HLA-A Antibody (Monoclonal, 34H66)

Catalog Number: M00194-4

### About HLA-A

HLA-A, namely HLA A, is a group of human leukocyte antigens (HLA) that are coded for by the HLA-A locus, which is located at human chromosome 6p21.3. HLA is simply the major histocompatibility complex (MHC) specific to humans. HLA-A is one of three major types of human MHC class I cell surface receptors. The others are HLA-B and HLA-C. And it is critical to the cytotoxic t-cell controlled immune response to viruses and other intracellular pathogens. Because each HLA-A gene has a high affinity for slightly different peptides, certain HLA-As are associated with increased risk, more rapid progression, and/or increased severity of many diseases. For similar reasons, HLA-A matching is essential to successful tissue transplants.

### Overview

Product Name	Anti-HLA-A Antibody (Monoclonal, 34H66)
Reactive Species	Human, Mouse, Rat
Description	Boster Bio Anti-HLA-A Antibody (Monoclonal, 34H66) catalog # M00194-4. Tested in WB, IHC, ICC/IF applications. This antibody reacts with Human, Mouse, Rat.
Application	IF, IHC, ICC, WB
Clonality	Monoclonal 34H66
Formulation	Rabbit IgG in stabilizing components, phosphate buffered saline, pH 7.4, 150mM NaCl, 0.02% sodium azide and 50% glycerol. This antibody is supplied in a stabilized formulation. Compatibility with conjugation reactions depends on the chemistry of the conjugation method used. For conjugation methods that are not compatible with the stabilizing components present in this formulation, a carrier-free antibody format is required.
Storage Instructions	Store at -20°C for one year. For short term storage and frequent use, store at 4°C for up to one month. Avoid repeated freeze-thaw cycles.
Host	Rabbit
Uniprot ID	P04439

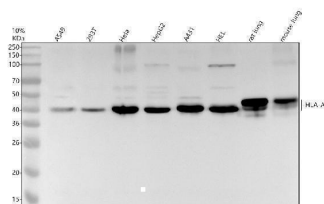
### Technical Details

Immunogen	Recombinant protein within human HLA-B aa 112-307.
Form	Liquid
Concentration	500 ug/ml
Purification	Protein A affinity purified.

Suggested Dilutions

Western blot, 1:500-2000  
Immunohistochemistry, 1:50-200  
Immunocytochemistry/Immunofluorescence, 1:50-200

## Anti-HLA-A Antibody (Monoclonal, 34H66) (M00194-4) Images



Western blot analysis of HLA-A using anti-HLA-A antibody (M00194-4). Electrophoresis was performed on a 10% SDS-PAGE gel at 80V (Stacking gel) / 120V (Resolving gel) for 2 hours. The sample well of each lane was loaded with 30 ug of sample under reducing conditions. Lane 1: human A549 whole cell lysates, Lane 2: human 293T whole cell lysates, Lane 3: human Hela whole cell lysates, Lane 4: human HepG2 whole cell lysates, Lane 5: human A431 whole cell lysates, Lane 6: human HEL whole cell lysates, Lane 7: rat lung tissue lysates, Lane 8: mouse lung tissue lysates. After electrophoresis, proteins were transferred to a nitrocellulose membrane at 150 mA for 50-90 minutes. Blocked the membrane with 5% non-fat milk/TBS for 1.5 hour at RT. The membrane was incubated with rabbit anti-HLA-A antigen affinity purified monoclonal antibody (M00194-4) at 1:500 overnight at 4°C, then washed with TBS-0.1%Tween 3 times with 5 minutes each and probed with a goat anti-rabbit IgG-HRP secondary antibody at a dilution of 1:5000 for 1.5 hour at RT. The signal is developed using an ECL Plus Western Blotting Substrate (Catalog # AR1196-200) with Tanon 5200 system. A specific band was detected for HLA-A at approximately 41,44 kDa. The expected band size for HLA-A is at 41 kDa.

### Submit a product review to [Biocompare.com](https://www.biocompare.com)

Submit a review of this product to [Biocompare.com](https://www.biocompare.com) to receive a \$20 Amazon.com giftcard! Your reviews help your fellow scientists make the right decisions. Thank you for your contribution.



Anti-HLA-A Antibody (Monoclonal, 34H66)

For Research Use Only. Not for use in diagnostic procedures.