

Anti-FGFR3 Mouse Monoclonal Antibody [Clone ID: OTI1B10]

Catalog Number: M00200-2

Overview

Product Name	Anti-FGFR3 Mouse Monoclonal Antibody [Clone ID: OTI1B10]
Reactive Species	Human
Description	Boster Bio FGFR3 mouse monoclonal antibody, clone OTI1B10 (formerly 1B10). Catalog# M00200-2. Tested in IF, IHC, WB. This antibody reacts with Human.
Conjugate	Unconjugated
Application	IF, IHC, WB
Clonality	Monoclonal OTI1B10
Formulation	PBS (pH 7.3) containing 1% stabilizing protein, 50% glycerol and 0.02% sodium azide. This antibody is supplied in a stabilized formulation. Compatibility with conjugation reactions depends on the chemistry of the conjugation method used. For conjugation methods that are not compatible with the stabilizing components present in this formulation, a carrier-free antibody format is required.
Storage Instructions	Store at -20°C for one year. For short term storage and frequent use, store at 4°C for up to one month. Avoid repeated freeze-thaw cycles.
Host	Mouse
Uniprot ID	P22607

Technical Details

Immunogen	Human recombinant protein fragment corresponding to amino acids 23-375 of human FGFR3 (NP_000133) produced in SF9 cell.
Isotype	IgG1
Concentration	1 mg/ml
Purification	Purified from mouse ascites fluids or tissue culture supernatant by affinity chromatography (protein A/G)
Suggested Dilutions	WB 1:2000 IHC 1:150

Anti-FGFR3 Mouse Monoclonal Antibody [Clone ID: OTI1B10] (M00200-2) Images

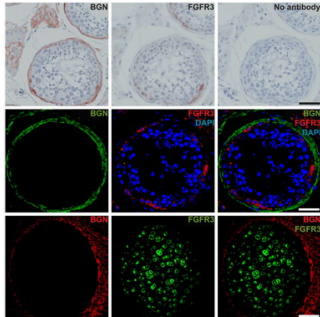
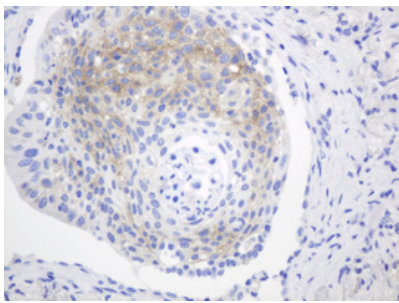
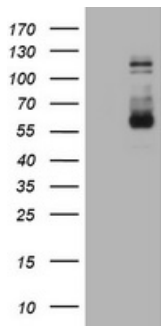


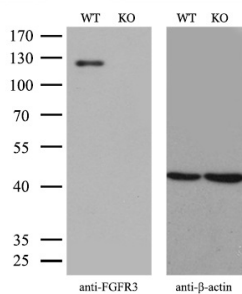
Figure from citation: Immunohistochemical and Immunofluorescence staining with anti-BGN and anti-FGFR3 of serial sections of adult human testis tissue with full spermatogenesis and fetal bone sample (gestational week 10). Scale bar is 50 μ m for all images. Dilution: 1:200



Immunohistochemical staining of paraffin-embedded Carcinoma of Human lung tissue using anti-FGFR3 mouse monoclonal antibody. (Heat-induced epitope retrieval by 10mM citric buffer)



HEK293T cells were transfected with the pCMV6-ENTRY control (Left lane) or pCMV6-ENTRY FGFR3 (Right lane) cDNA for 48 hrs and lysed. Equivalent amounts of cell lysates (5 μ g per lane) were separated by SDS-PAGE and immunoblotted with anti-FGFR3.



Equivalent amounts of cell lysates (10 μ g per lane) of wild-type 293T cells (WT) and FGFR3-Knockout 293T cells (KO) were separated by SDS-PAGE and immunoblotted with anti-FGFR3 monoclonal antibody M00200-2. Then the blotted membrane was stripped and re-probed with anti- β -actin antibody as a loading control (1:500).

Submit a product review to [Biocompare.com](https://www.biocompare.com)

Submit a review of this product to [Biocompare.com](https://www.biocompare.com) to receive a \$20 Amazon.com giftcard! Your reviews help your fellow scientists make the right decisions. Thank you for your contribution.



For Research Use Only. Not for use in diagnostic procedures.