

Anti-CDK1/Cdc2 Rabbit Monoclonal Antibody

Catalog Number: M00209-1

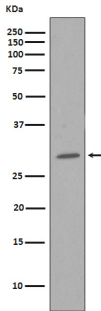
Overview

Product Name	Anti-CDK1/Cdc2 Rabbit Monoclonal Antibody
Reactive Species	Human
Description	Boster Bio Anti-CDK1/Cdc2 Rabbit Monoclonal Antibody catalog # M00209-1. Tested in WB, IP applications. This antibody reacts with Human.
Application	IP, WB
Clonality	Monoclonal AAD-3
Formulation	Rabbit IgG in stabilizing components, phosphate buffered saline, pH 7.4, 150mM NaCl, 0.02% sodium azide and 50% glycerol. *This antibody is supplied in a stabilized formulation. Compatibility with conjugation reactions depends on the chemistry of the conjugation method used. For conjugation methods that are not compatible with the stabilizing components present in this formulation, a carrier-free antibody format is required.
Storage Instructions	Store at -20°C for one year. For short term storage and frequent use, store at 4°C for up to one month. Avoid repeated freeze-thaw cycles.
Host	Rabbit
Uniprot ID	P06493

Technical Details

Immunogen	A synthesized peptide derived from human CDK1
Isotype	Rabbit IgG
Form	Liquid
Concentration	0.5mg/ml
Purification	Affinity-chromatography
Suggested Dilutions	WB 1:500-1:2000 IP 1:50

Anti-CDK1/Cdc2 Rabbit Monoclonal Antibody (M00209-1) Images



Western blot analysis of CDK1 in HeLa cell lysate.

3 Publications Citing This Product

1. PubMed ID: 30159255, Coxsackievirus A6 induces cell cycle arrest in G0/G1 phase for viral production
2. PubMed ID: 28229049, Human enterovirus 68 interferes with the host cell cycle to facilitate viral production
3. PubMed ID: 27109908, A novel cell cycle blocker extracted from *Stellera chamaejasme* L. inhibits the proliferation of hepatocarcinoma cells

Visit bosterbio.com/anti-cdk1-rabbit-monoclonal-antibody-m00209-1-boster.html to see all 3 publications.

Submit a product review to Biocompare.com

Submit a review of this product to Biocompare.com to receive a \$20 Amazon.com giftcard! Your reviews help your fellow scientists make the right decisions. Thank you for your contribution.



Anti-CDK1/Cdc2 Rabbit Monoclonal Antibody

For Research Use Only. Not for use in diagnostic procedures.